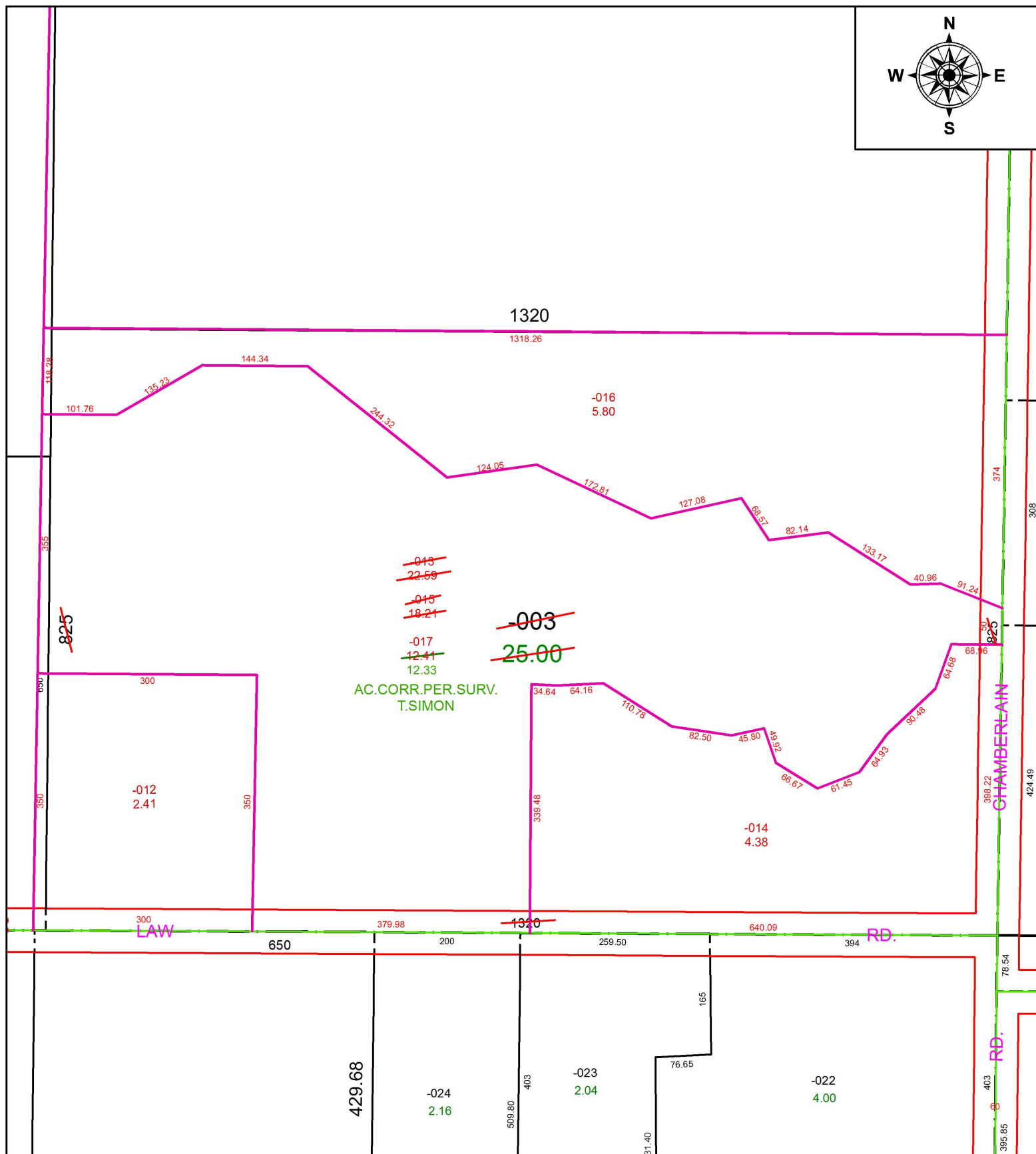


PARENT PARCEL: 16-00-061-000-003

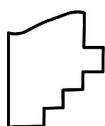
CHILD PARCEL: 16-00-061-000-012 THRU -017

STARTING POINT: INTERSECTION OF C/L OF LAW RD. AND C/L OF CHAMBERLAIN RD.

16-03574



AC. CORR. PER. SURV.
T. SIMON



SPLITS/DEEDS PROCESSED
LORAIN COUNTY TAX MAP DEPARTMENT
226 MIDDLE AVE. ELYRIA, OH

SURVEYED BY: THOMAS A. SIMON

CLOSURE: 1: 2147483648

MAP PAGE(S): 16-E

APPROVED BY: RRM DATE: 9-29-16

SCALE: 1" = 175 PRIOR INSTRUMENT: 20150542766