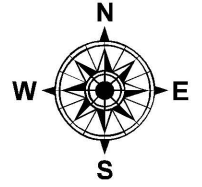


PARENT PARCEL: 11-00-100-102-011 & 012

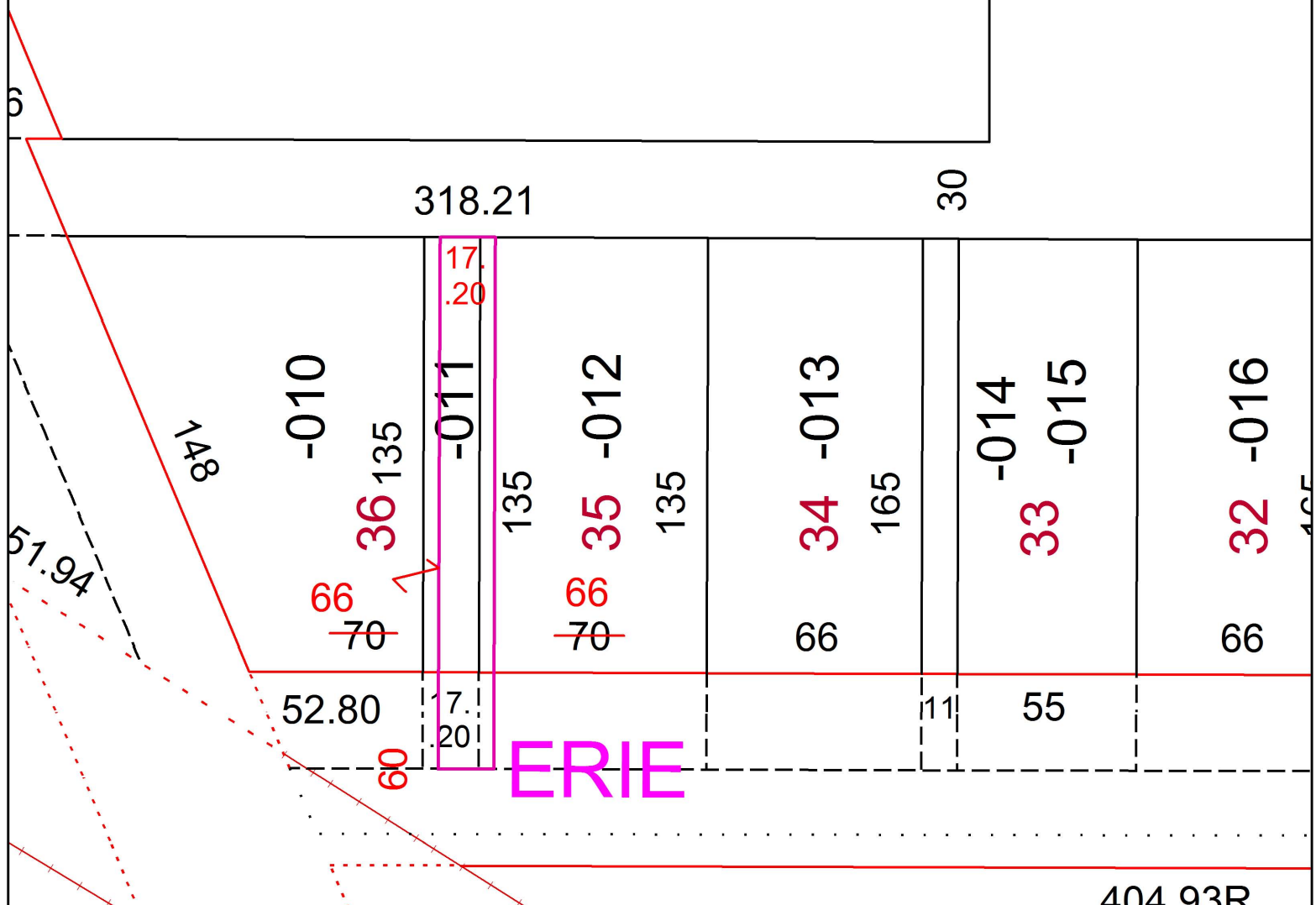
CHILD PARCEL: XX-XX-XXX-XXX-XXX

STARTING POINT: BEING ALL OF S/L 35 (66' PLAT) & WESTERLY 17.20' OF S/L 36

16-03574-C



# MAP & FRONTAGE CORR.



**SPLITS/DEEDS PROCESSED**  
 LORAIN COUNTY TAX MAP DEPARTMENT  
 226 MIDDLE AVE. ELYRIA, OH

SURVEYED BY: NA  
 CLOSURE: PER PLAT VOL. 1 PG. 24  
 MAP PAGE(S): 11-00-100  
 APPROVED BY: TJS DATE: 12/21/16  
 SCALE: 1" = 50' PRIOR INSTRUMENT: 2016-0577680