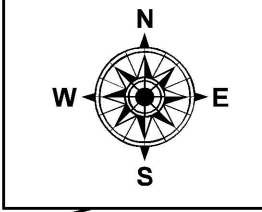
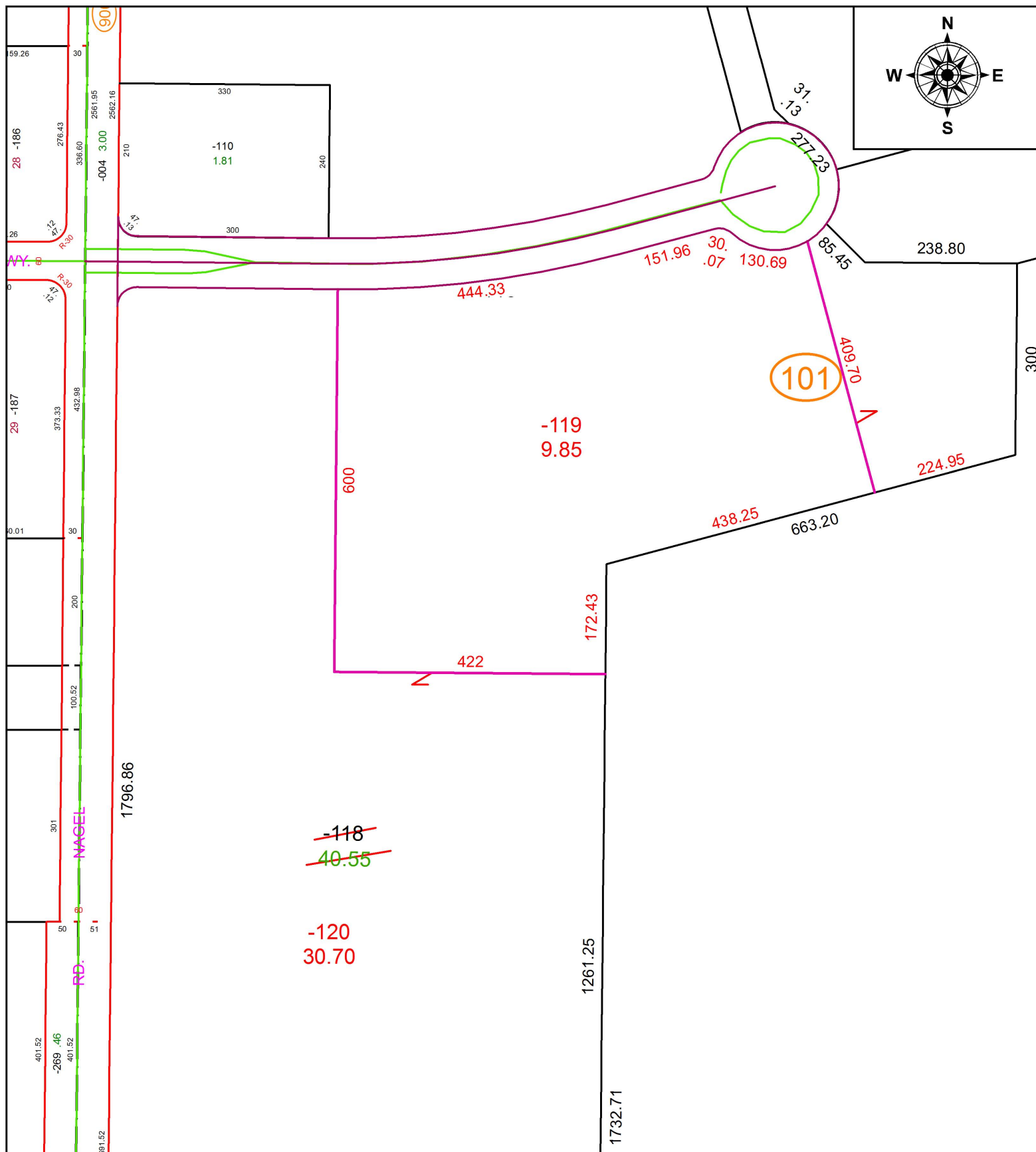


PARENT PARCEL: 04-00-028-101-118

CHILD PARCEL: 04-00-028-101-119, -120

STARTING POINT: SOUTHWEST CORNER OF SECTION 28

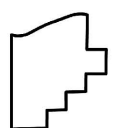
16-03572



101

~~-118~~  
40.55

-120  
30.70



**SPLITS/DEEDS PROCESSED**  
 LORAIN COUNTY TAX MAP DEPARTMENT  
 226 MIDDLE AVE. ELYRIA, OH

SURVEYED BY: PETER D. ZWICK  
 CLOSURE: 1: 178,112  
 MAP PAGE(S): 4-00-028  
 APPROVED BY: RRM DATE: 2-25-16  
 SCALE: 1" = 200 PRIOR INSTRUMENT: 20130482288