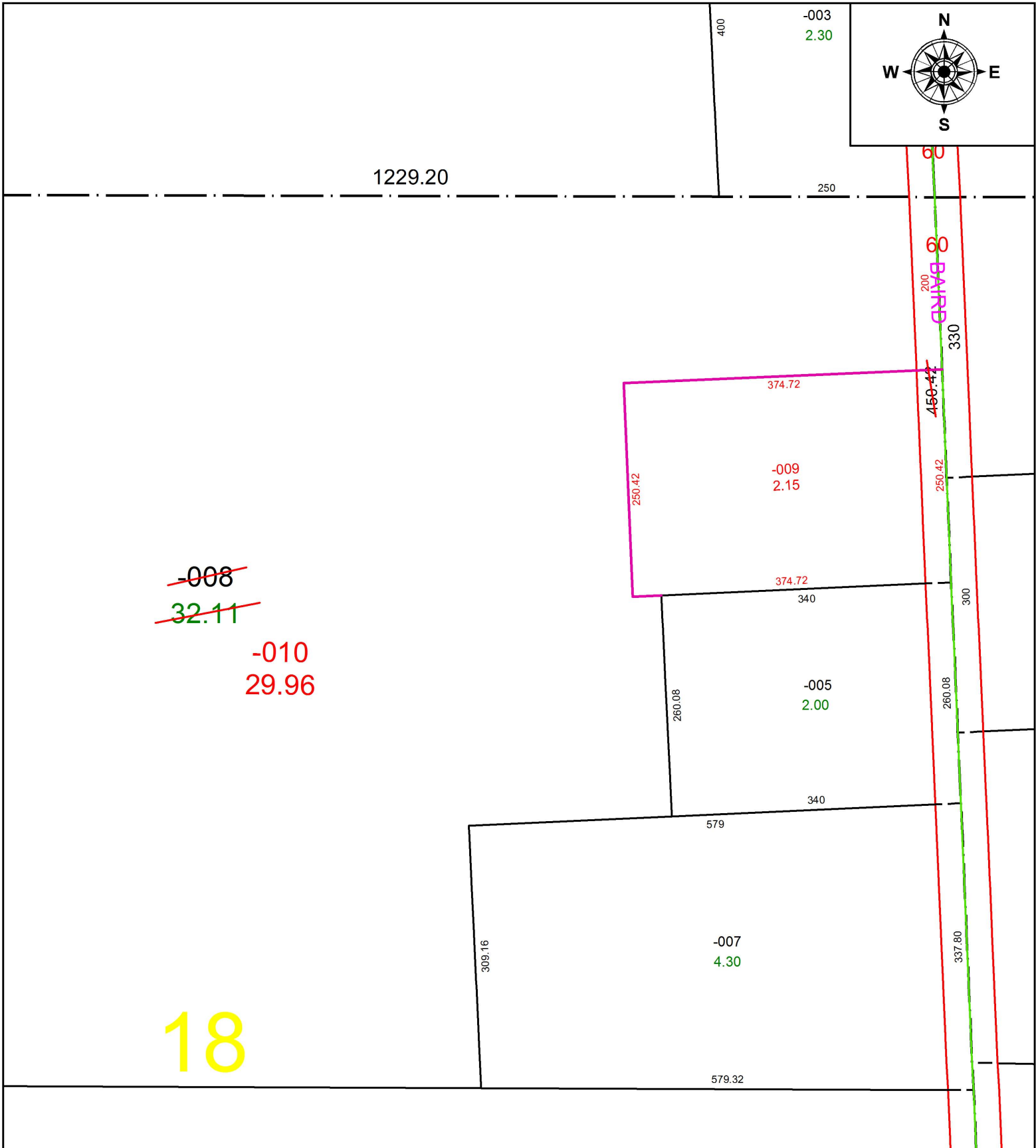
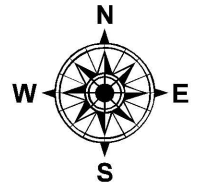


PARENT PARCEL: 08-13-018-000-008

CHILD PARCEL: 08-13-018-000-009, -010

STARTING POINT: NORTHEAST CORNER OF O.L.18 TR.13

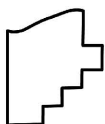
16-03569



~~-008~~  
~~32.11~~

-010  
29.96

18



**SPLITS/DEEDS PROCESSED**  
LORAIN COUNTY TAX MAP DEPARTMENT  
226 MIDDLE AVE. ELYRIA, OH

SURVEYED BY: THOMAS A. SIMON

CLOSURE: 1: 2147483648

MAP PAGE(S): 8-E

APPROVED BY: RRM DATE: 9-22-16

SCALE: 1" = 150 PRIOR INSTRUMENT: 20130461526