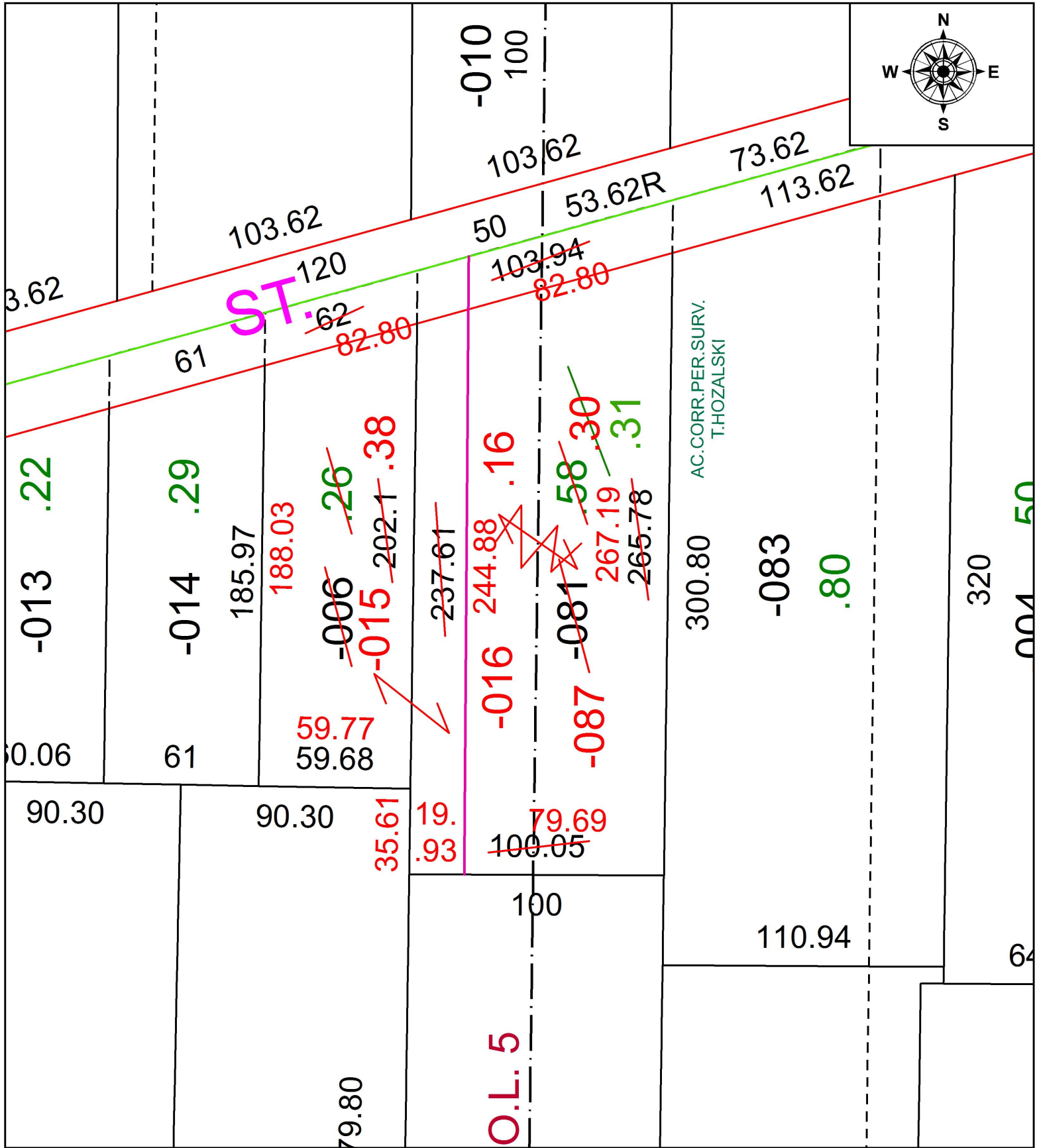


PARENT PARCEL: 09-00-094-103-006, 09-00-095-103-081

CHILD PARCEL: 09-00-094-103-015, -016, 09-00-095-103-087

STARTING POINT: INTERSECTION OF C/L OF W. LINCOLN ST. AND WEST LINE OF OUTLOT 5

16-03565



SPLITS/DEEDS PROCESSED
LORAIN COUNTY TAX MAP DEPARTMENT
226 MIDDLE AVE. ELYRIA, OH

SURVEYED BY: TIMOTHY D. HOZALSKI

CLOSURE: 1: 255,372

MAP PAGE(S): 9-00-094

APPROVED BY: RRM DATE: 9-21-16

SCALE: 1" = 50 PRIOR INSTRUMENT: 20140529135