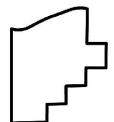
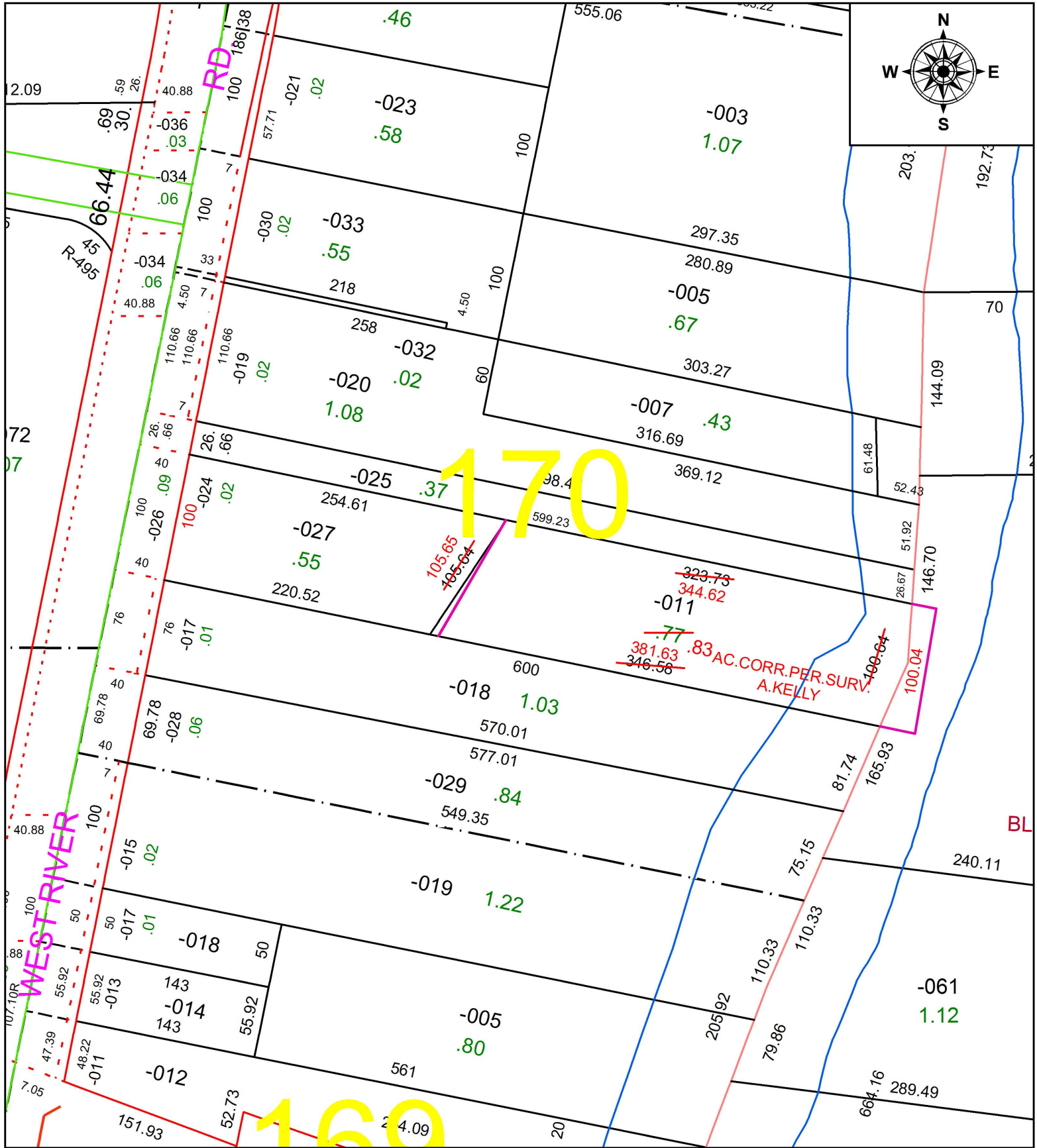


PARENT PARCEL: 06-24-170-000-011, -027

CHILD PARCEL: XX-XX-XXX-XXX-XXX

STARTING POINT: POINT OF TANGENCY IN C/L OF WEST RIVER RD.

16-03560-D



**SPLITS/DEEDS PROCESSED**  
 LORAIN COUNTY TAX MAP DEPARTMENT  
 226 MIDDLE AVE. ELYRIA, OH

SURVEYED BY: AMY M. KELLY  
 CLOSURE: 1: 692,378  
 MAP PAGE(S): 6-66  
 APPROVED BY: RRM DATE: 11-23-16  
 SCALE: 1" = 100 PRIOR INSTRUMENT: OR 1381/881