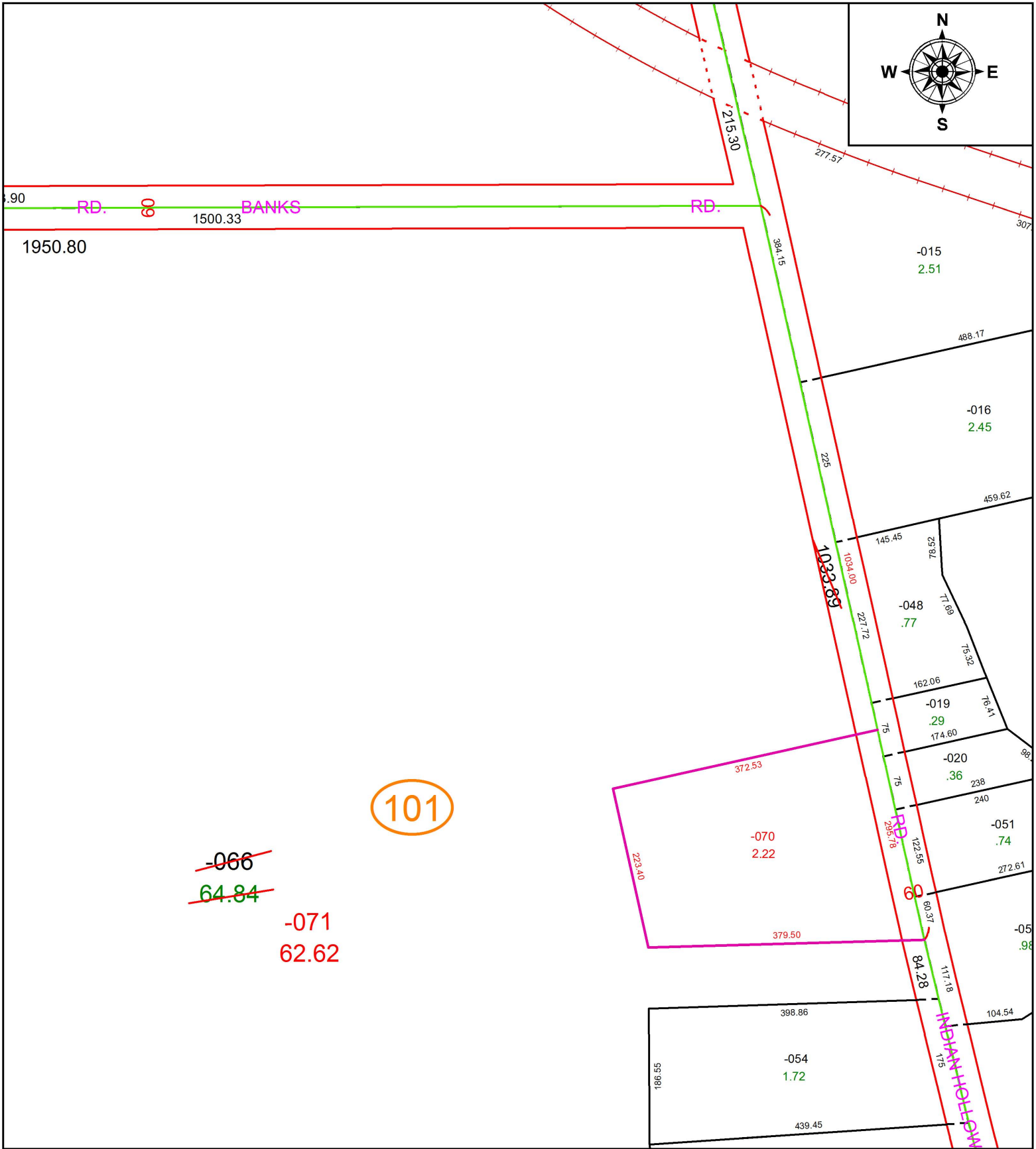


PARENT PARCEL: 10-00-025-101-066

CHILD PARCEL: 10-00-025-101-070, -071

STARTING POINT: INTERSECTION OF C/L OF INDIAN HOLLOW RD. AND C/L OF BANKS RD.

16-03558



**SPLITS/DEEDS PROCESSED**  
LORAIN COUNTY TAX MAP DEPARTMENT  
226 MIDDLE AVE. ELYRIA, OH

SURVEYED BY: THOMAS A. SIMON

CLOSURE: 1: 266,165

MAP PAGE(S): 10-00-025

APPROVED BY: RRM DATE: 8-19-16

SCALE: 1" = 175 PRIOR INSTRUMENT: 20060173261