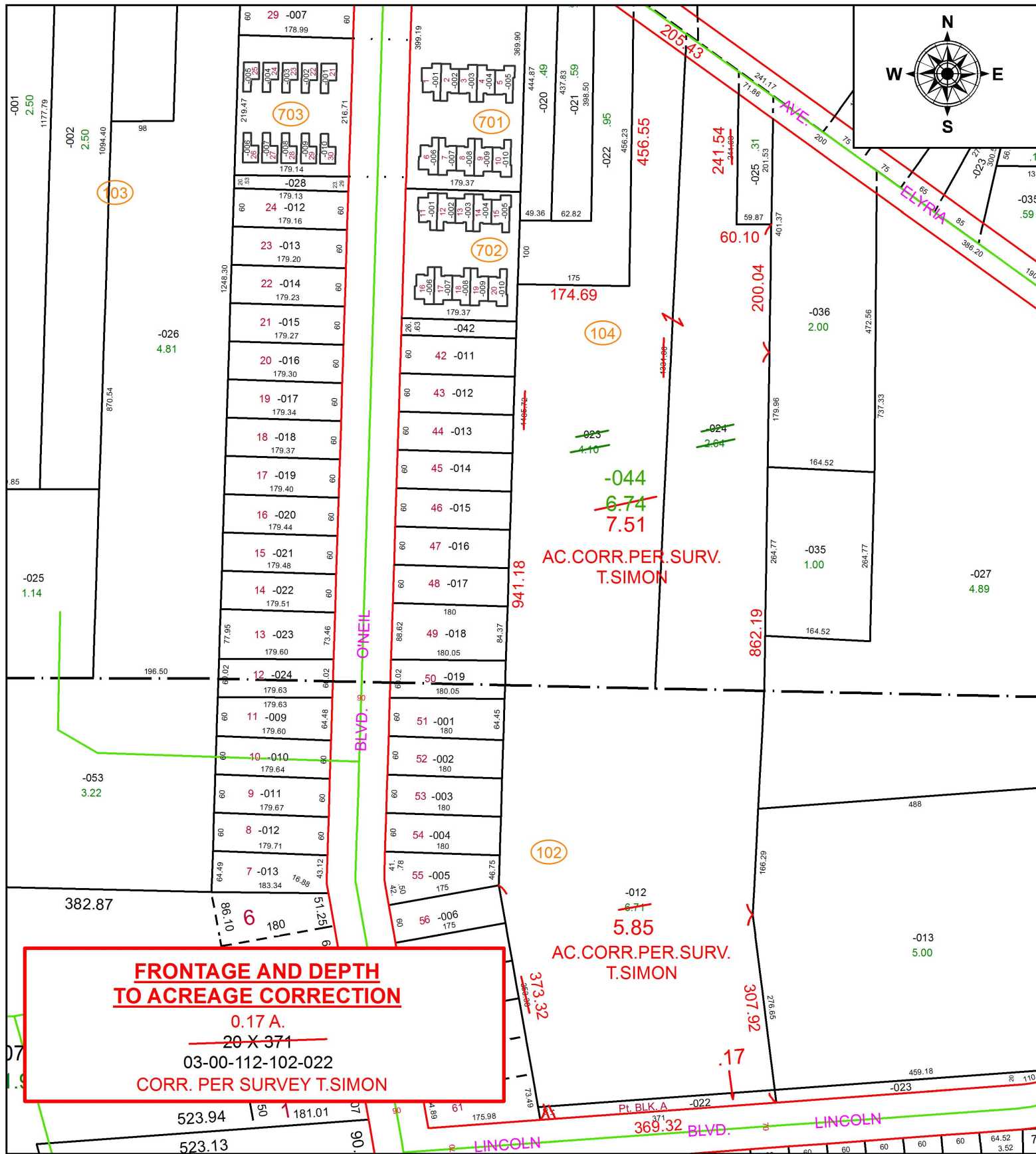


PARENT PARCEL: 03-00-107-104-023, -024, 03-00-112-102-012, -022

CHILD PARCEL: 03-00-107-104-044, 03-00-112-102-012, -022

STARTING POINT: INTERSECTION OF C/L OF DUNTON RD. AND C/L OF ELYRIA AVE.

16-03549

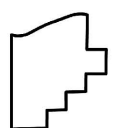


**FRONTAGE AND DEPTH
TO ACREAGE CORRECTION**

0.17 A.
~~20 X 371~~
 03-00-112-102-022
 CORR. PER SURVEY T.SIMON

AC.CORR.PER.SURV.
T.SIMON

AC.CORR.PER.SURV.
T.SIMON



SPLITS/DEEDS PROCESSED
 LORAIN COUNTY TAX MAP DEPARTMENT
 226 MIDDLE AVE. ELYRIA, OH

SURVEYED BY: THOMAS A. SIMON
 CLOSURE: 1: 1,878,625
 MAP PAGE(S): 3-00-107
 APPROVED BY: RRM DATE: 8-22-16
 SCALE: 1" = 200 PRIOR INSTRUMENT: 20140508239