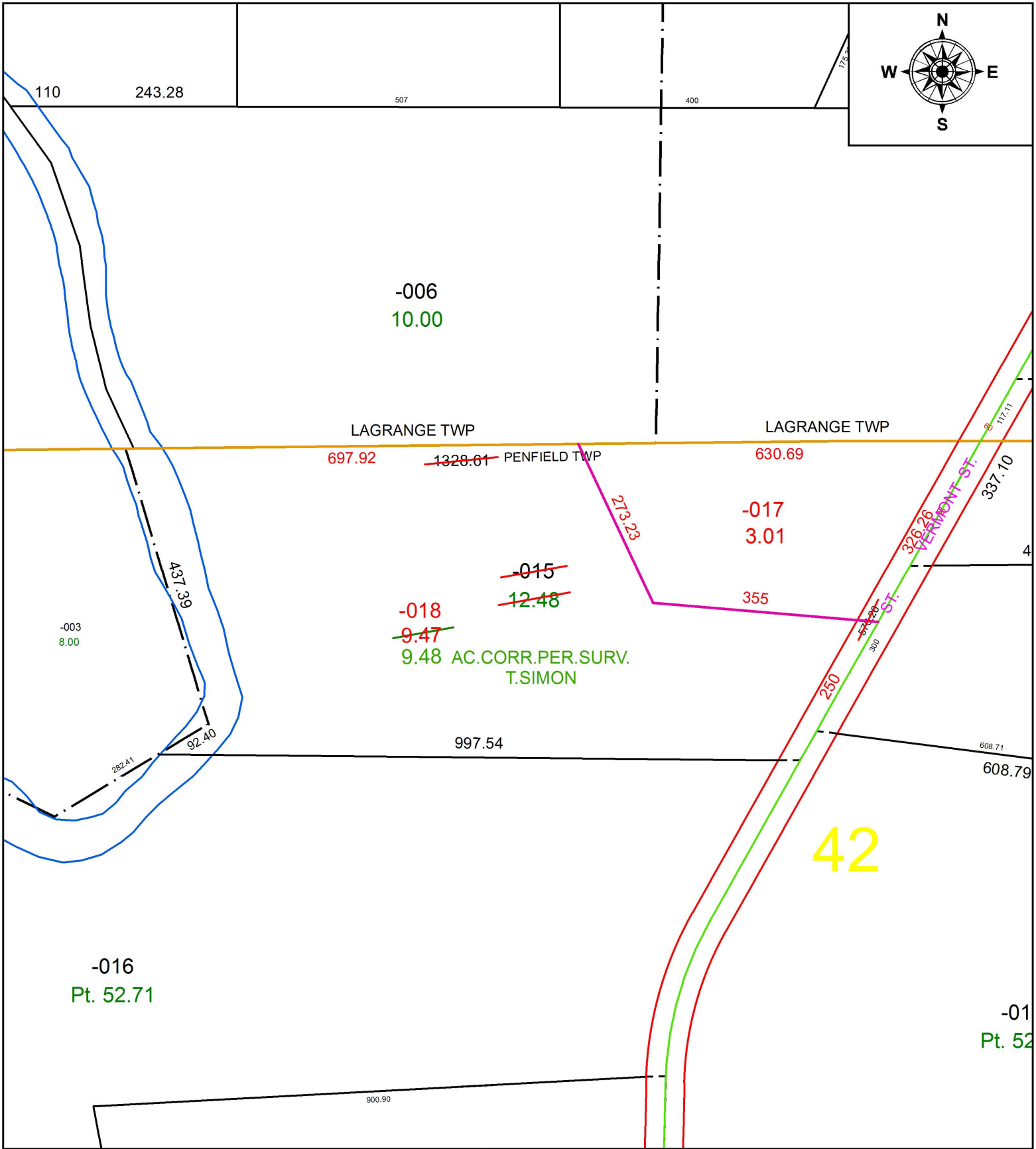


PARENT PARCEL: 19-06-042-000-015

CHILD PARCEL: 19-06-042-000-017, -018

STARTING POINT: INTERSECTION OF C/L OF VERMONT ST. AND C/L OF SHORT RD.

16-03547



**SPLITS/DEEDS PROCESSED**  
LORAIN COUNTY TAX MAP DEPARTMENT  
226 MIDDLE AVE. ELYRIA, OH

SURVEYED BY: THOMAS A. SIMON  
CLOSURE: 1: 495,937  
MAP PAGE(S): 19-D  
APPROVED BY: RRM DATE: 8-1-16  
SCALE: 1" = 200 PRIOR INSTRUMENT: 20140504985