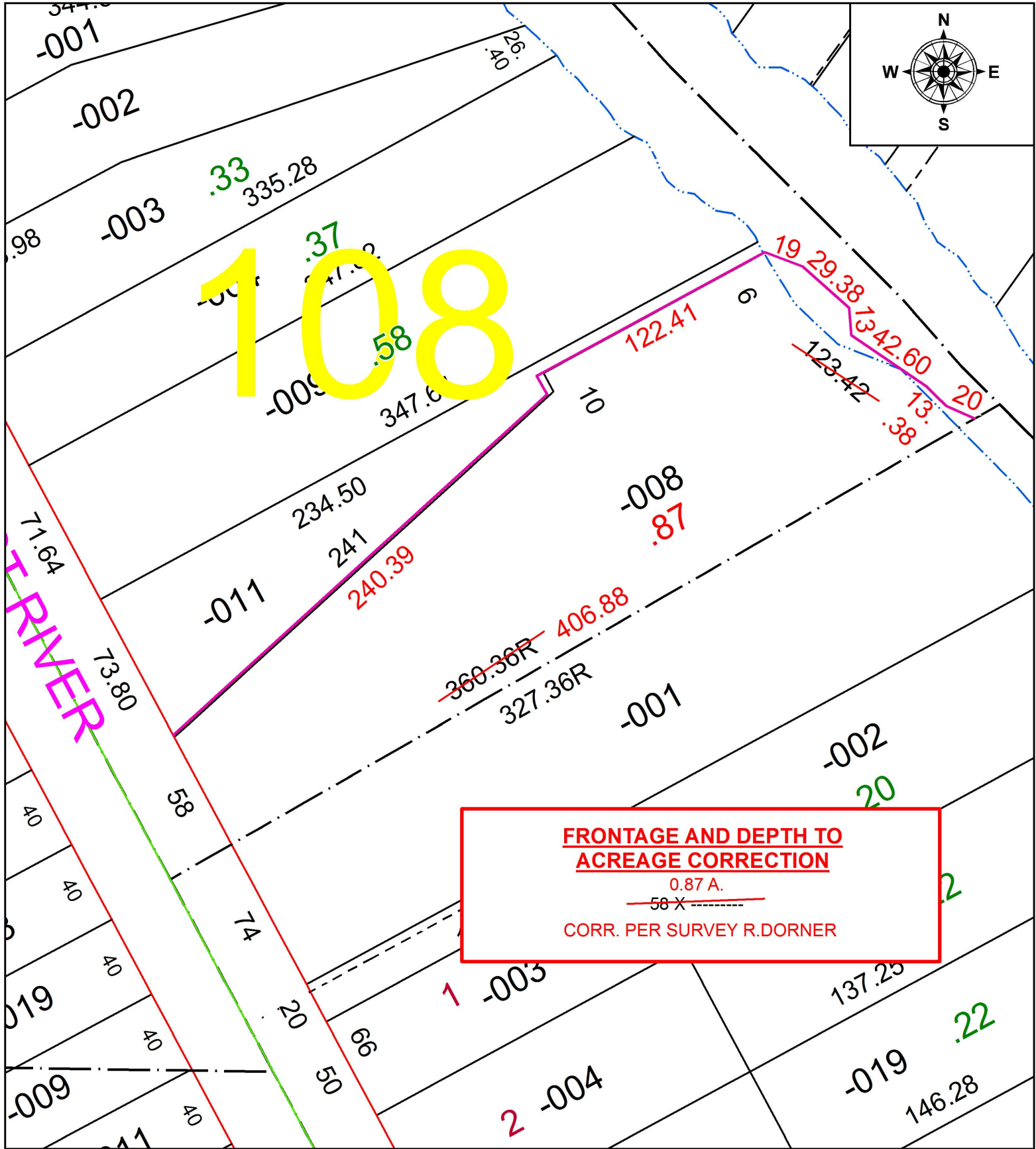


PARENT PARCEL: 06-24-108-000-008

CHILD PARCEL: XX-XX-XXX-XXX-XXX

STARTING POINT: INTERSECTION OF EAST LINE OF WEST RIVER RD. AND SOUTH LINE OF O.L.108

16-03546-D



**FRONTAGE AND DEPTH TO
ACREAGE CORRECTION**
 0.87 A.
~~58 X~~
 CORR. PER SURVEY R.DORNER



SPLITS/DEEDS PROCESSED
 LORAIN COUNTY TAX MAP DEPARTMENT
 226 MIDDLE AVE. ELYRIA, OH

SURVEYED BY: ROBERT A. DORNER
 CLOSURE: 1: 138,353
 MAP PAGE(S): 6-118
 APPROVED BY: RRM DATE: 10-27-16
 SCALE: 1" = 60 PRIOR INSTRUMENT: 20160576761