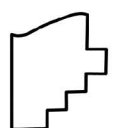
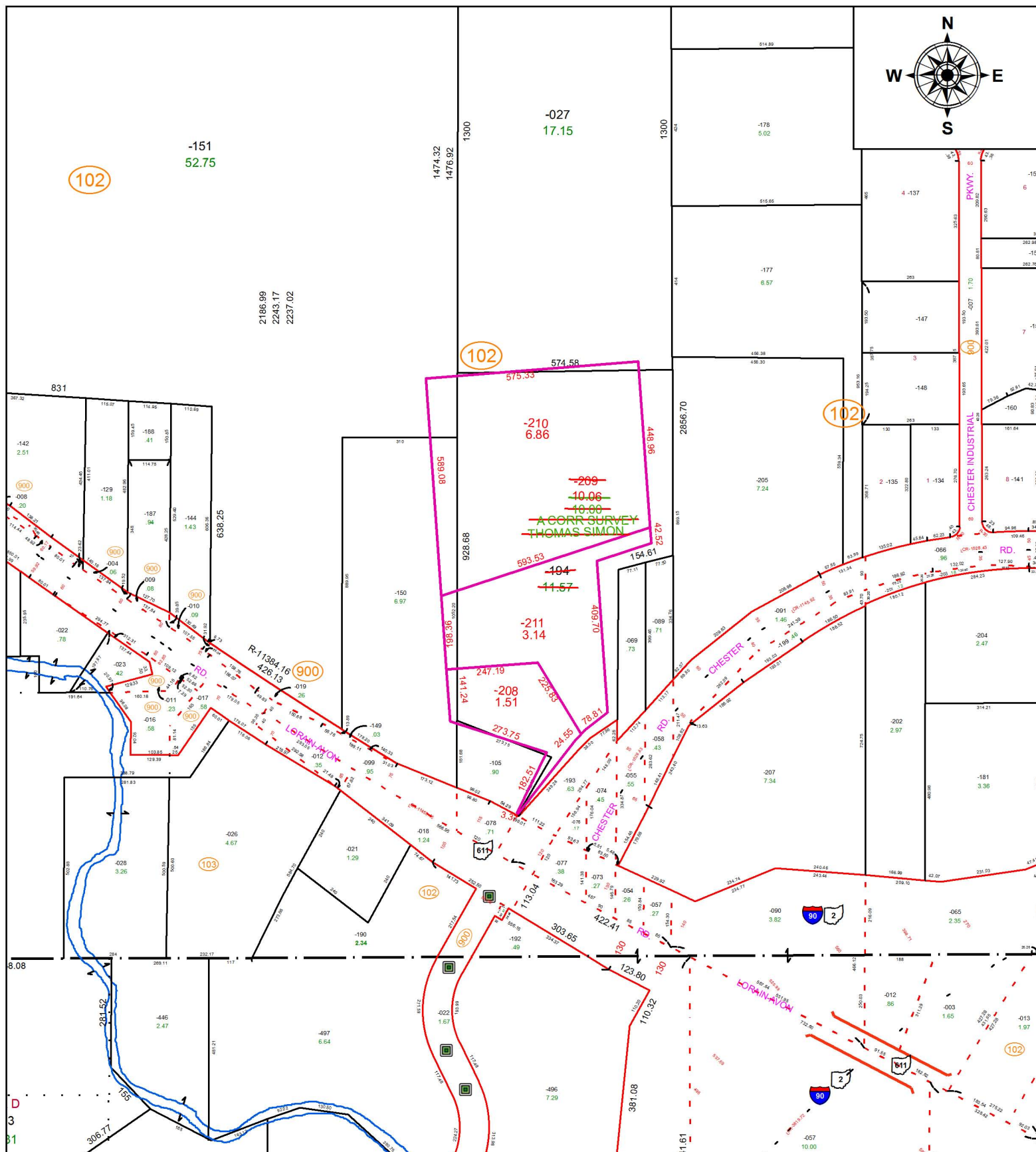


PARENT PARCEL: 04-00-004-102-194

CHILD PARCEL: 04-00-004-102-208 THRU -211

STARTING POINT: CENTERLINE OF CHESTER RD & COLORADO AVE

16-03545



SPLITS/DEEDS PROCESSED
 LORAIN COUNTY TAX MAP DEPARTMENT
 226 MIDDLE AVE. ELYRIA, OH

SURVEYED BY: THOMAS SIMON
 CLOSURE: 1:592264
 MAP PAGE(S): 04-00-004
 APPROVED BY: JAH DATE: 7/26/2016
 SCALE: 1 in = 345 ft PRIOR INSTRUMENT: 20010781885