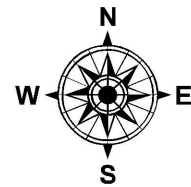
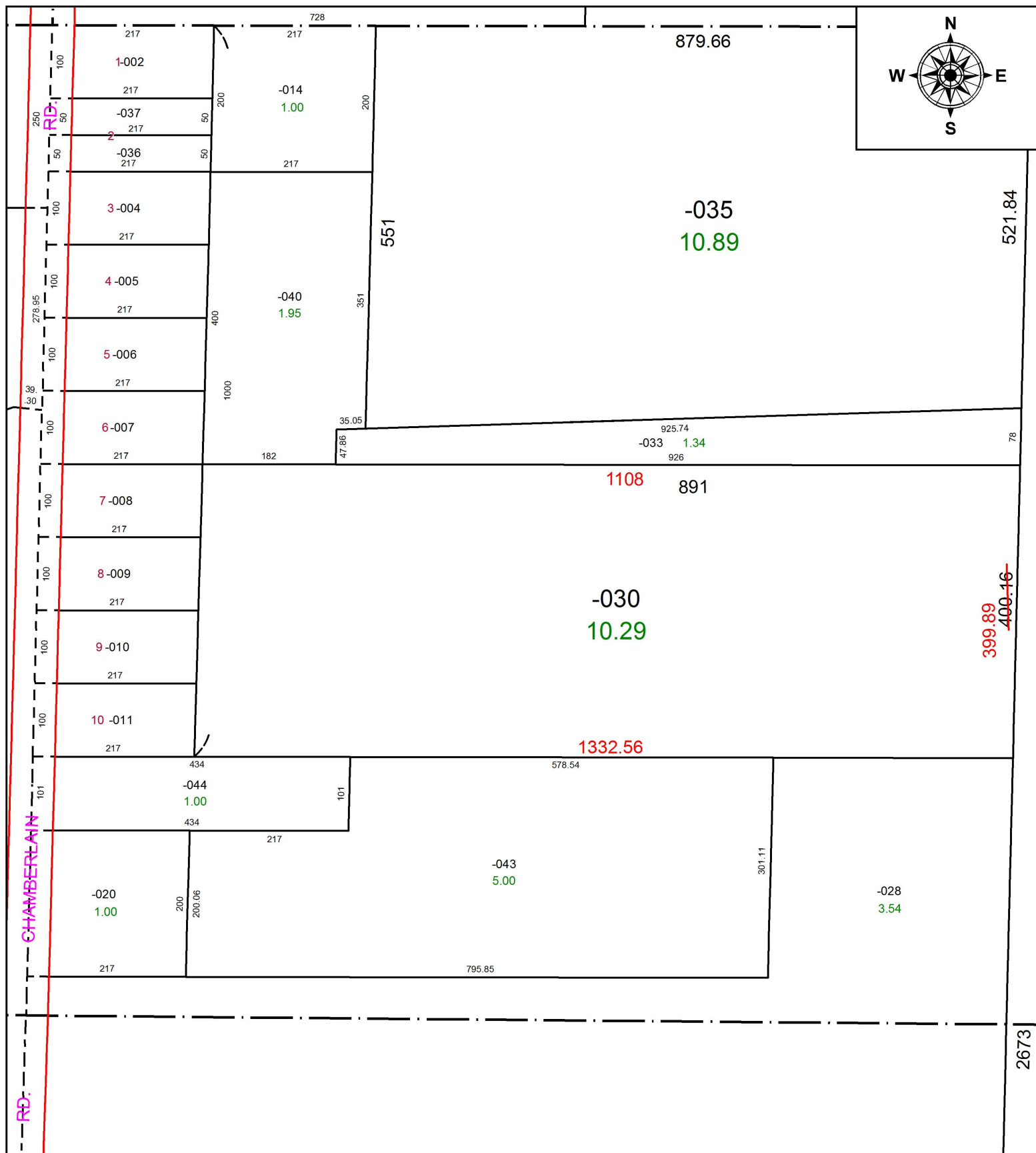


PARENT PARCEL: 16-00-041-000-030, -008, -009, -010, -011

CHILD PARCEL: SAME

STARTING POINT: CENTERLINE OF CHAMBERLAIN ST & O.L. 41

16-03544



SPLITS/DEEDS PROCESSED
 LORAIN COUNTY TAX MAP DEPARTMENT
 226 MIDDLE AVE. ELYRIA, OH

SURVEYED BY: SEAN BOLLAND
 CLOSURE: 1:2164270
 MAP PAGE(S): 16-00-041
 APPROVED BY: JAH DATE: 07-25-2016
 SCALE: 1 in = 175 ft PRIOR INSTRUMENT: 20120419561