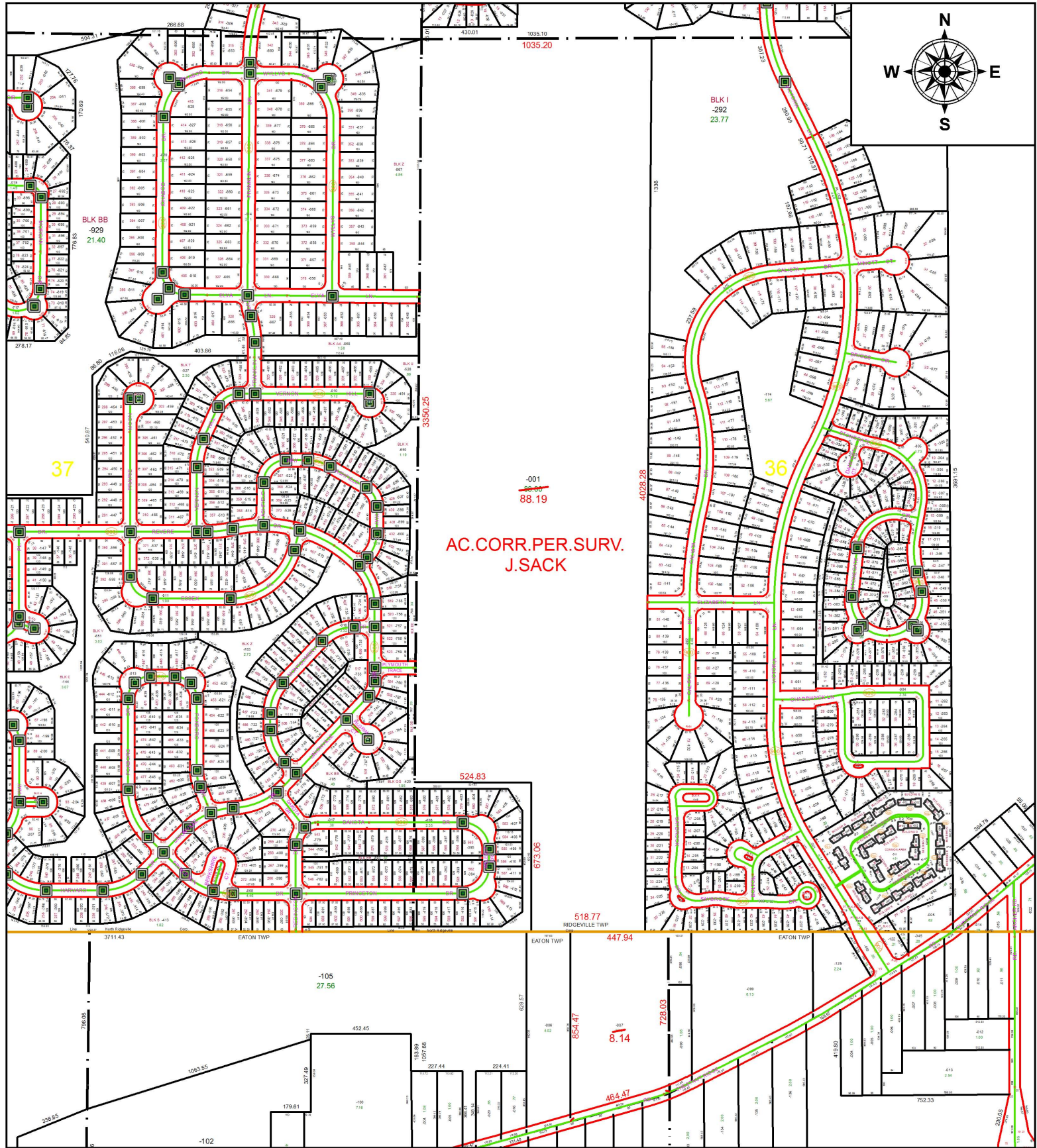


PARENT PARCEL: 07-00-036-000-001, 11-00-071-000-007

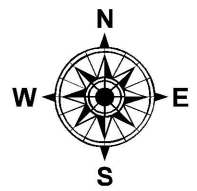
CHILD PARCEL: _____

STARTING POINT: NORTHWEST CORNER OF O.L.36

16-03538-C



AC. CORR. PER. SURV.
J. SACK



SPLITS/DEEDS PROCESSED

LORAIN COUNTY TAX MAP DEPARTMENT
226 MIDDLE AVE. ELYRIA, OH

SURVEYED BY:	JEREMY M. SACK
CLOSURE:	1: 537,741
MAP PAGE(S):	7-00-036
APPROVED BY:	RRM DATE: 10-7-16
SCALE:	1" = 575 PRIOR INSTRUMENT: 20050110522