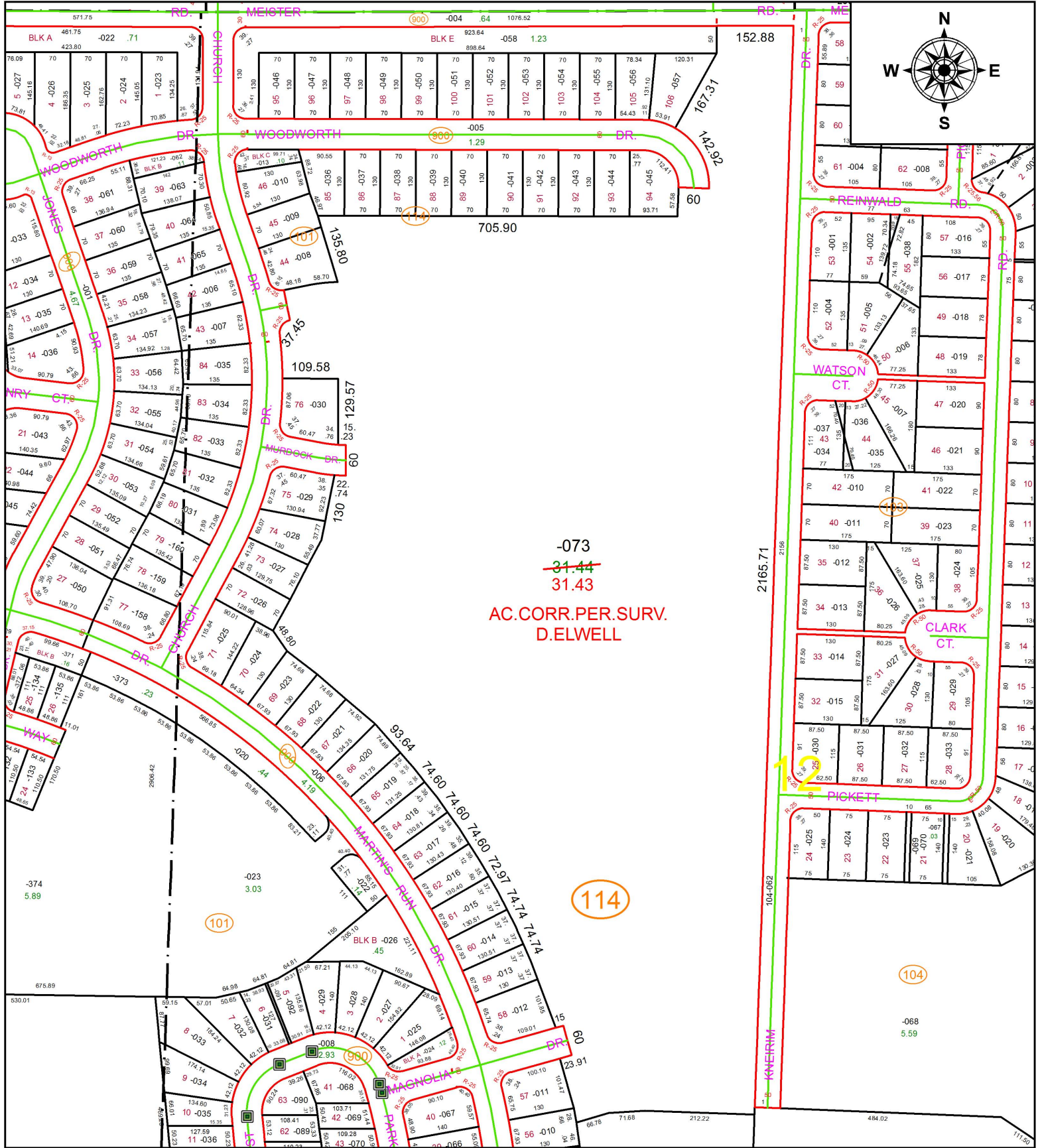
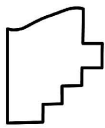


PARENT PARCEL: 02-02-012-114-073
CHILD PARCEL: XX-XX-XXX-XXX-XXX
STARTING POINT:

16-03537-A



-073
~~31.44~~
31.43
AC. CORR. PER. SURV.
D. ELWELL



SPLITS/DEEDS PROCESSED
LORAIN COUNTY TAX MAP DEPARTMENT
226 MIDDLE AVE. ELYRIA, OH

SURVEYED BY: DAVID L. ELWELL
CLOSURE: N/A
MAP PAGE(S): 2-02-012
APPROVED BY: RRM DATE: 10-4-16
SCALE: 1" = 250 PRIOR INSTRUMENT: 20160601649