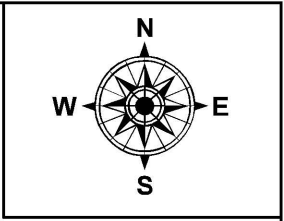
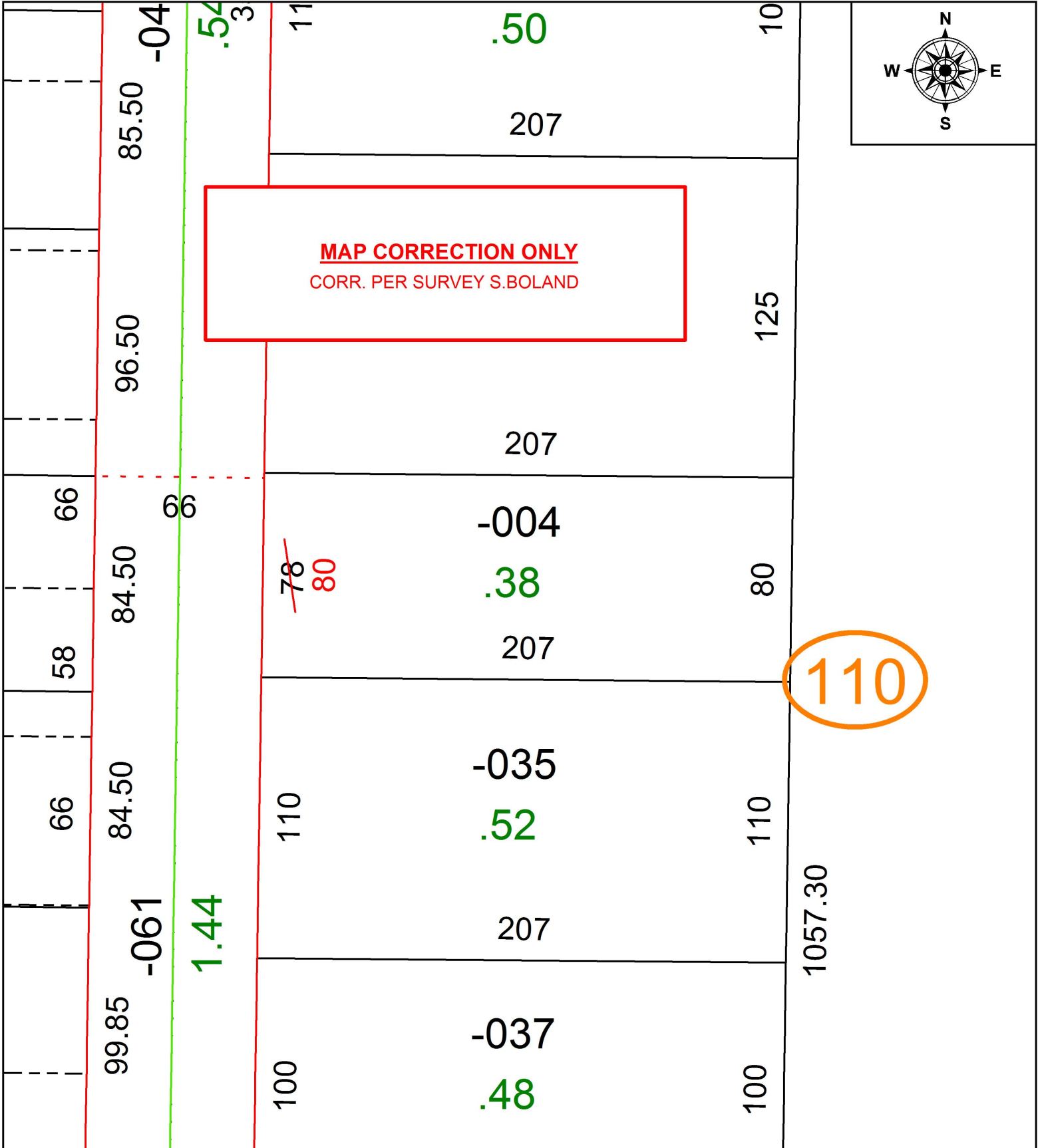


PARENT PARCEL: 18-00-022-110-004

CHILD PARCEL: XX-XX-XXX-XXX-XXX

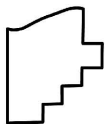
STARTING POINT: INTERSECTION OF C/L OF FOREST ST. AND C/L OF DICKSON ST.

16-03529-D



**MAP CORRECTION ONLY**  
CORR. PER SURVEY S.BOLAND

110



**SPLITS/DEEDS PROCESSED**  
LORAIN COUNTY TAX MAP DEPARTMENT  
226 MIDDLE AVE. ELYRIA, OH

SURVEYED BY: SEAN A. BOLAND  
CLOSURE: 1: 2147483648  
MAP PAGE(S): 18-00-022  
APPROVED BY: RRM DATE: 9-27-16  
SCALE: 1" = 50 PRIOR INSTRUMENT: 20160582217