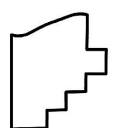
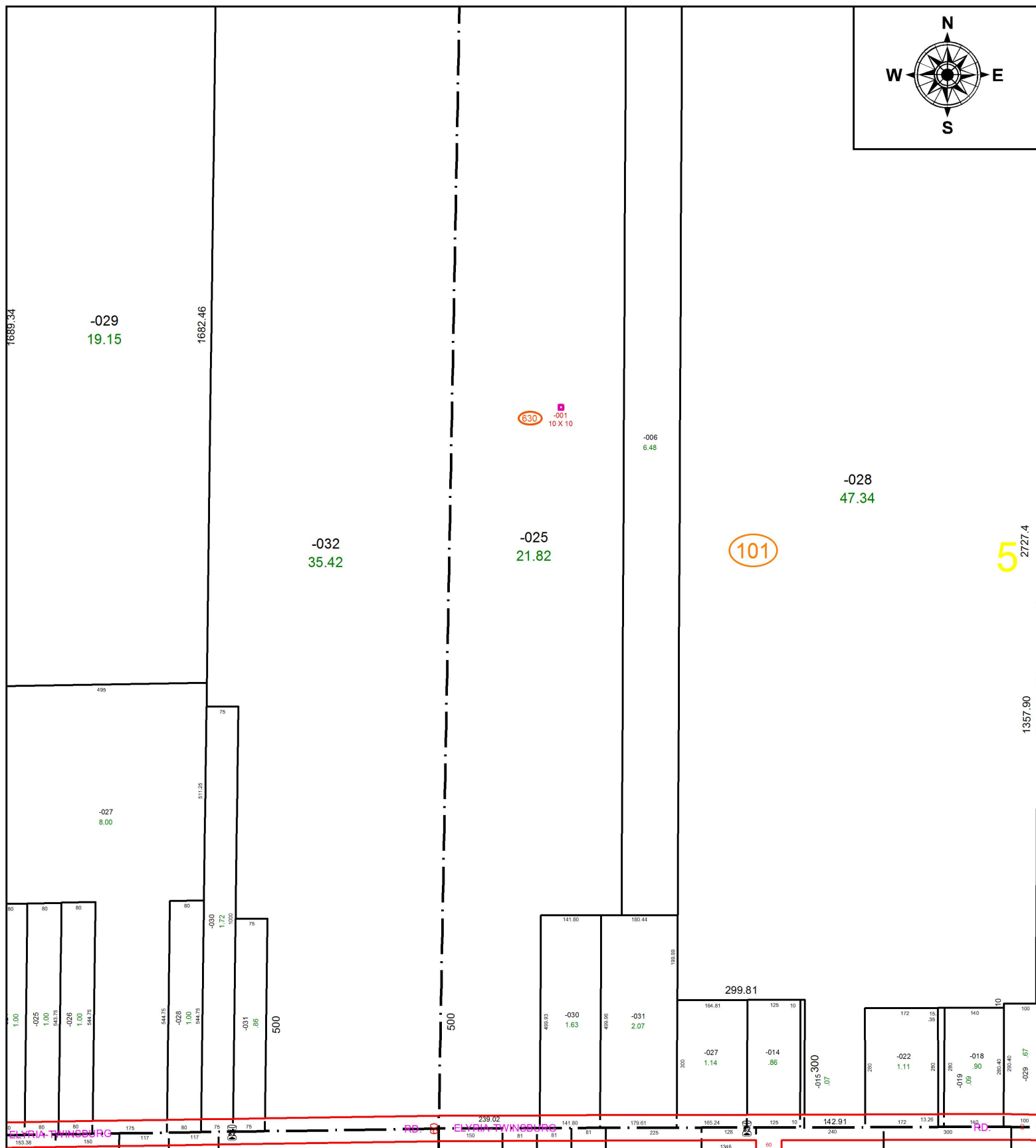
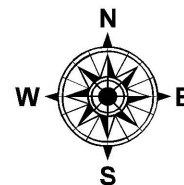


PARENT PARCEL: ADD TO DUPLICATE

CHILD PARCEL: 12-00-005-630-001

STARTING POINT: GAS WELL API# 34093601390000

16-03524-G



SPLITS/DEEDS PROCESSED
LORAIN COUNTY TAX MAP DEPARTMENT
226 MIDDLE AVE. ELYRIA, OH

SURVEYED BY: NA
CLOSURE: NA
MAP PAGE(S): 12-00-005
APPROVED BY: TJS DATE: 9/21/16
SCALE: 1" = 300 PRIOR INSTRUMENT: DV XXXX/XXXX