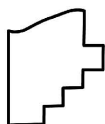
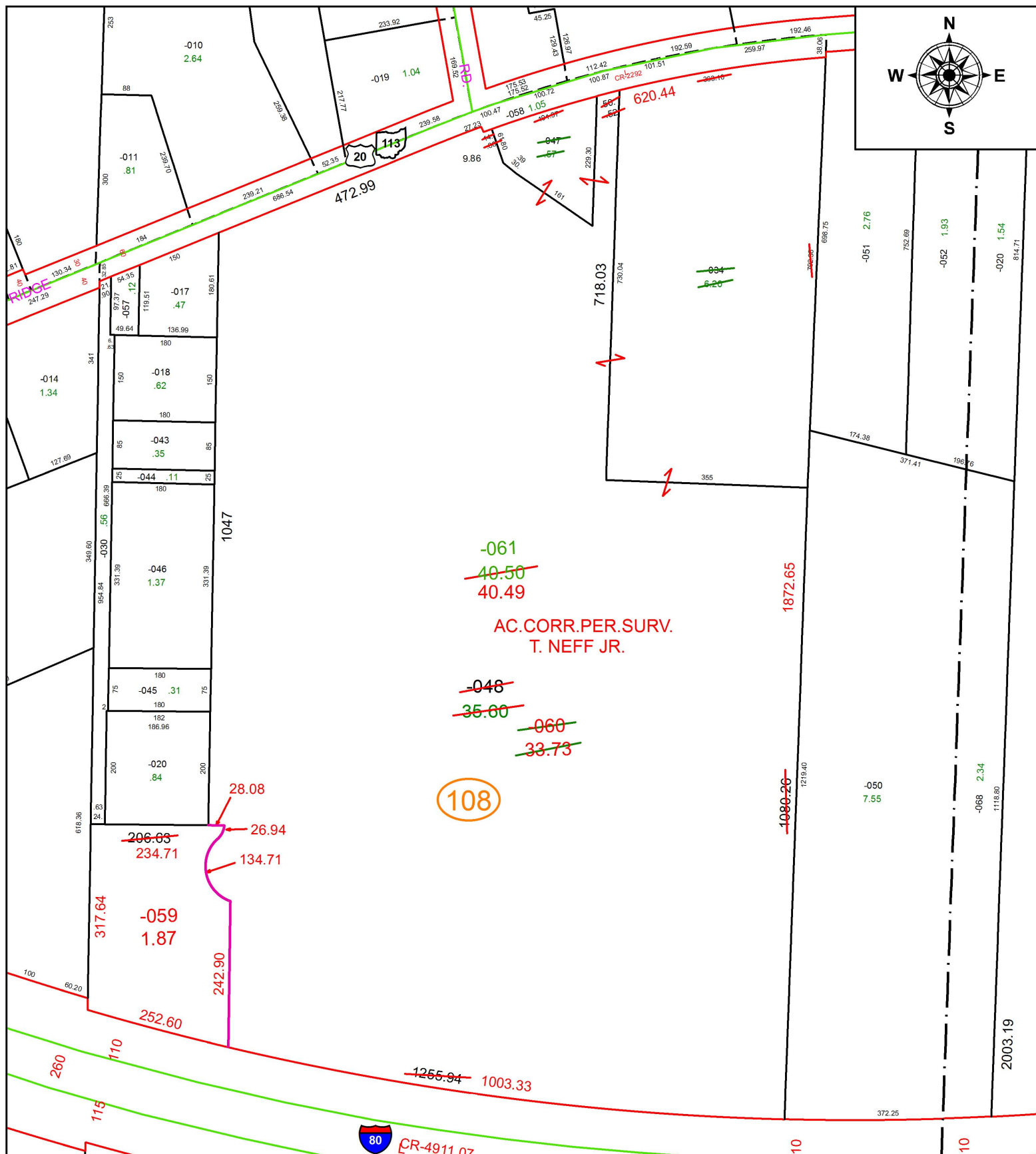


PARENT PARCEL: 07-00-046-108-034, -047, -048

CHILD PARCEL: 07-00-046-108-059 THRU -061

STARTING POINT: INTERSECTION OF C/L OF CENTER RIDGE RD. AND C/L OF FOWLERS RUN

16-03521



SPLITS/DEEDS PROCESSED
 LORAIN COUNTY TAX MAP DEPARTMENT
 226 MIDDLE AVE. ELYRIA, OH

SURVEYED BY: THOMAS J. NEFF JR.
CLOSURE: 1: 1,016,504
MAP PAGE(S): 7-00-046
APPROVED BY: RRM **DATE:** 5-24-16
SCALE: 1" = 225 **PRIOR INSTRUMENT:** 20110391325