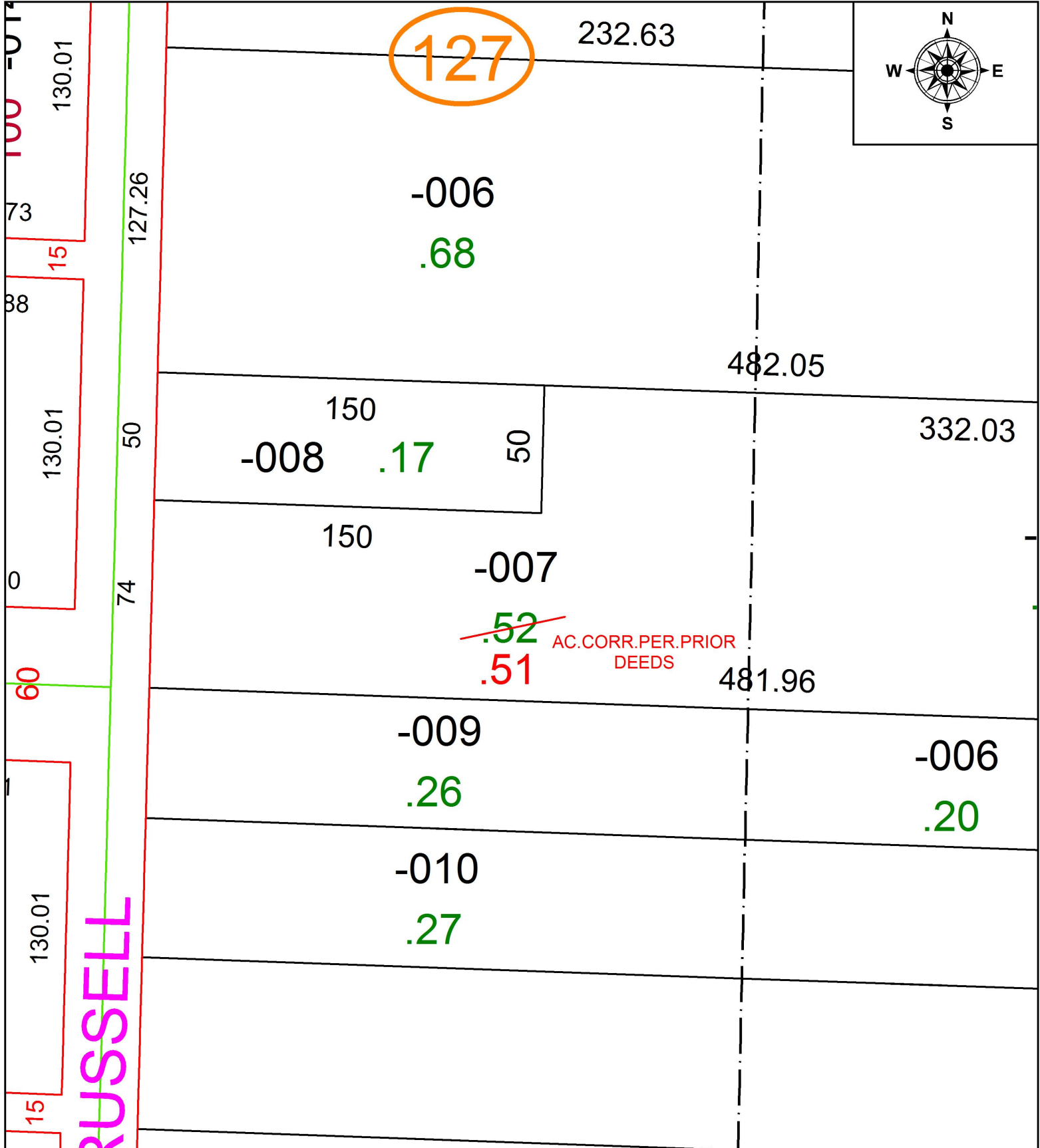


PARENT PARCEL: 03-00-103-127-007

CHILD PARCEL: XX-XX-XXX-XXX-XXX

STARTING POINT: INTERSECTION OF EAST LINE OF RUSSELL ST. AND C/L OF S. BROADWAY

16-03521-A



**SPLITS/DEEDS PROCESSED**  
 LORAIN COUNTY TAX MAP DEPARTMENT  
 226 MIDDLE AVE. ELYRIA, OH

SURVEYED BY: \_\_\_\_\_ N/A  
 CLOSURE: \_\_\_\_\_ N/A  
 MAP PAGE(S): \_\_\_\_\_ 3-00-103  
 APPROVED BY: \_\_\_\_\_ RRM DATE: \_\_\_\_\_ 9-19-16  
 SCALE: \_\_\_\_\_ 1" = 50 \_\_\_\_\_ PRIOR INSTRUMENT: \_\_\_\_\_ 20160600801