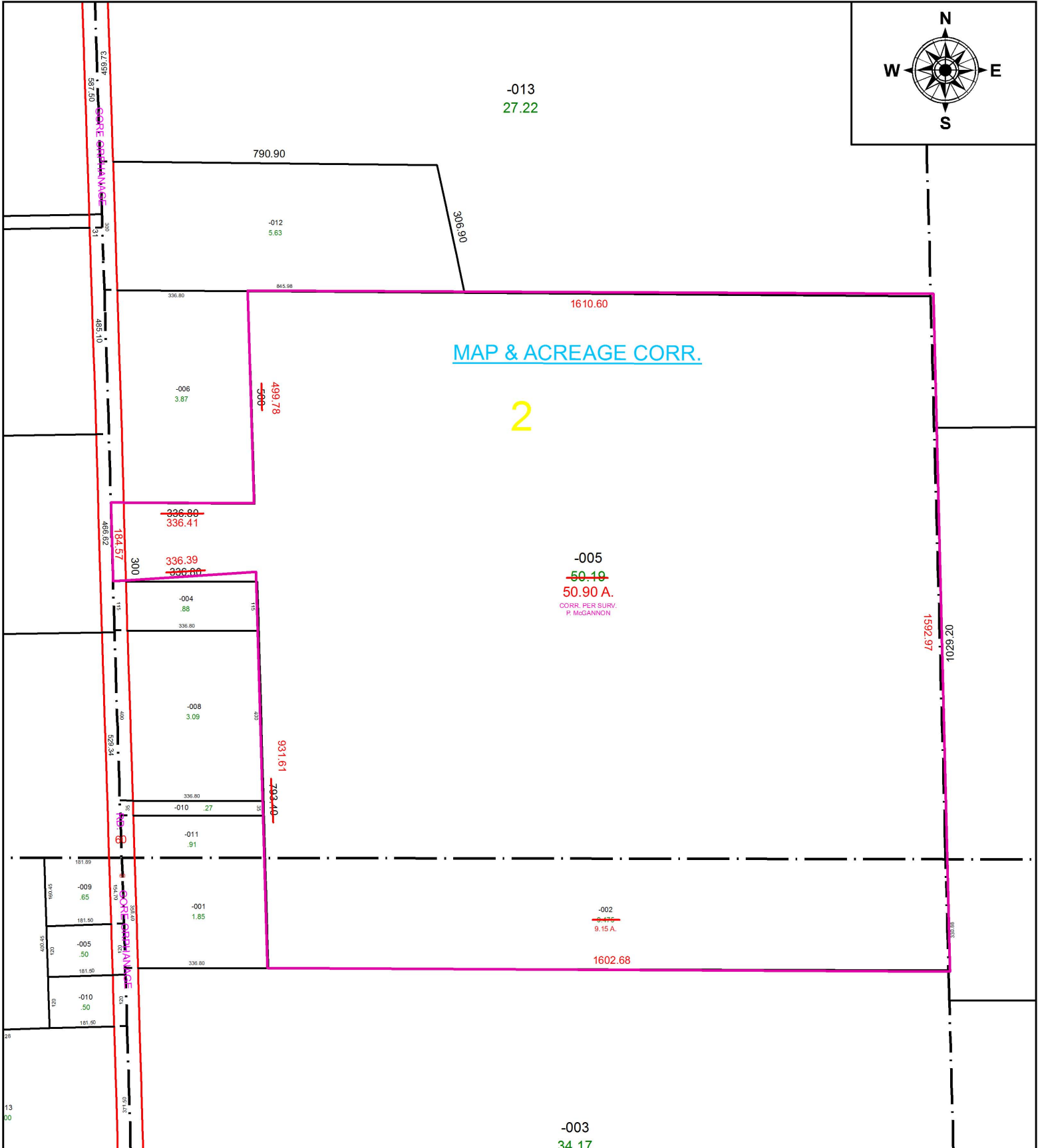
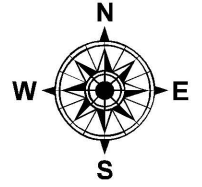


PARENT PARCEL: 08-13-002-000-005 & 08-13-019-000-002

CHILD PARCEL: XX-XX-XXX-XXX-XXX

STARTING POINT: I.P. FOUND, CL OF GORE ORPHANAGE & NORTH LINE OF O.L. 2

16-03519-C



SPLITS/DEEDS PROCESSED
LORAIN COUNTY TAX MAP DEPARTMENT
226 MIDDLE AVE. ELYRIA, OH

SURVEYED BY: PATRICK A. McGANNON

CLOSURE: 1: 43,000

MAP PAGE(S): 08-13-002 & -019

APPROVED BY: TJS DATE: 9/21/16

SCALE: 1" = 300 PRIOR INSTRUMENT: 2015-0559942