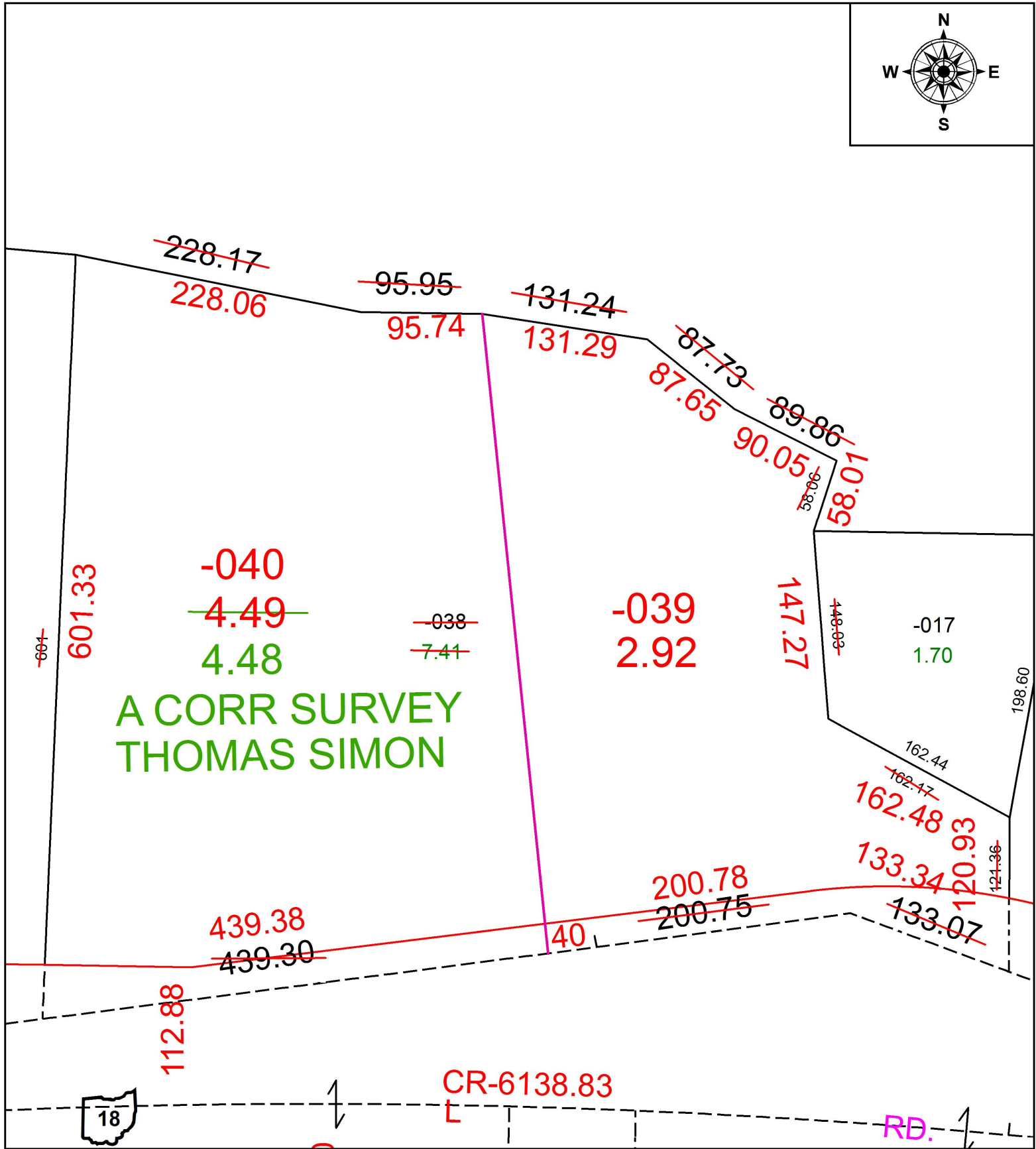


PARENT PARCEL: 17-07-009-000-038

CHILD PARCEL: 17-07-009-000-039, -040

STARTING POINT: CENTERLINE OF ST RT 18 & WESTERLY LINE OF O.L. 9 TR 7

16-03515



A CORR SURVEY
THOMAS SIMON

SPLITS/DEEDS PROCESSED
 LORAIN COUNTY TAX MAP DEPARTMENT
 226 MIDDLE AVE. ELYRIA, OH

SURVEYED BY: THOMAS SIMON
 CLOSURE: 1:117731
 MAP PAGE(S): 17-D
 APPROVED BY: JAH DATE: 4/28/2016
 SCALE: 1 in = 100 ft PRIOR INSTRUMENT: 20050050514