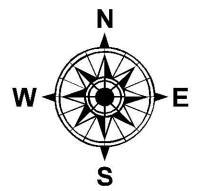
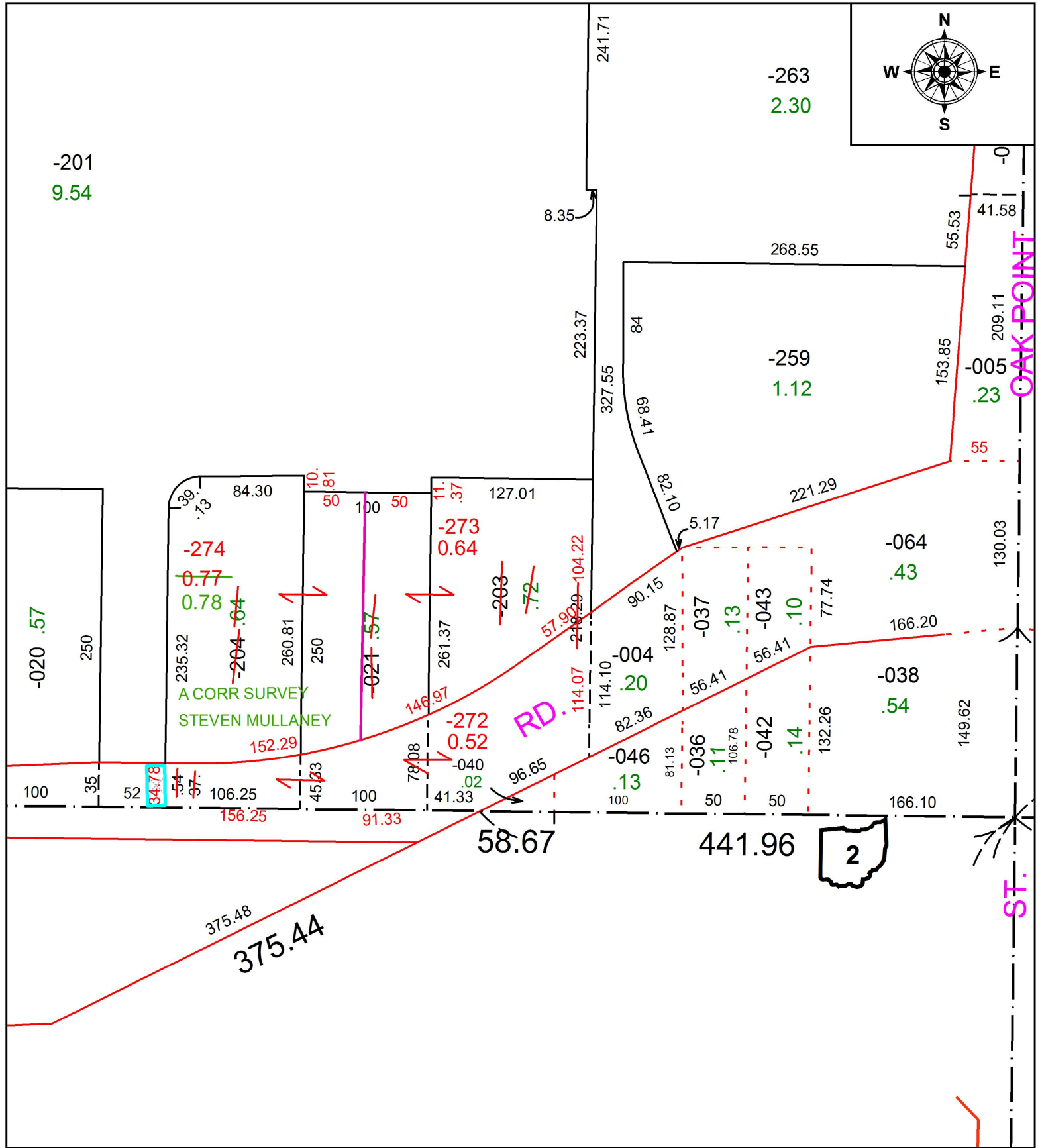


PARENT PARCEL: 05-00-001-000-021, -203, -204

CHILD PARCEL: 05-00-001-000-272, -273, -274

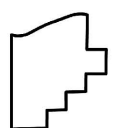
STARTING POINT: SOUTHEAST CORNER OF AMHERST TWP LOT 1

16-03514



OAK POINT

ST.



**SPLITS/DEEDS PROCESSED**  
 LORAIN COUNTY TAX MAP DEPARTMENT  
 226 MIDDLE AVE. ELYRIA, OH

SURVEYED BY: STEVEN MULLANEY  
 CLOSURE: 1:-2147483648  
 MAP PAGE(S): 05-00-001  
 APPROVED BY: JAH DATE: 4/27/2016  
 SCALE: 1 in = 100 ft PRIOR INSTRUMENT: 20060179488