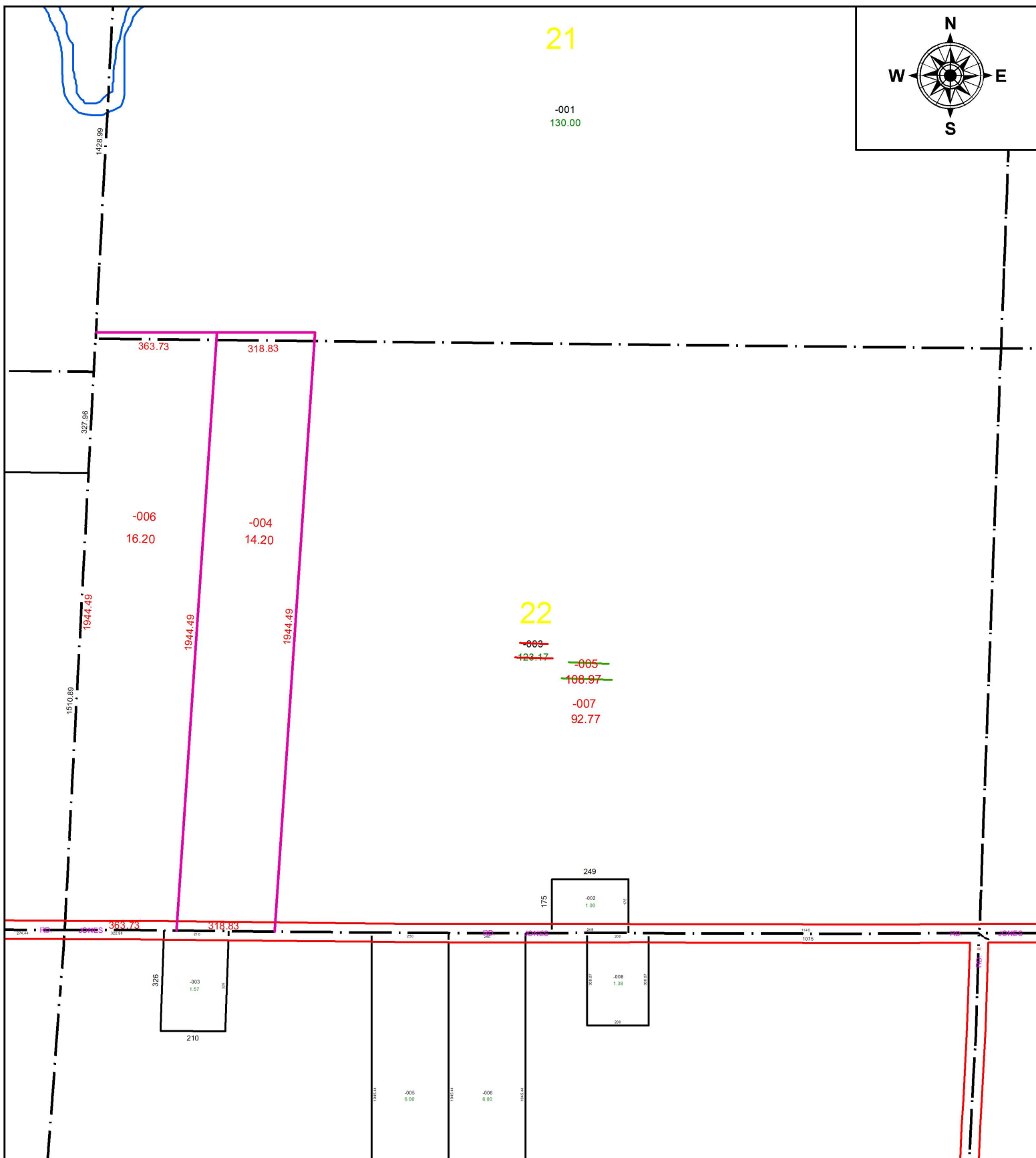


PARENT PARCEL: 17-06-022-000-003

CHILD PARCEL: 17-06-022-000-004, -005, -006, -007

STARTING POINT: CENTERLINE OF JONES RD & O.L. 22

16-03513



SPLITS/DEEDS PROCESSED
 LORAIN COUNTY TAX MAP DEPARTMENT
 226 MIDDLE AVE. ELYRIA, OH

SURVEYED BY: RICHARD CARLSON

CLOSURE: 1:-2147483648

MAP PAGE(S): 17-G

APPROVED BY: JAH DATE: 4/27/2016

SCALE: 1 in = 417 ft PRIOR INSTRUMENT: 20100353658