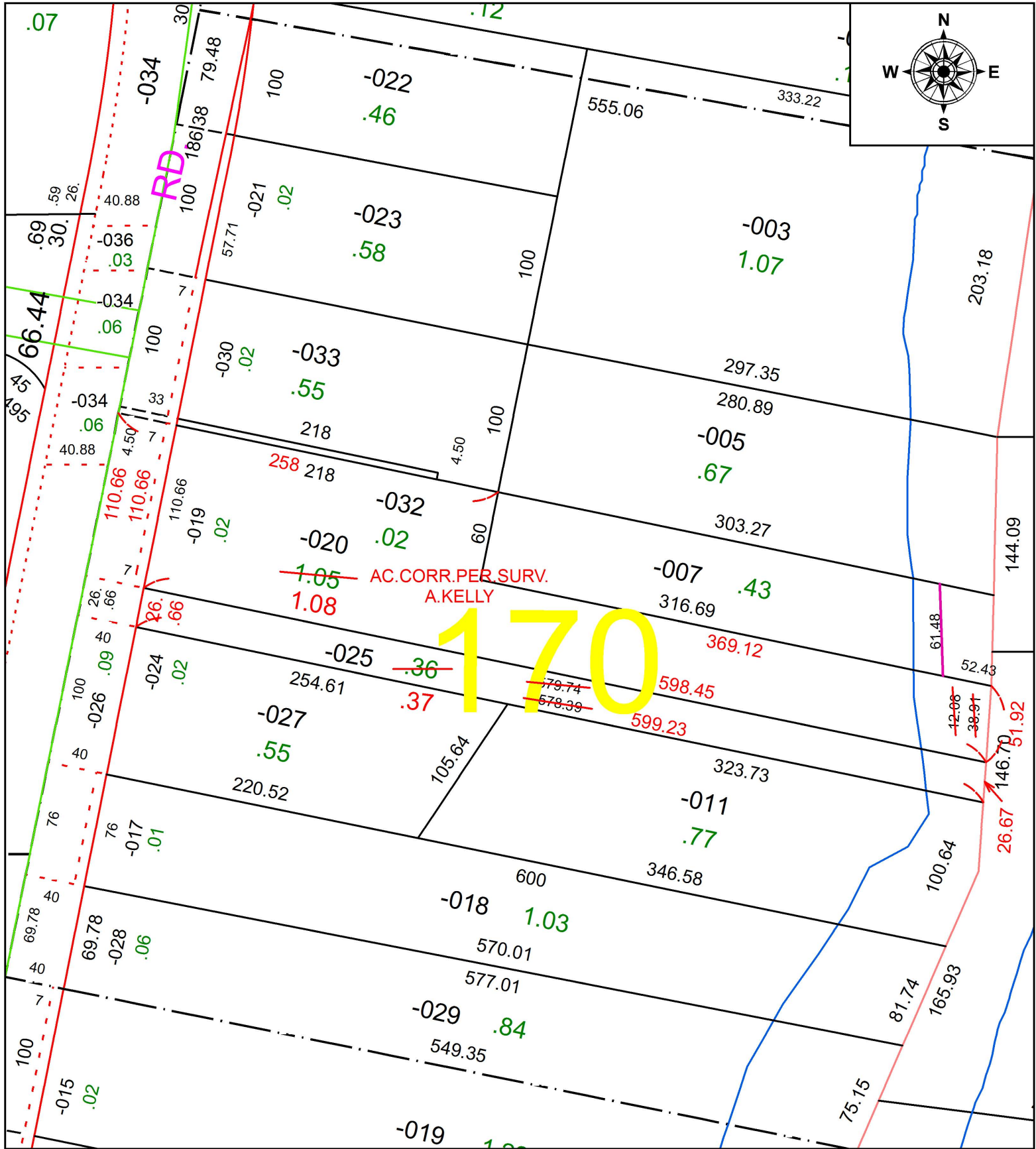


PARENT PARCEL: 06-24-170-000-007,-020,-025,-032

CHILD PARCEL: XX-XX-XXX-XXX-XXX

STARTING POINT: POINT OF TANGENCY IN C/L OF WEST RIVER RD.

16-03513-D



**SPLITS/DEEDS PROCESSED**  
 LORAIN COUNTY TAX MAP DEPARTMENT  
 226 MIDDLE AVE. ELYRIA, OH

SURVEYED BY: AMY M. KELLY  
 CLOSURE: 1:200,390  
 MAP PAGE(S): 6-66  
 APPROVED BY: RRM DATE: 9-9-16  
 SCALE: 1" = 85 PRIOR INSTRUMENT: DV 1329/359