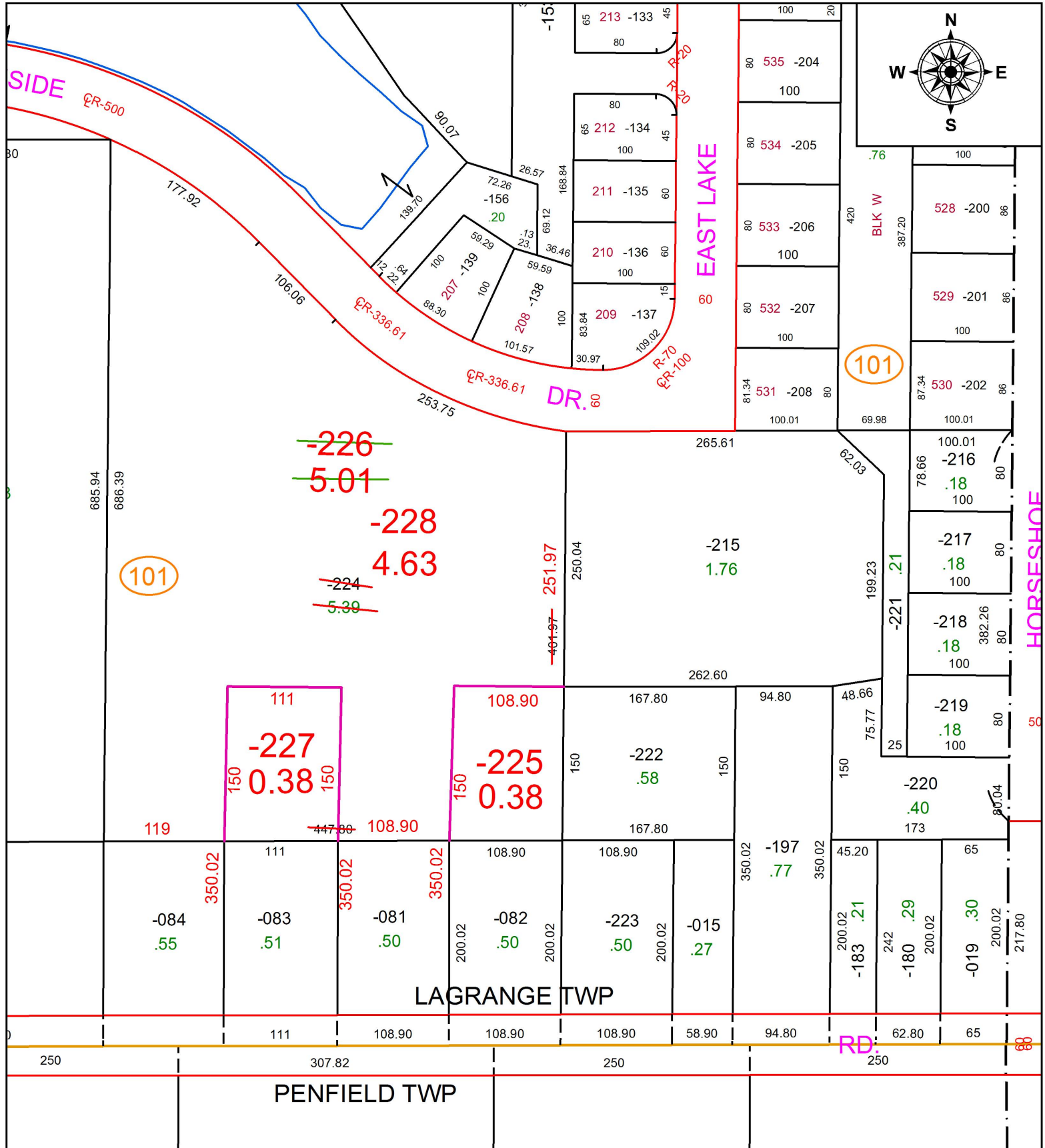


PARENT PARCEL: 15-00-099-101-224

CHILD PARCEL: 15-00-099-101-225, -226, -227, -228

STARTING POINT: CENTERLINE OF WEBSTER RD & O.L. 99

16-03511



**SPLITS/DEEDS PROCESSED**  
 LORAIN COUNTY TAX MAP DEPARTMENT  
 226 MIDDLE AVE. ELYRIA, OH

SURVEYED BY: THOMAS SIMON  
 CLOSURE: 1:-2147483648  
 MAP PAGE(S): 15-00-099  
 APPROVED BY: JAH DATE: 4/27/2016  
 SCALE: 1 in = 125 ft PRIOR INSTRUMENT: 20150554268