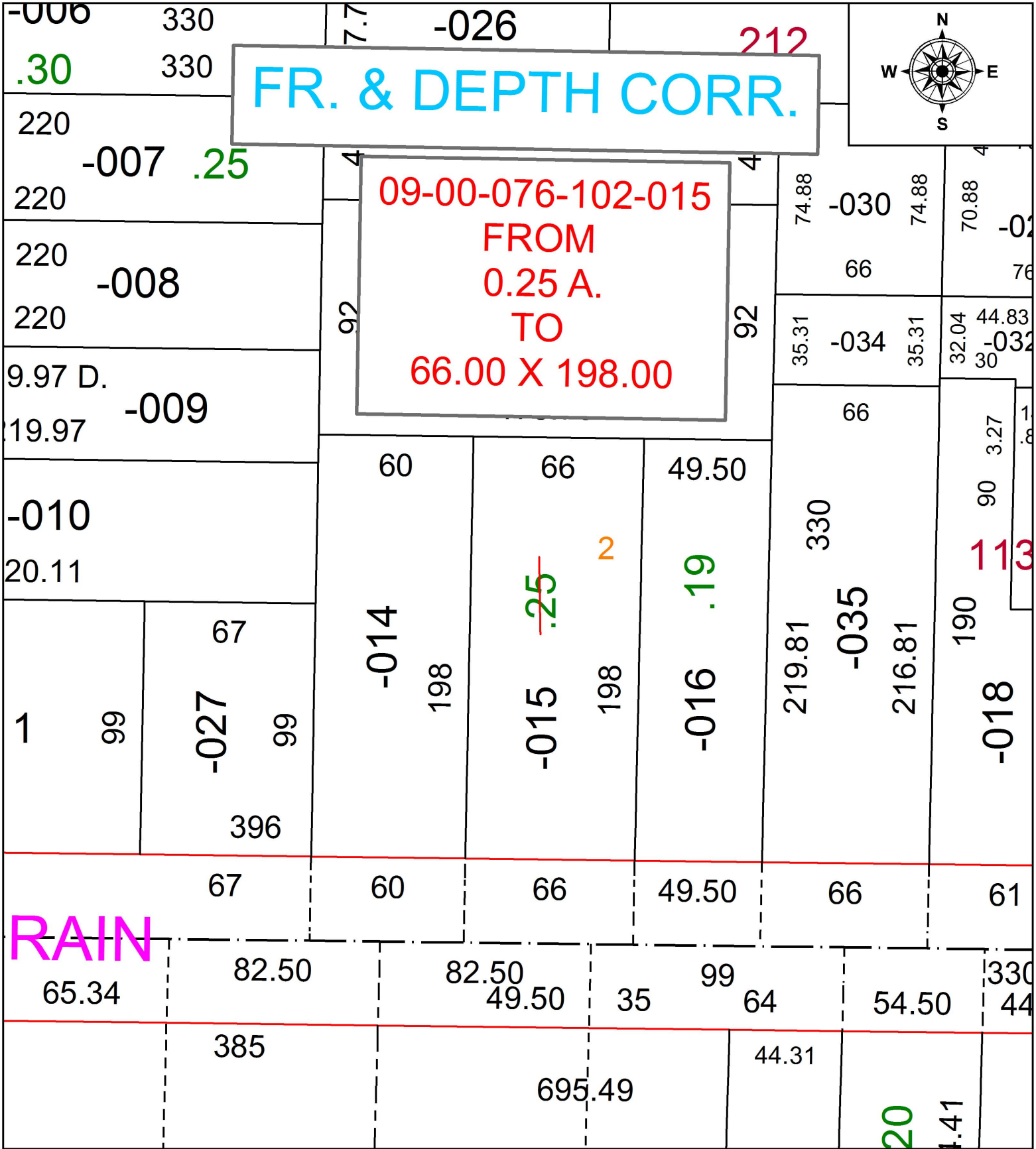


PARENT PARCEL: 09-00-076-102-015

CHILD PARCEL: XX-XX-XXX-XXX-XXX

STARTING POINT: CL OF E. LORAIN ST. AT A POINT 49.5' WESTERLY FROM S.E. CORNER OF VILLAGE LOT NO. 2

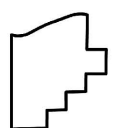
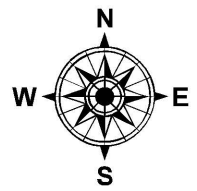
16-03505-C



RAIN

FR. & DEPTH CORR.

09-00-076-102-015
FROM
0.25 A.
TO
66.00 X 198.00



SPLITS/DEEDS PROCESSED
LORAIN COUNTY TAX MAP DEPARTMENT
226 MIDDLE AVE. ELYRIA, OH

SURVEYED BY: NA
CLOSURE: 1:33,000
MAP PAGE(S): 9-00-076
APPROVED BY: TJS DATE: 11/4/16
SCALE: 1" = 200' PRIOR INSTRUMENT: 2008-0240234