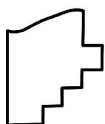
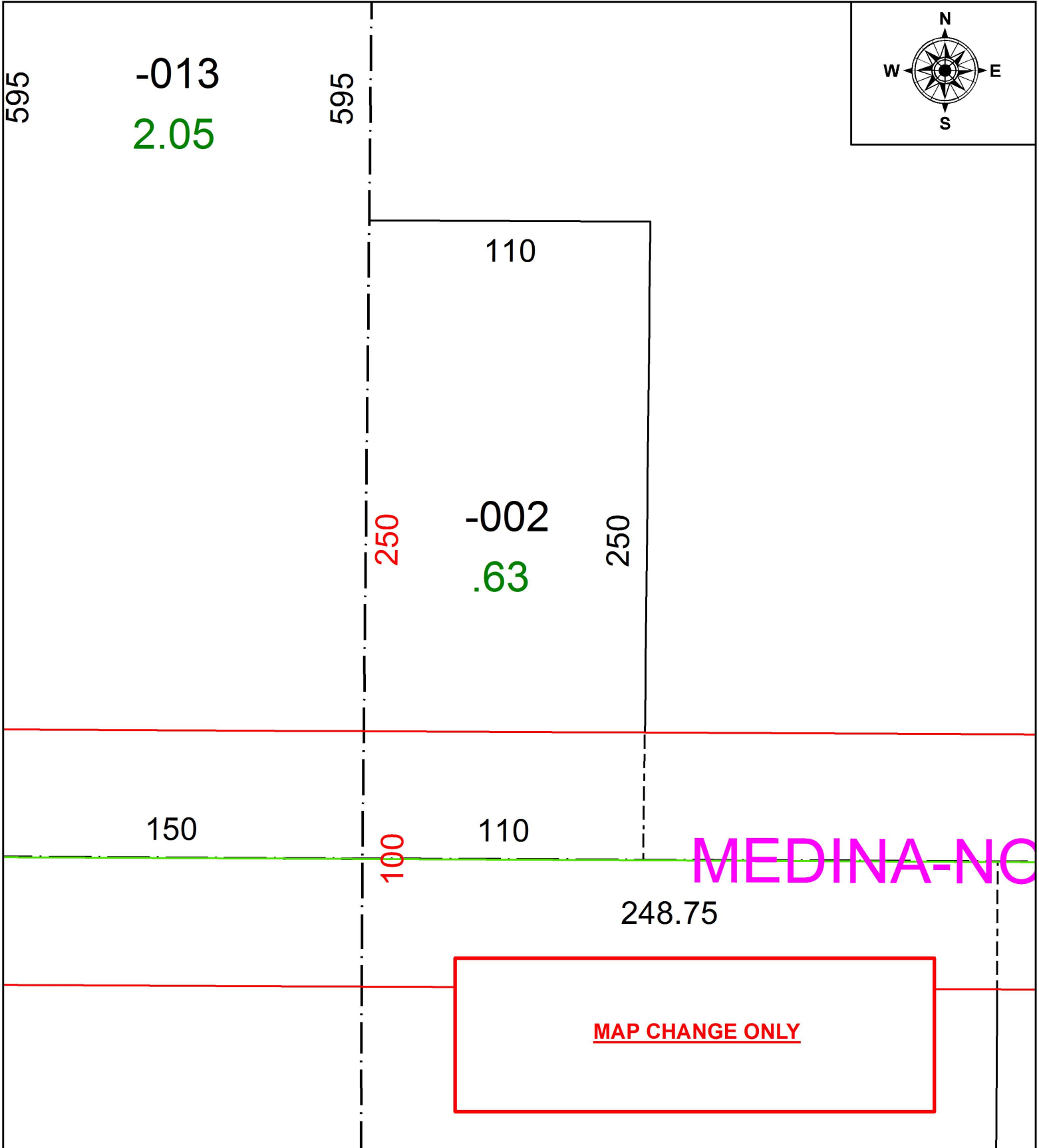


PARENT PARCEL: 18-00-004-000-002

CHILD PARCEL: XX-XX-XXX-XXX-XXX

STARTING POINT: SOUTHWEST CORNER OF O.L.4

16-03504-X



SPLITS/DEEDS PROCESSED
 LORAIN COUNTY TAX MAP DEPARTMENT
 226 MIDDLE AVE. ELYRIA, OH

SURVEYED BY: WILFREDO BARBOSA
 CLOSURE: 1:2,147,483,648
 MAP PAGE(S): 18-00-004
 APPROVED BY: RRM DATE: 8-26-16
 SCALE: 1" = 50 PRIOR INSTRUMENT: 20160590985