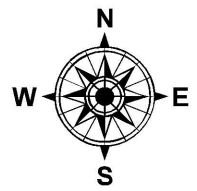
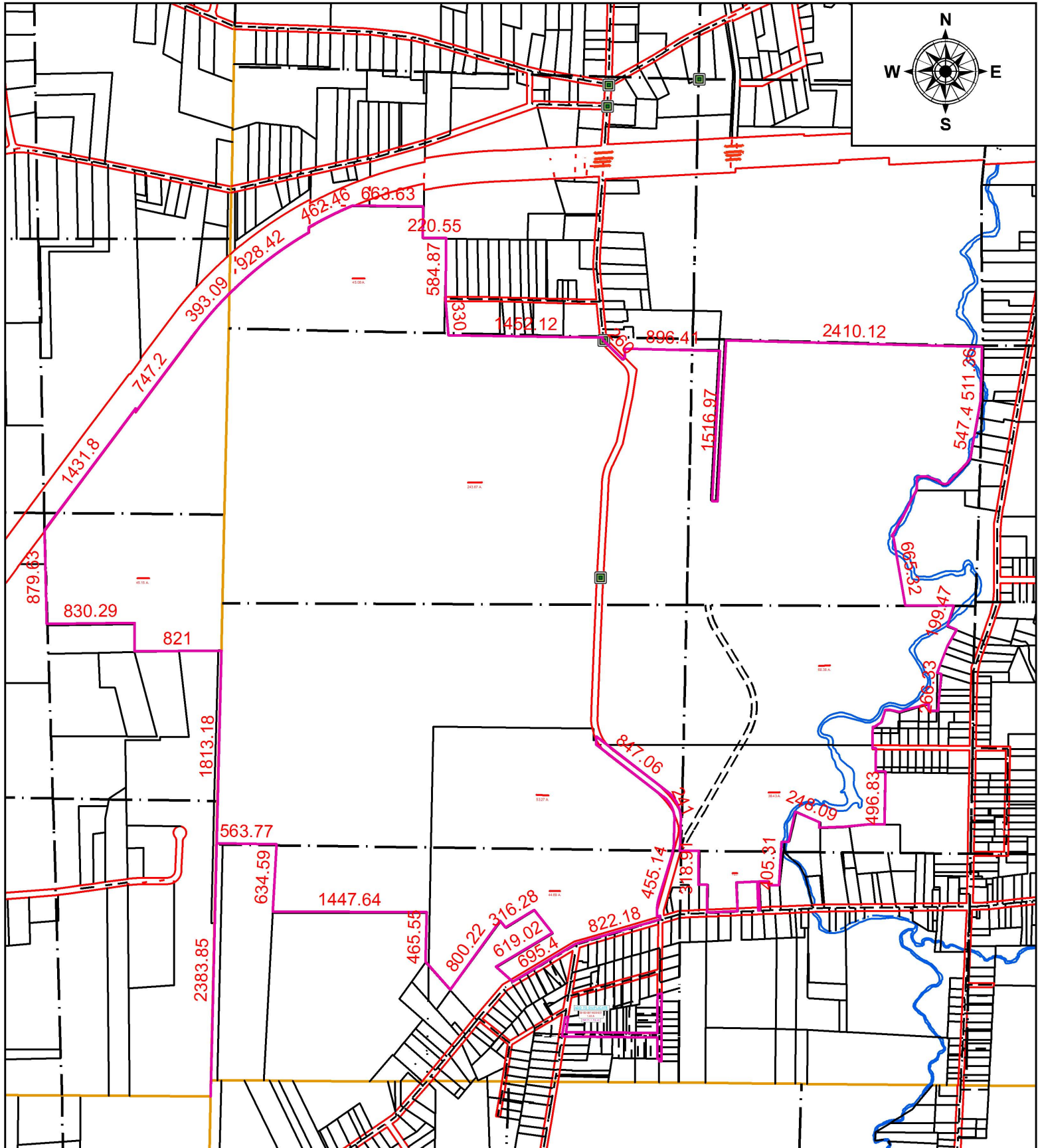


PARENT PARCEL: 01-00-057-000-012, 01-00-072-000-013, 05-00-091-101-014, 05-00-091-102-015, 05-00-092-000-016 THRU -018, 05-00-093-000-022, 05-00-094-102-024, 05-00-098-000-016, 05-00-099-000-092, 05-00-099-000-078, 05-00-099-000-090, & 05-00-010-101-046

CHILD PARCEL: XX-XX-XXX-XXX-XXX

16-03500

STARTING POINT: STONE MON. AT THE S.E. CORNER OF O.L. 73 IN BROWHELM TWP.



SPLITS/DEEDS PROCESSED
 LORAIN COUNTY TAX MAP DEPARTMENT
 226 MIDDLE AVE. ELYRIA, OH

SURVEYED BY: JOHN ALBAN
 CLOSURE: 1: 33,000
 MAP PAGE(S): 01-00-072
 APPROVED BY: TJS DATE: 8/12/16
 SCALE: 1" = 200 PRIOR INSTRUMENT: 2008-0257827