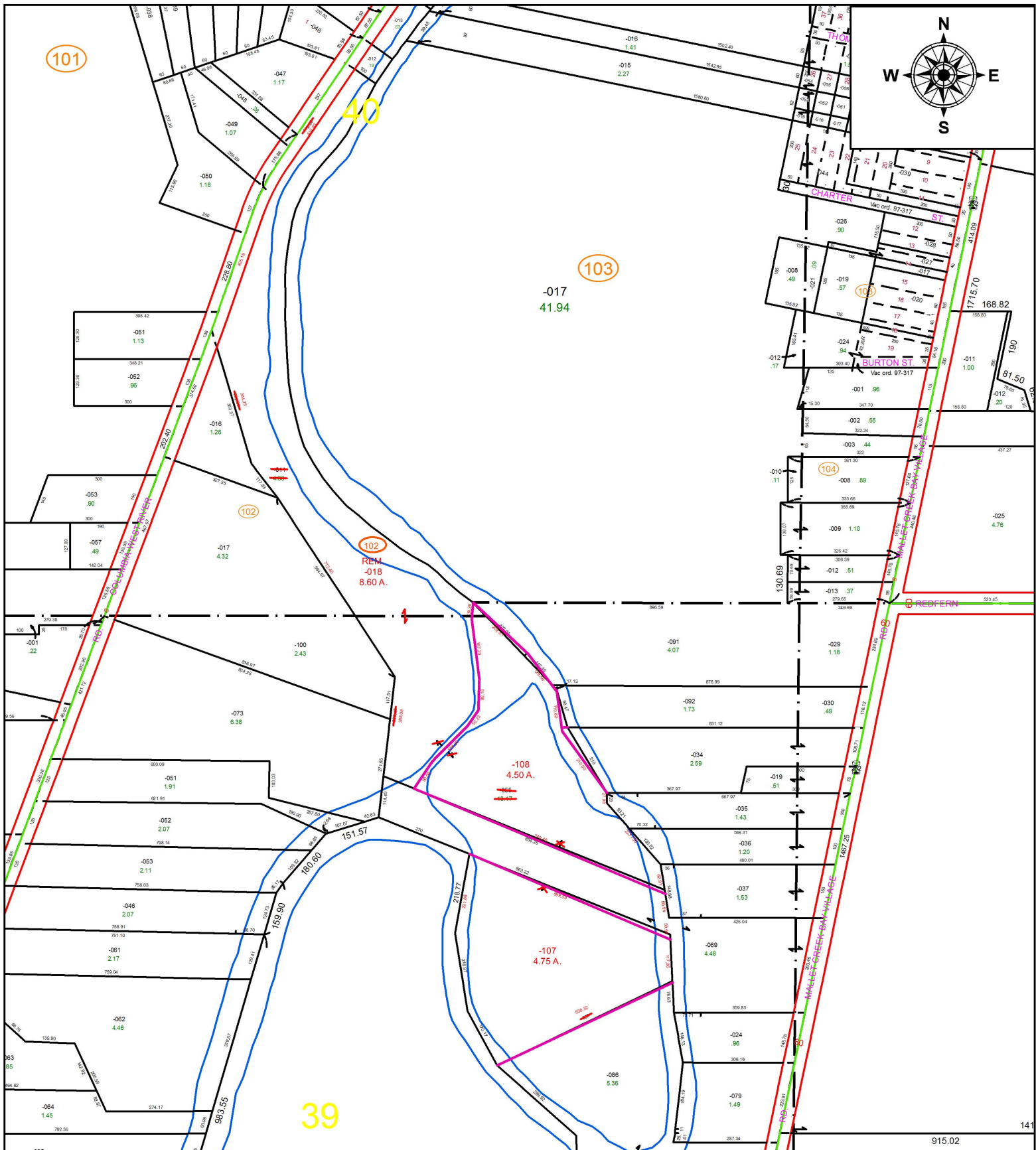


PARENT PARCEL: 12-00-039-000-055 & 12-00-040-102-011  
 CHILD PARCEL: 12-00-039-000-107 & -108, & 12-00-040-102-018  
 STARTING POINT: CL OF EAST RIVER RD. & NORTH LINE OF O.L. 22

16-03498



**SPLITS/DEEDS PROCESSED**  
 LORAIN COUNTY TAX MAP DEPARTMENT  
 226 MIDDLE AVE. ELYRIA, OH

SURVEYED BY: GEORGE HOFMANN  
 CLOSURE: 0.01 : 10,000  
 MAP PAGE(S): 12-00-039 & -040  
 APPROVED BY: TJS DATE: 4/1/16  
 SCALE: 1 in = 350 ft PRIOR INSTRUMENT: 2004-0037692