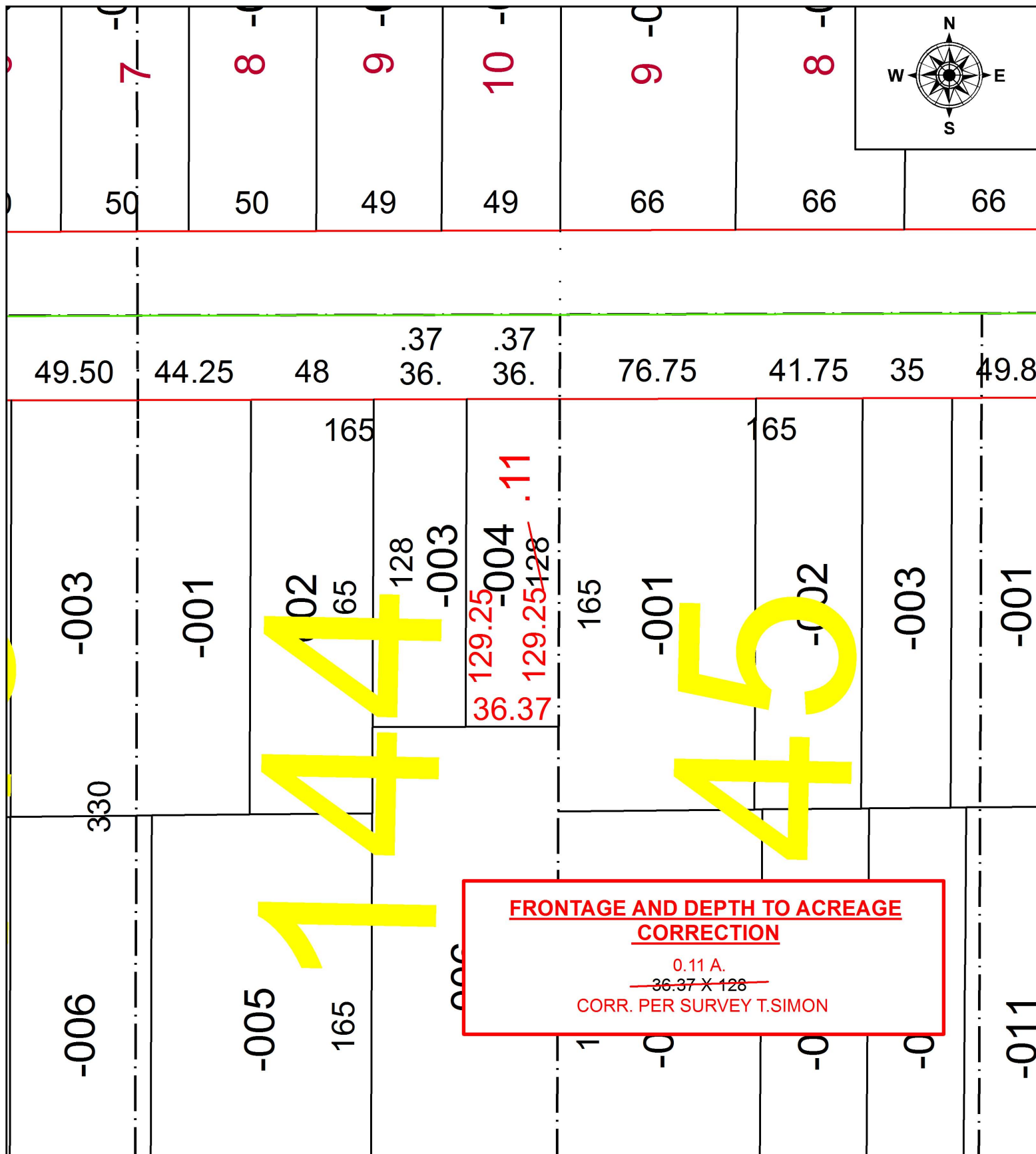


PARENT PARCEL: 06-25-144-000-004

CHILD PARCEL: XX-XX-XXX-XXX-XXX

STARTING POINT: INTERSECTION OF C/L OF GLENWOOD ST. AND C/L OF COLUMBUS ST.

16-03498-D



SPLITS/DEEDS PROCESSED
LORAIN COUNTY TAX MAP DEPARTMENT
226 MIDDLE AVE. ELYRIA, OH

SURVEYED BY: THOMAS A. SIMON
 CLOSURE: 1: 2,147,483,648
 MAP PAGE(S): 6-102
 APPROVED BY: RRM DATE: 8-18-16
 SCALE: 1" = 50 PRIOR INSTRUMENT: 20130457540