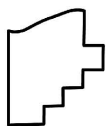
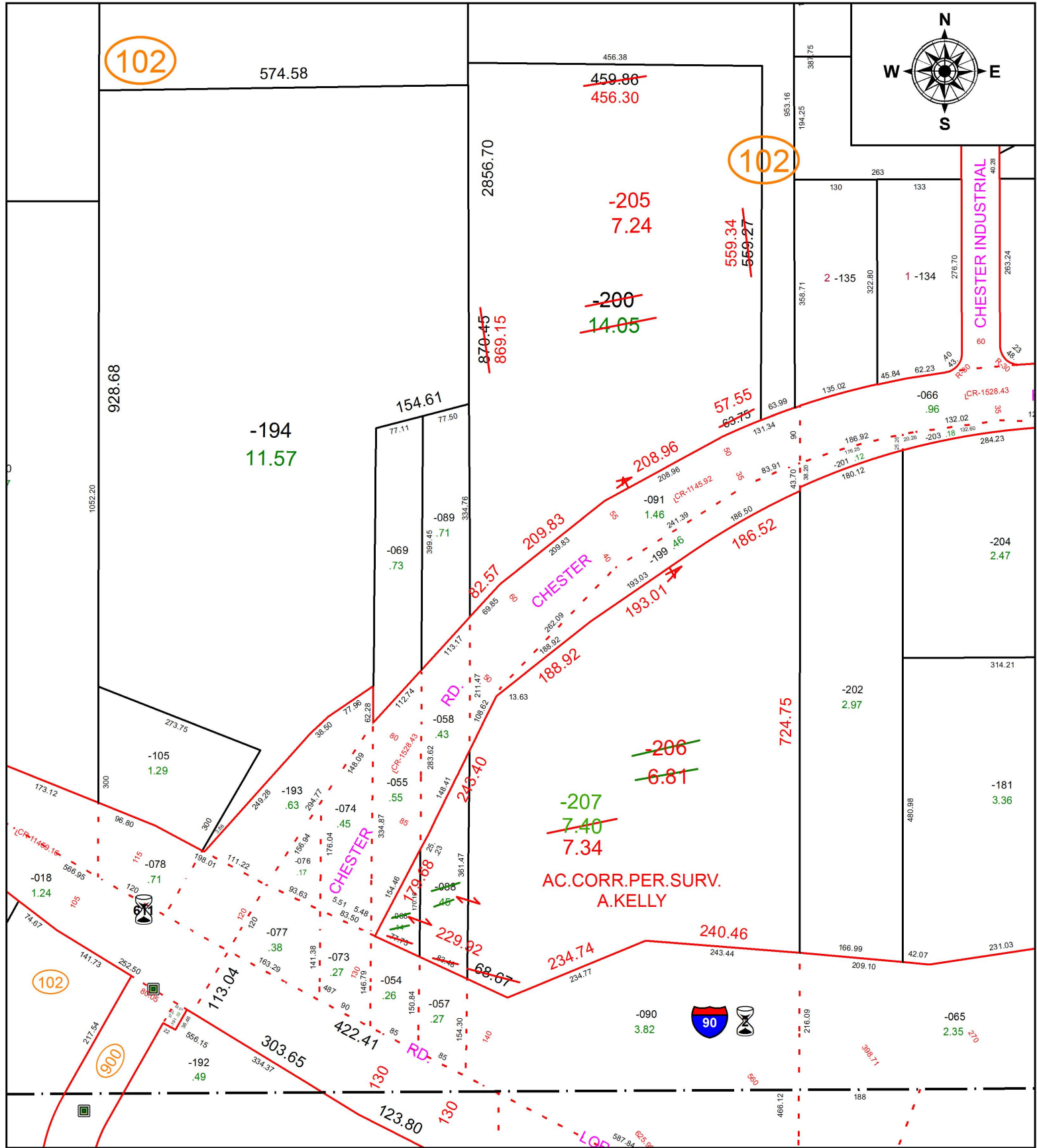


PARENT PARCEL: 04-00-004-102-200, -088, -068

CHILD PARCEL: 04-00-004-102-205 THRU -207

STARTING POINT: INTERSECTION OF C/L OF CHESTER RD, AND C/L OF S.R.611

16-03497



**SPLITS/DEEDS PROCESSED**  
 LORAIN COUNTY TAX MAP DEPARTMENT  
 226 MIDDLE AVE. ELYRIA, OH

SURVEYED BY: AMY M. KELLY  
 CLOSURE: 1: 319,249  
 MAP PAGE(S): 4-00-004  
 APPROVED BY: RRM DATE: 3-25-16  
 SCALE: 1" = 200 PRIOR INSTRUMENT: 20150560731