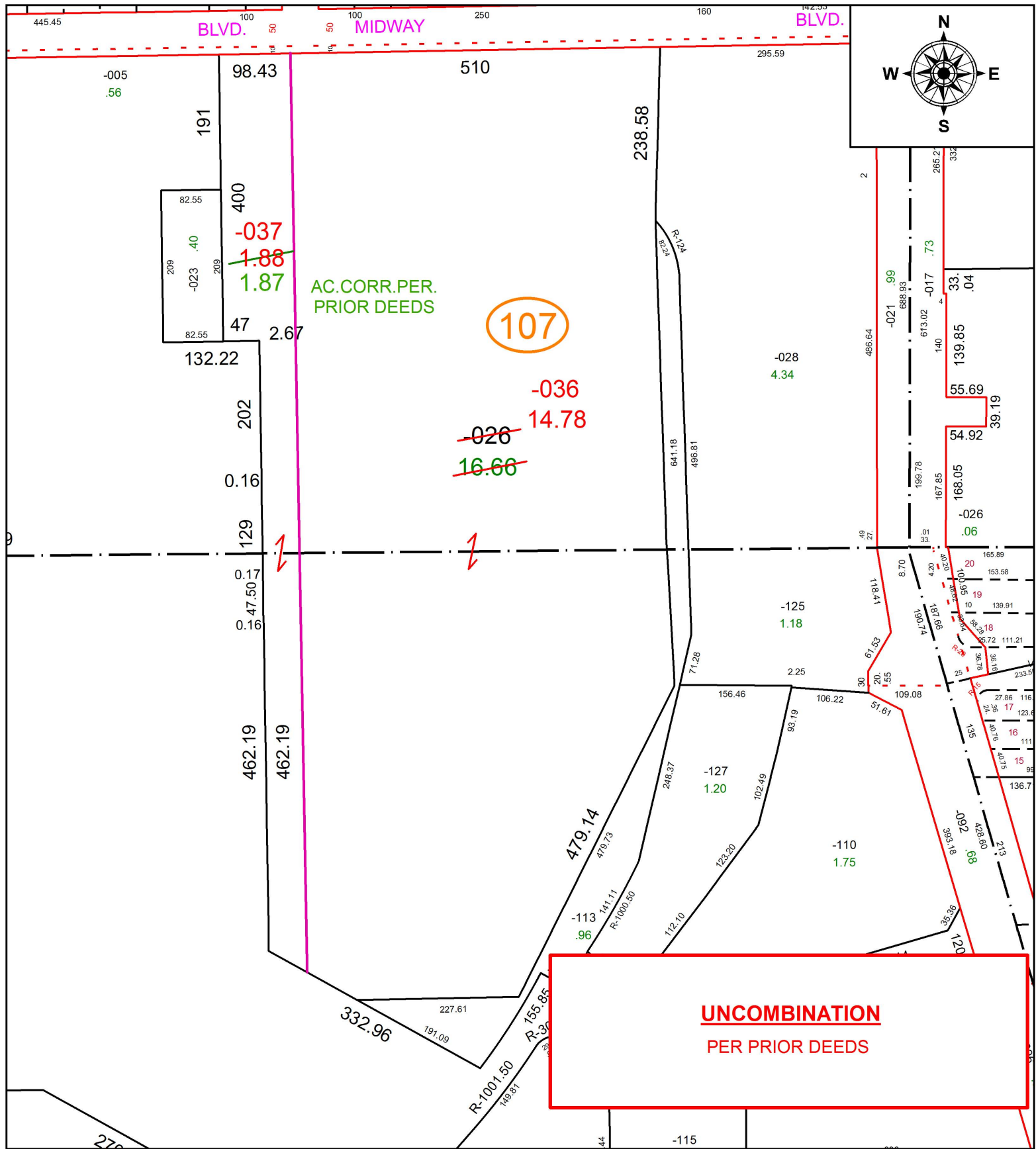


PARENT PARCEL: 06-24-031-107-026

CHILD PARCEL: 06-24-031-107-036, -037

STARTING POINT: EAST LINE OF S.R.57 AND 10 FEET SOUTH OF 50TH ST.

16-03495-U



SPLITS/DEEDS PROCESSED
 LORAIN COUNTY TAX MAP DEPARTMENT
 226 MIDDLE AVE. ELYRIA, OH

SURVEYED BY: RAY E. HOLLIS
 CLOSURE: 1: 255,814
 MAP PAGE(S): 6-47
 APPROVED BY: RRM DATE: 8-10-16
 SCALE: 1" = 175 PRIOR INSTRUMENT: 20160578942