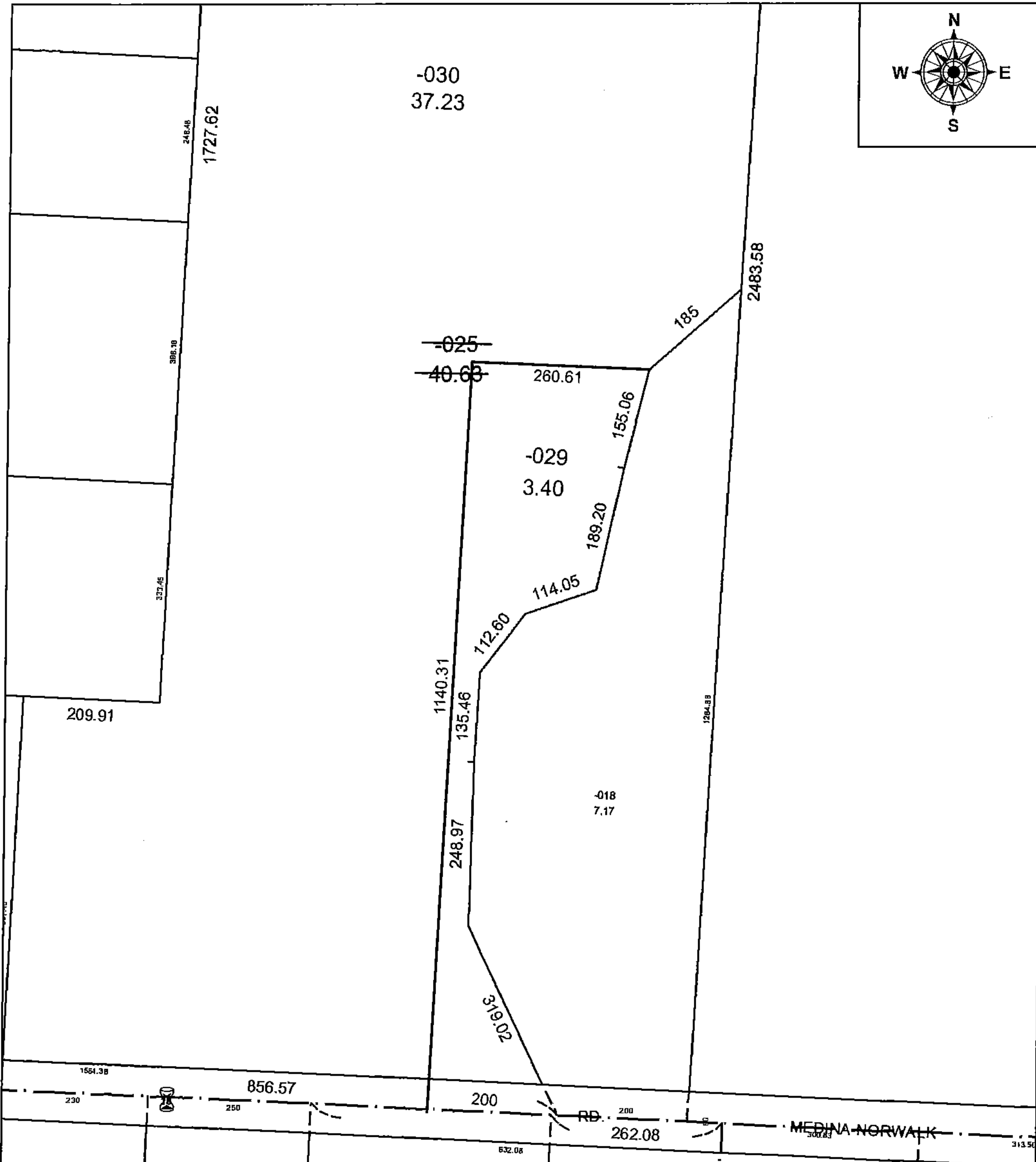
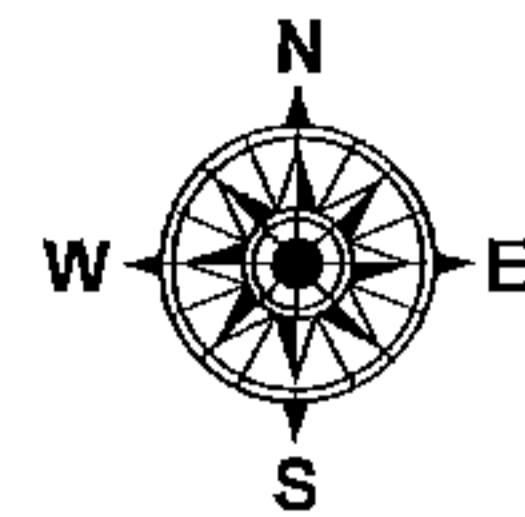


PARENT PARCEL: 17-07-006-000-025

CHILD PARCEL: 17-07-006-000-029, -030

STARTING POINT: CENTERLINES OF GORE ORPHANAGE RD & MEDINA NORWALK RD

16-03489



SPLITS/DEEDS PROCESSED
LORAIN COUNTY TAX MAP DEPARTMENT
226 MIDDLE AVE. ELYRIA, OH

SURVEYED BY: DANIEL J NICHOLS
CLOSURE: 1:131711
MAP PAGE(S): 17-A
APPROVED BY: JAH DATE: 03/14/2016
SCALE: 1 in = 196 ft PRIOR INSTRUMENT: 20160572734