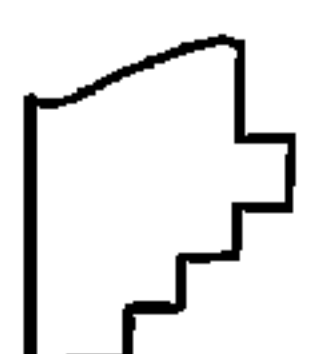
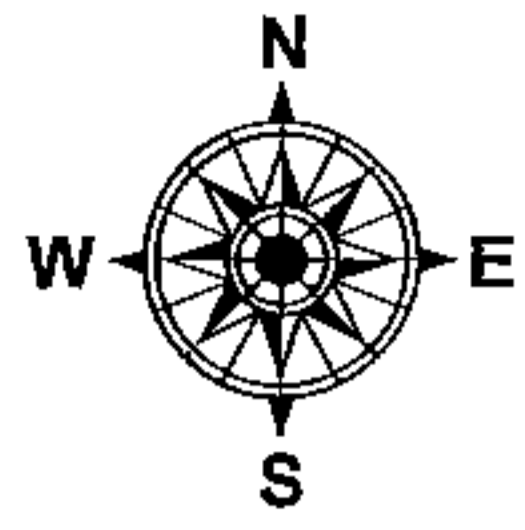
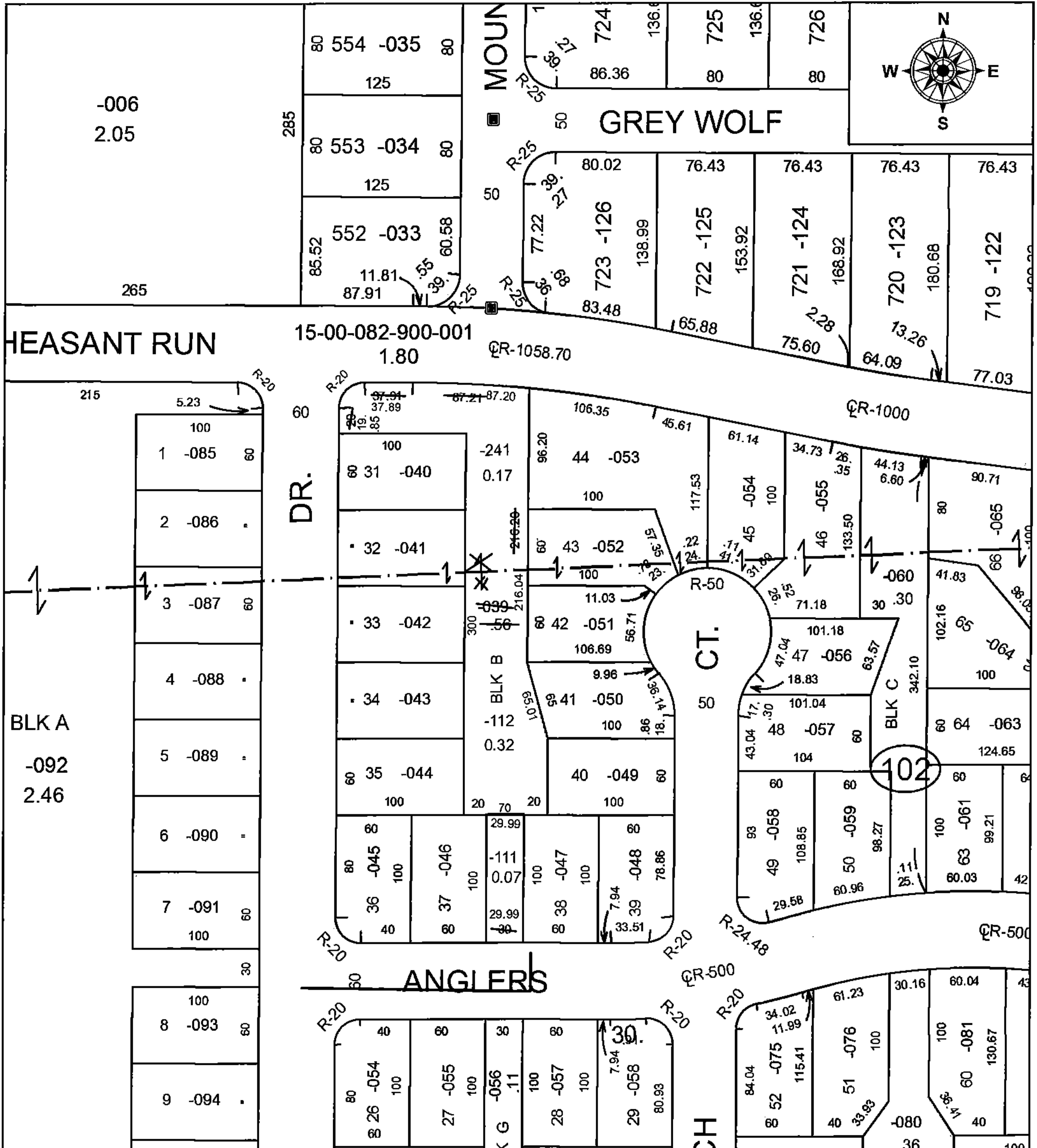


PARENT PARCEL: 15-00-099-102-039

CHILD PARCEL: 15-00-099-102-111, -112 15-00-082-000-241

STARTING POINT: INTERSECTION OF THE CENTERLINES OF SUNSET DR & ANGLERS LN

16-03485



**SPLITS/DEEDS PROCESSED**  
 LORAIN COUNTY TAX MAP DEPARTMENT  
 226 MIDDLE AVE. ELYRIA, OH

SURVEYED BY: THOMAS SIMON  
 CLOSURE: 1: 33,000  
 MAP PAGE(S): 15-00-099  
 APPROVED BY: JAH DATE: 3/8/2016  
 SCALE: 1 in = 100 ft PRIOR INSTRUMENT: 20150554268