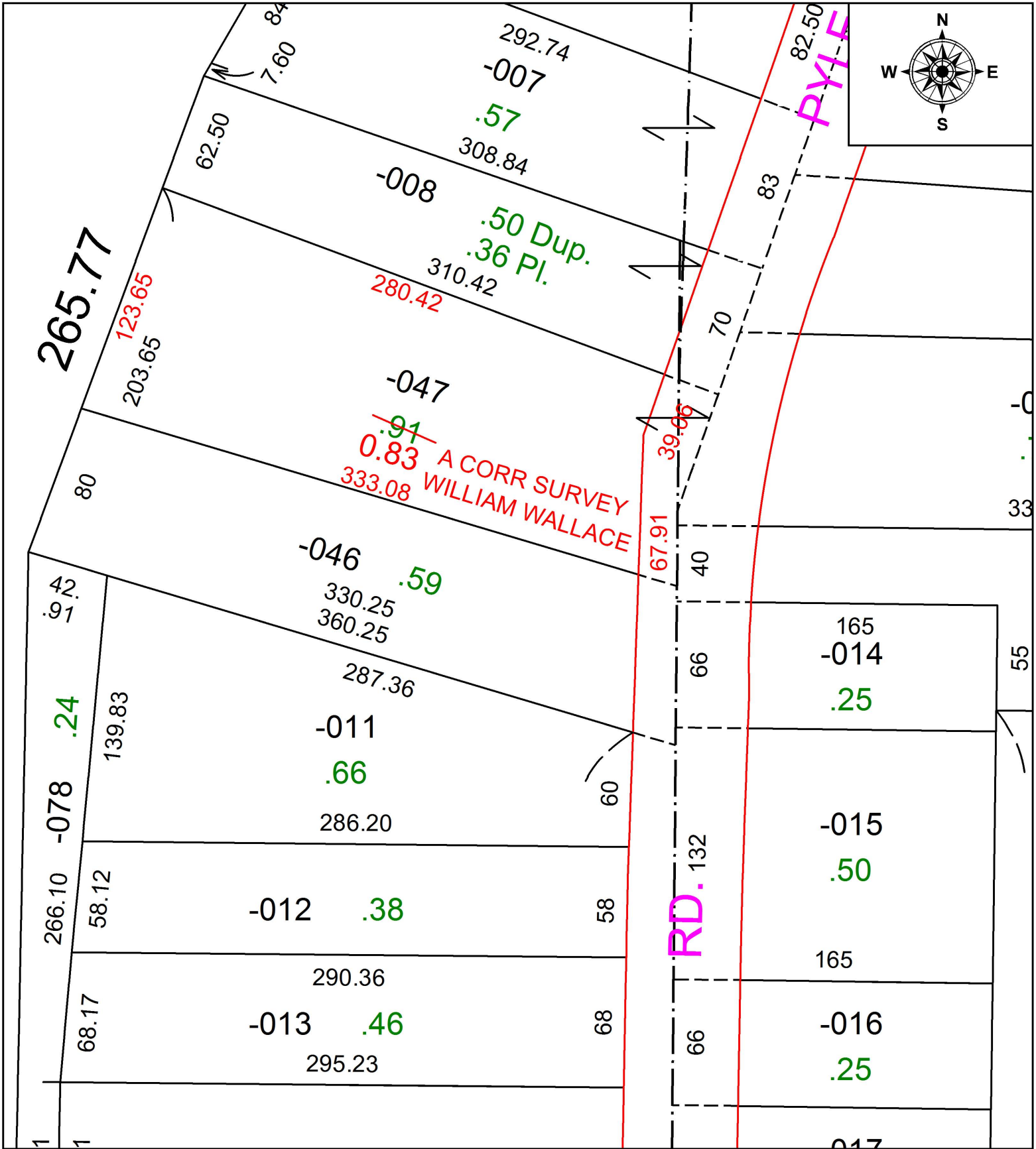


PARENT PARCEL: 05-00-009-000-047

CHILD PARCEL: SAME

STARTING POINT: CENTERLINE OF BUCKEYE ST & NORTH LAKE ST

16-03481-X



SPLITS/DEEDS PROCESSED
 LORAIN COUNTY TAX MAP DEPARTMENT
 226 MIDDLE AVE. ELYRIA, OH

SURVEYED BY: WILLIAM WALLACE
 CLOSURE: 1:137049
 MAP PAGE(S): 05-00-009
 APPROVED BY: JAH DATE: 7/7/2016
 SCALE: 1 in = 67 ft PRIOR INSTRUMENT: 20150568512