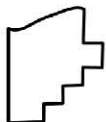
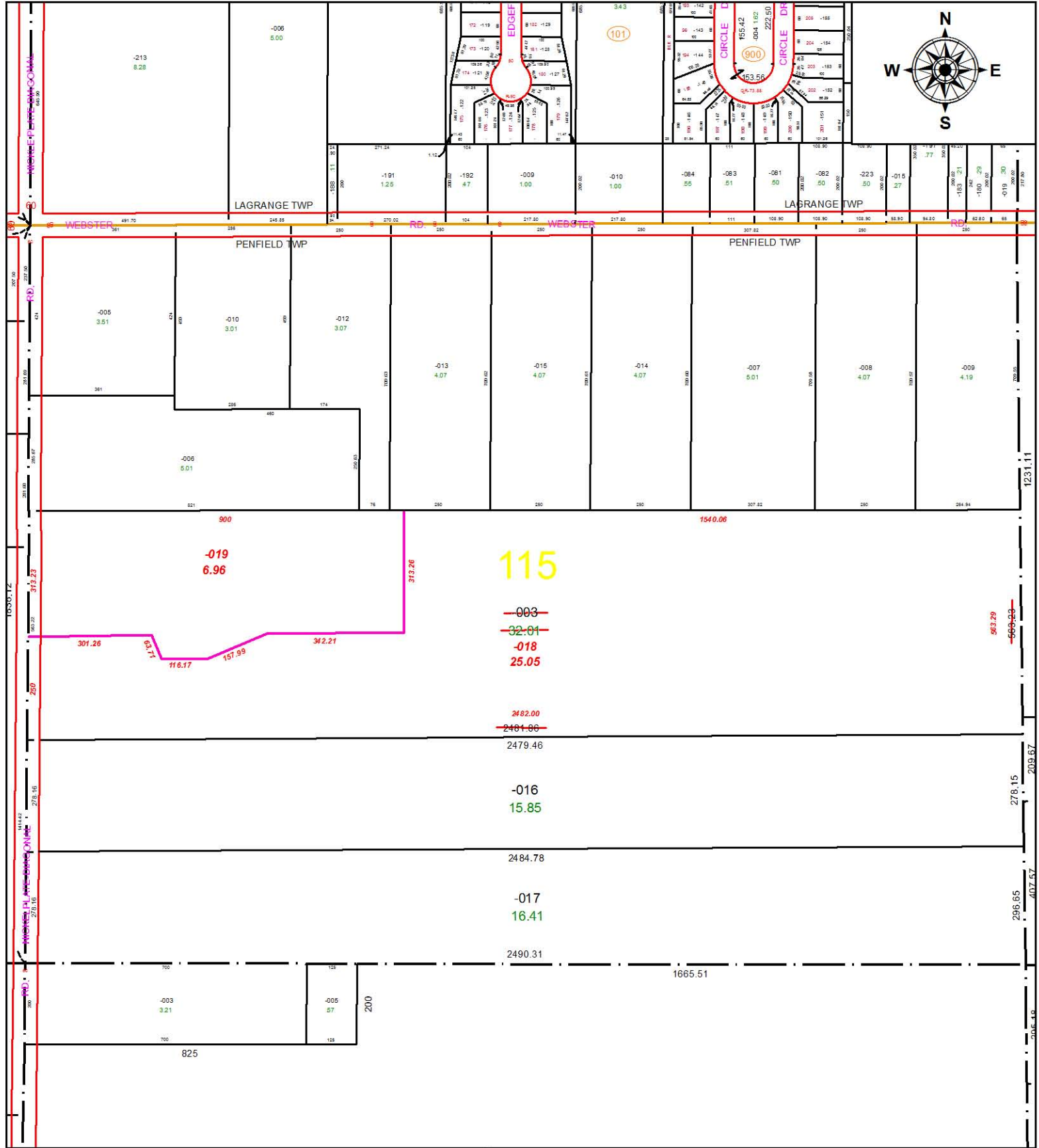


PARENT PARCEL: 19-06-115-000-003

CHILD PARCEL: 19-06-115-000-018, -019

STARTING POINT: CL INTERSECTION OF WEBSTER RD & NICKEL PLATE-DIAGONAL RD

16-03480



SPLITS/DEEDS PROCESSED
 LORAIN COUNTY TAX MAP DEPARTMENT
 226 MIDDLE AVE. ELYRIA, OH

SURVEYED BY: HOWARD SELEE
CLOSURE: 1: 33,000
MAP PAGE(S): 19-A
APPROVED BY: JAH **DATE:** 2/2/2016
SCALE: 1 in = 317 ft **PRIOR INSTRUMENT:** 19990604771