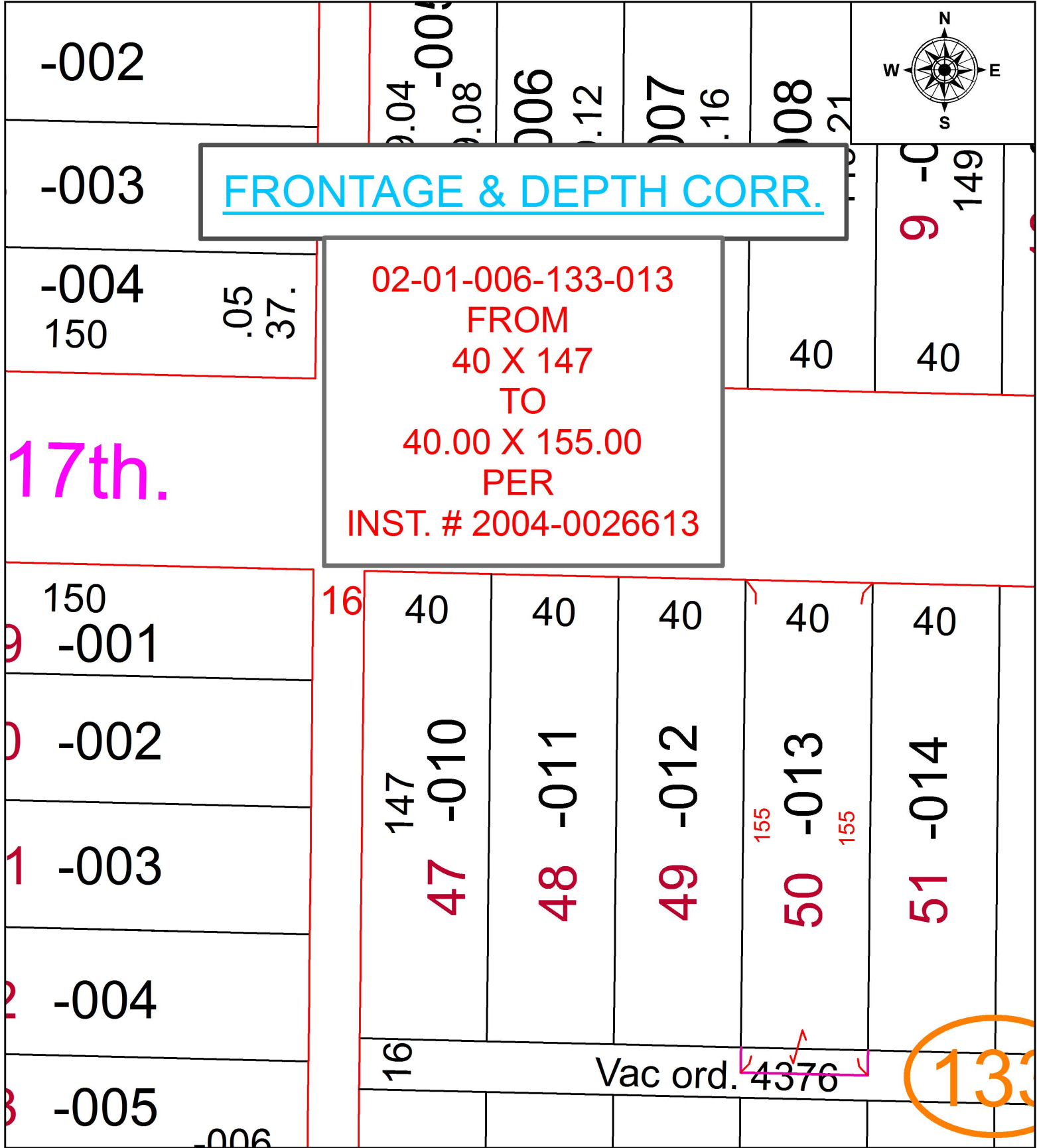


PARENT PARCEL: 02-01-006-133-013

CHILD PARCEL: XX-XX-XXX-XXX-XXX

STARTING POINT: BEING SUBLLOT 50 AND THE VACATED PORTION OF A 16' ALLEY PER ORD. # 4376

16-03476-A

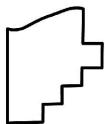


FRONTAGE & DEPTH CORR.

02-01-006-133-013
FROM
40 X 147
TO
40.00 X 155.00
PER
INST. # 2004-0026613

17th.

133



SPLITS/DEEDS PROCESSED
LORAIN COUNTY TAX MAP DEPARTMENT
226 MIDDLE AVE. ELYRIA, OH

SURVEYED BY:	NA
CLOSURE:	NA
MAP PAGE(S):	02-01-006
APPROVED BY:	TJS DATE: 6/28/16
SCALE:	1" = 40'
PRIOR INSTRUMENT:	2004-0026613