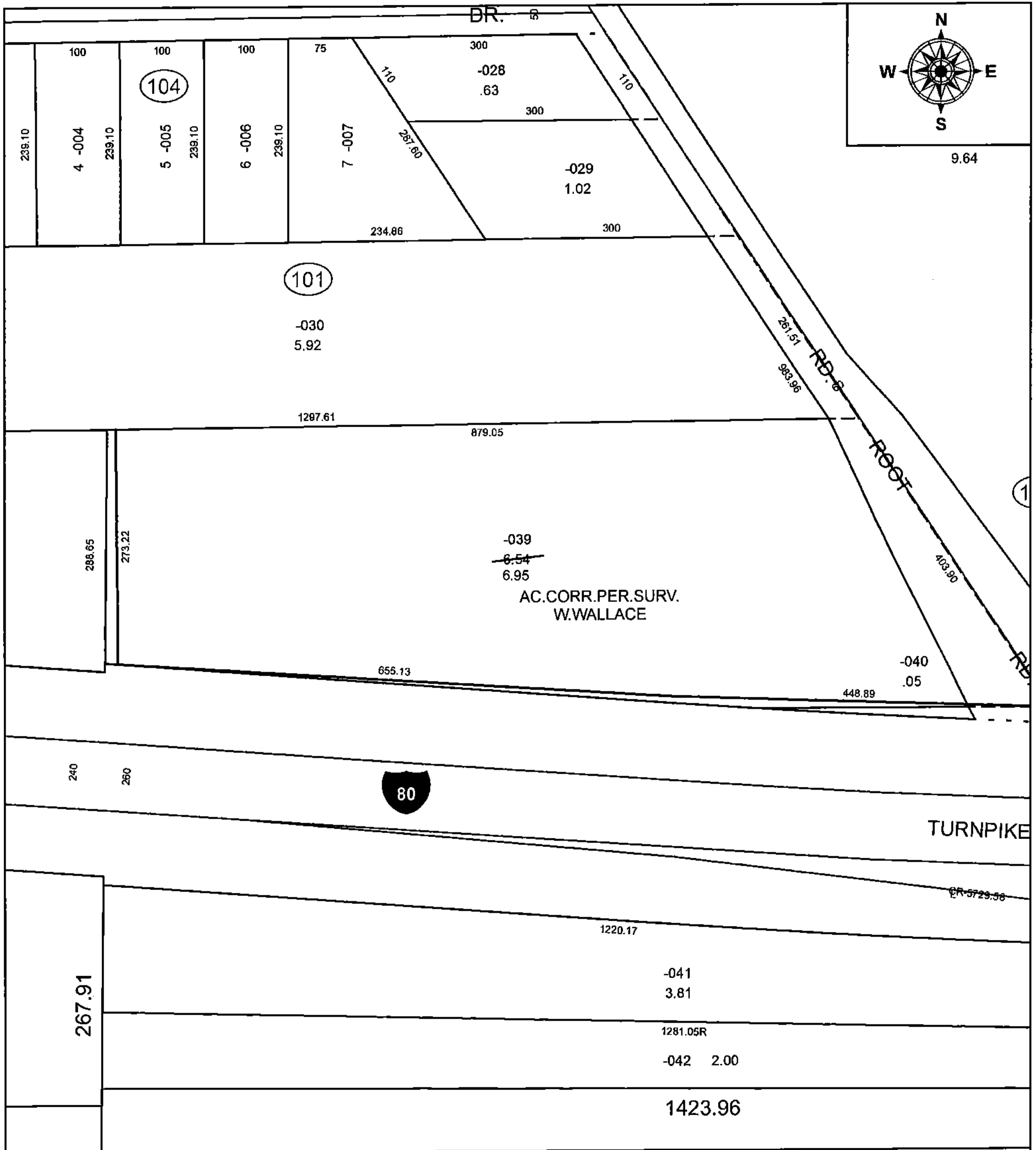


PARENT PARCEL: 07-00-022-101-039

CHILD PARCEL: XX-XX-XXX-XXX-XXX

STARTING POINT: INTERSECTION OF C/L OF OHIO TURNPIKE AND C/L OF ROOT RD.

16-03471-A



**SPLITS/DEEDS PROCESSED**  
 LORAIN COUNTY TAX MAP DEPARTMENT  
 226 MIDDLE AVE. ELYRIA, OH

SURVEYED BY: WILLIAM R. WALLACE  
 CLOSURE: 1:521,078  
 MAP PAGE(S): 7-00-022  
 APPROVED BY: RRM DATE: 6-20-16  
 SCALE: 1" = 150 PRIOR INSTRUMENT: 20140526341