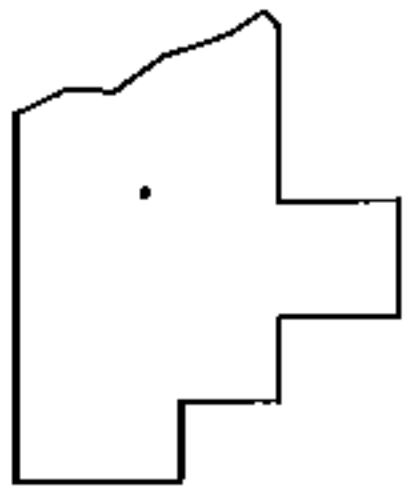
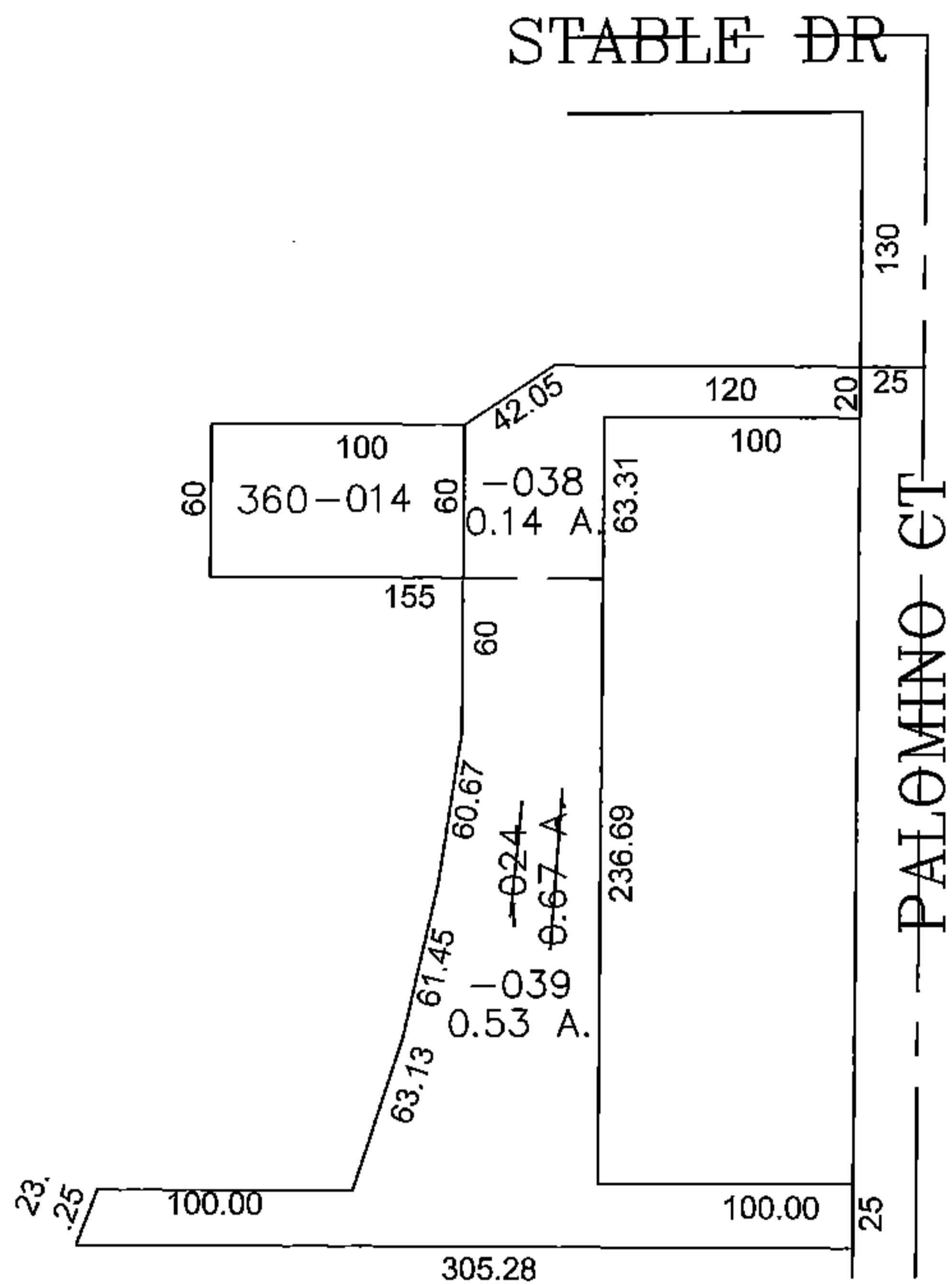
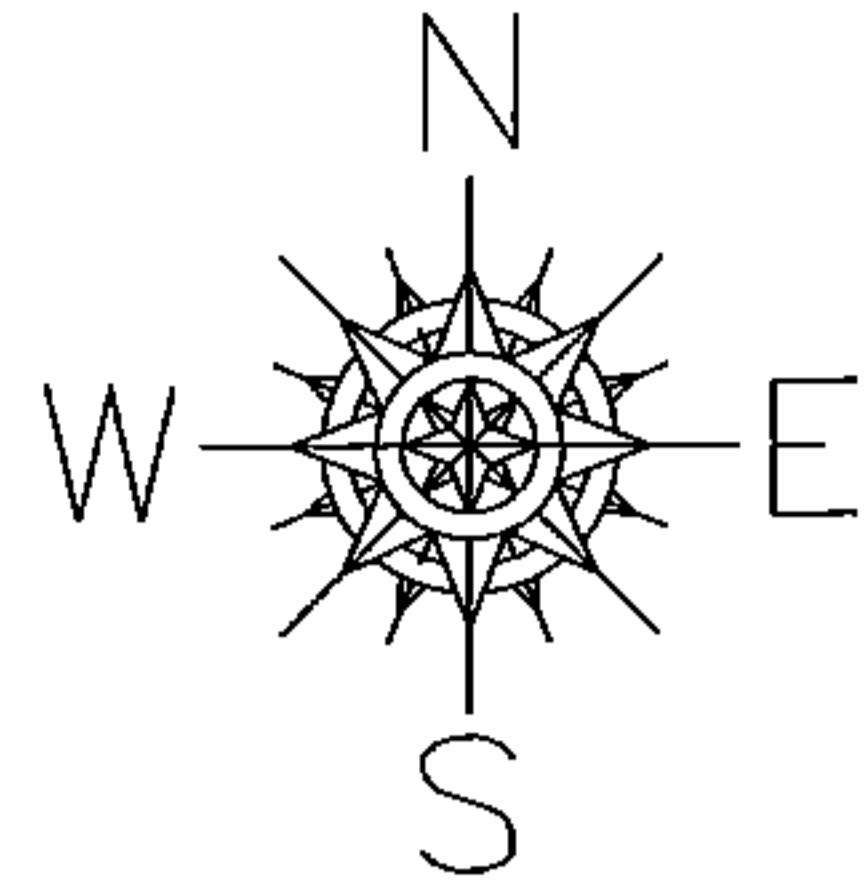


PARENT PARCEL: 15-00-098-107-024, -014
 CHILD PARCEL: 15-00-098-107-038, -039, -014 (ST)
 STARTING POINT: CENTERLINE OF STABLE DR & PALOMINO CT

16-03467



SPLITS/DEEDS PROCESSED

LORAIN COUNTY TAX MAP DEPARTMENT
 226 MIDDLE AVE. ELYRIA, OHIO

SURVEYED BY: THOMAS SIMON
 CLOSURE: 0.00 : 10.000
 MAP PAGE(S): 15-00-098
 APPROVED BY: JAH DATE: 1/6/2016
 SCALE: 1" = 100 PRIOR INSTRUMENT: 20150554268