

PARENT PARCEL: 07-00-037-000-535

CHILD PARCEL: XX-XX-XXX-XXX-XXX

STARTING POINT: CL OF BENDER RD. & N.W. CORNER OF O.L. 37

16-03465-A

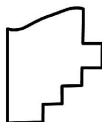
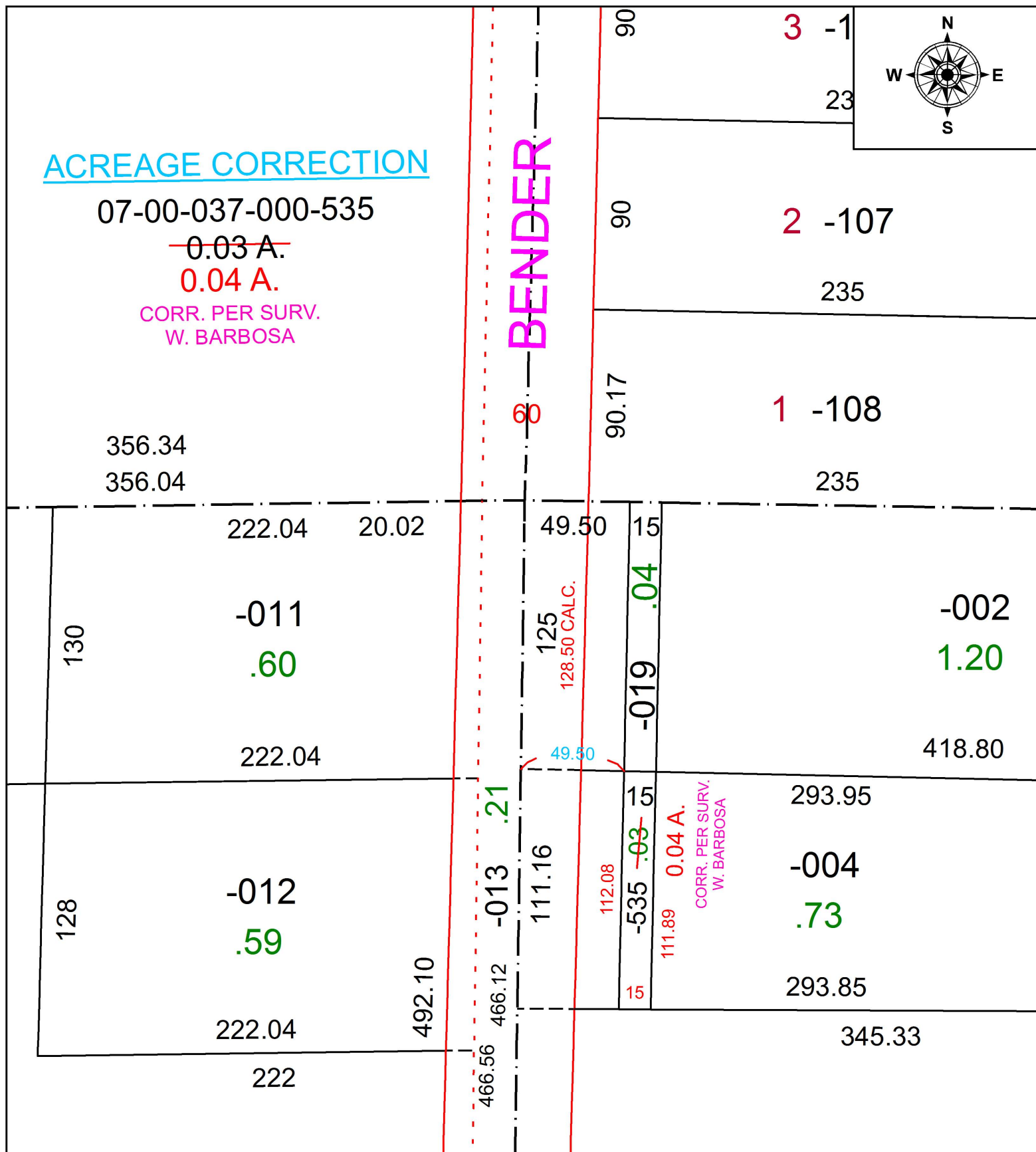
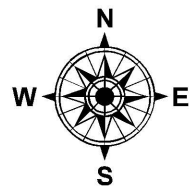
ACREAGE CORRECTION

07-00-037-000-535

~~0.03 A.~~

0.04 A.

CORR. PER SURV.
W. BARBOSA



SPLITS/DEEDS PROCESSED
LORAIN COUNTY TAX MAP DEPARTMENT
226 MIDDLE AVE. ELYRIA, OH

SURVEYED BY: WILFREDO BARBOSA
 CLOSURE: 1: 54,000
 MAP PAGE(S): 07-00-037
 APPROVED BY: TJS DATE: 6/9/16
 SCALE: 1" = 60' PRIOR INSTRUMENT: DV 1416/312