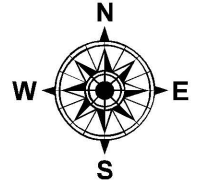
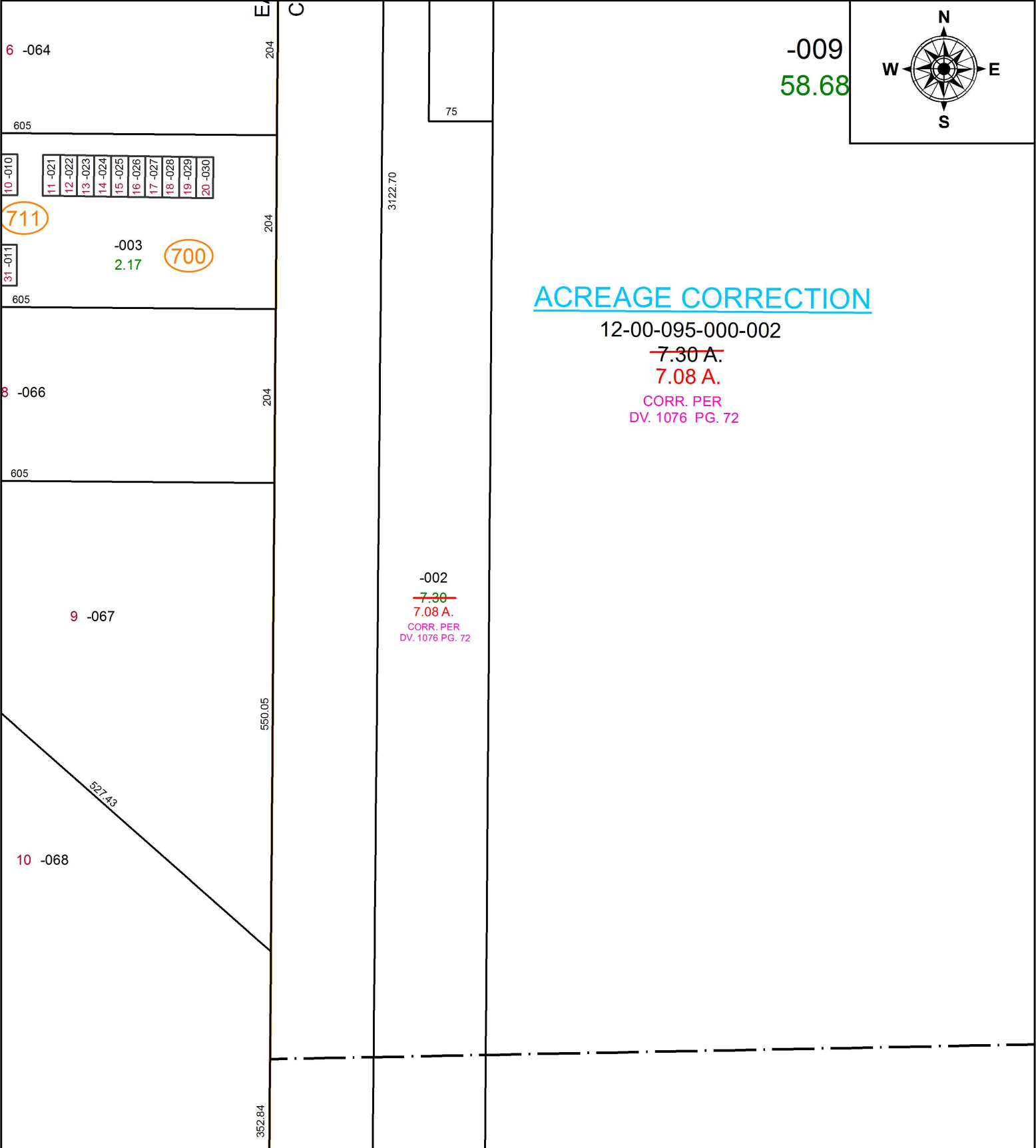


PARENT PARCEL: 12-00-095-000-002

CHILD PARCEL: XX-XX-XXX-XXX-XXX

STARTING POINT: CL OF ELYRIA-TWINSBURG RD. (S.R. 82) & N.W. CORNER OF O.L. 95

16-03464-C



SPLITS/DEEDS PROCESSED
LORAIN COUNTY TAX MAP DEPARTMENT
226 MIDDLE AVE. ELYRIA, OH

SURVEYED BY: NA
CLOSURE: NA
MAP PAGE(S): 12-00-095
APPROVED BY: TJS DATE: 6/7/16
SCALE: 1" = 200 PRIOR INSTRUMENT: DV 1076/72