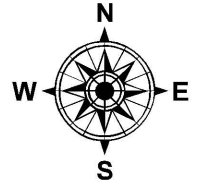


PARENT PARCEL: 02-01-003-110-007

CHILD PARCEL: XX-XX-XXX-XXX-XXX

STARTING POINT: INTERSECTION OF SOUTH LINE OF E. ST. AND EAST LINE OF COLORADO AVE.

16-03460-X



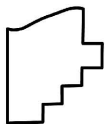
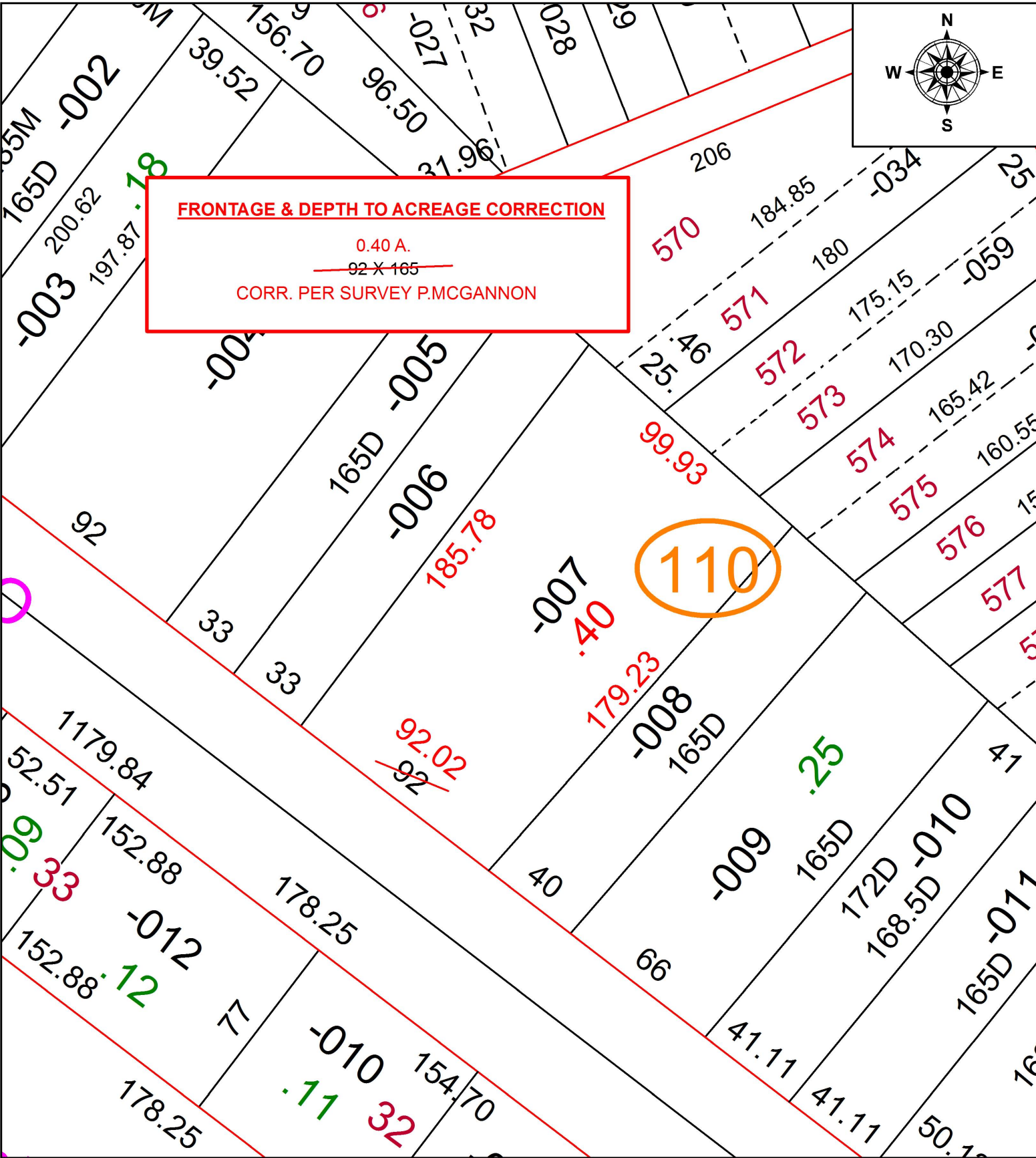
**FRONTAGE & DEPTH TO ACREAGE CORRECTION**

0.40 A.

~~92 X 165~~

CORR. PER SURVEY P.MCGANNON

110



**SPLITS/DEEDS PROCESSED**

LORAIN COUNTY TAX MAP DEPARTMENT  
226 MIDDLE AVE. ELYRIA, OH

SURVEYED BY: PATRICK A. MCGANNON

CLOSURE: 1:56,105

MAP PAGE(S): 2-01-003

APPROVED BY: RRM DATE: 6-2-16

SCALE: 1" = 50 PRIOR INSTRUMENT: 20150563733