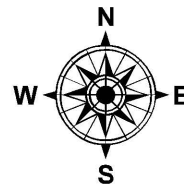


PARENT PARCEL: 12-00-032-000-004

CHILD PARCEL: XX-XX-XXX-XXX-XXX

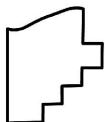
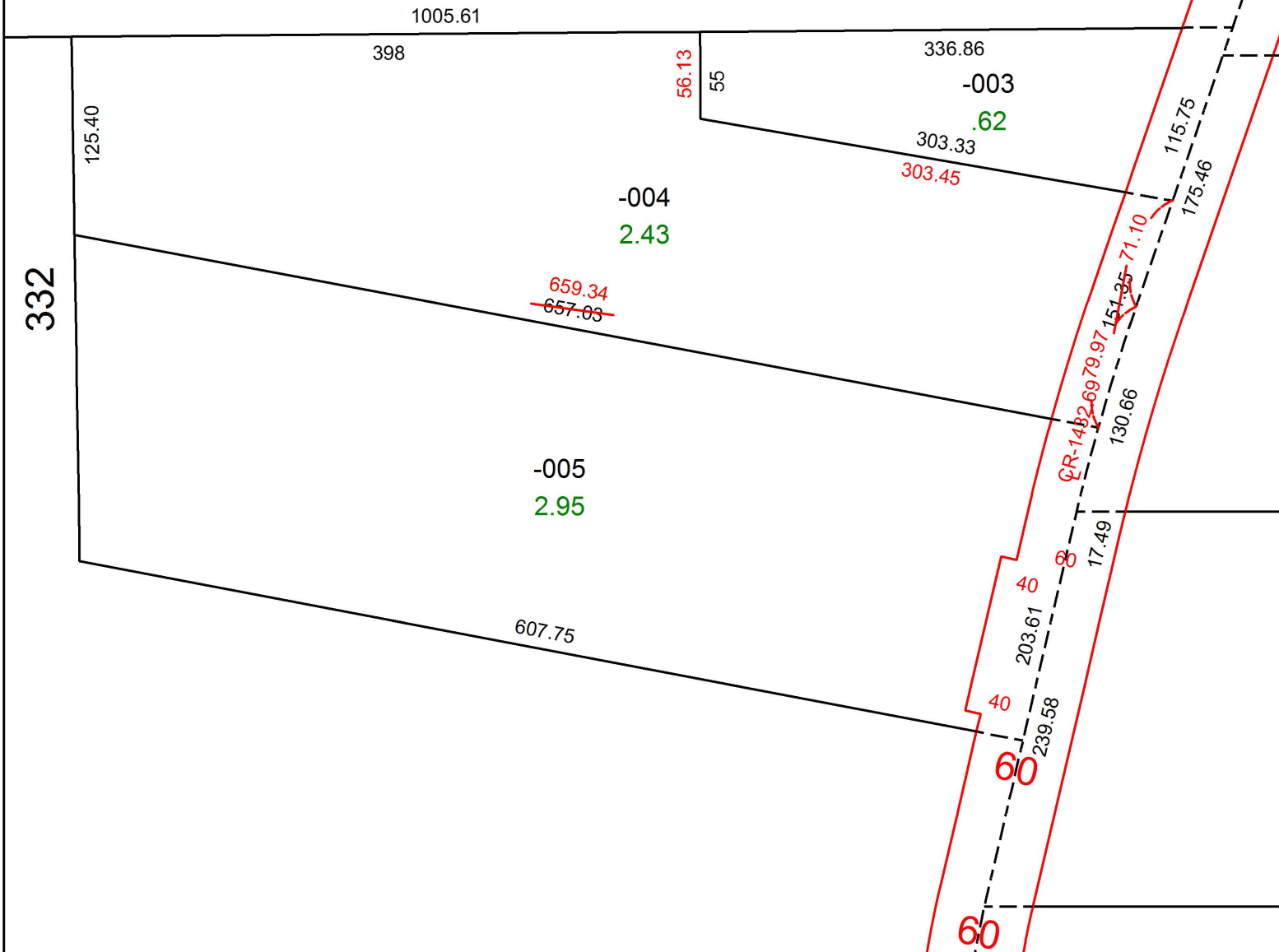
STARTING POINT: NORTHWEST CORNER OF O.L.32

16-03459-D



-050

MAP CORRECTION ONLY
CORR. PER SURVEY E.DUDLEY III



SPLITS/DEEDS PROCESSED
LORAIN COUNTY TAX MAP DEPARTMENT
226 MIDDLE AVE. ELYRIA, OH

SURVEYED BY: EDWARD B. DUDLEY III
CLOSURE: 1: 182,054
MAP PAGE(S): 12-00-032
APPROVED BY: RRM DATE: 5-31-16
SCALE: 1" = 100 PRIOR INSTRUMENT: 20120415582