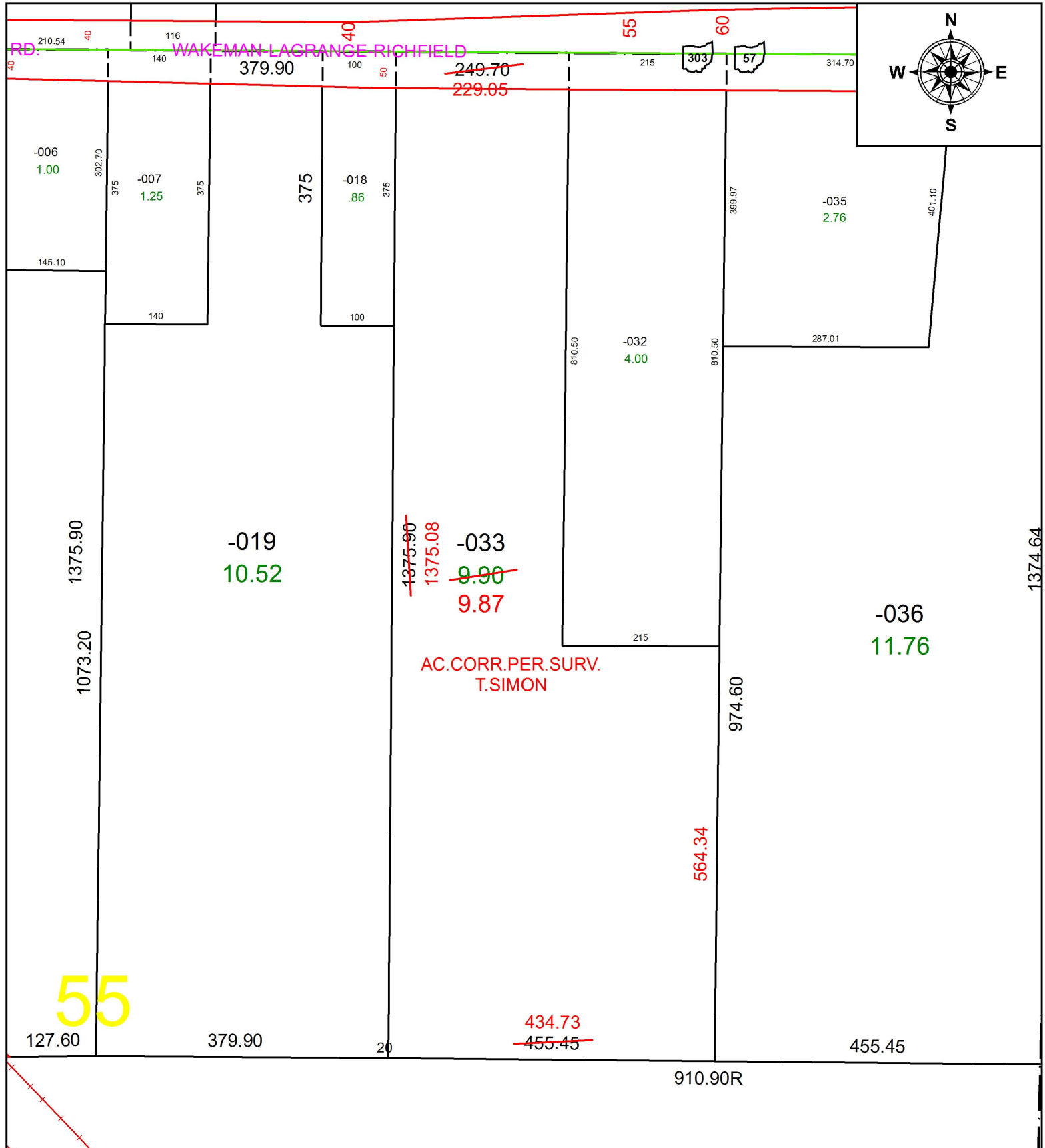


PARENT PARCEL: 16-00-055-000-033

CHILD PARCEL: XX-XX-XXX-XXX-XXX

STARTING POINT: INTERSECTION OF C/L OF S.R.83 AND C/L OF S.R.303

16-03457-X



**SPLITS/DEEDS PROCESSED**  
 LORAIN COUNTY TAX MAP DEPARTMENT  
 226 MIDDLE AVE. ELYRIA, OH

SURVEYED BY: THOMAS A. SIMON  
 CLOSURE: 1: 523,309  
 MAP PAGE(S): 16-00-055  
 APPROVED BY: RRM DATE: 5-25-16  
 SCALE: 1" = 175 PRIOR INSTRUMENT: 20120429255