

PARENT PARCEL: 13-11-017-000-029 & -033

CHILD PARCEL: NA

STARTING POINT: CL OF HAIGH RD. & EAST LINE OF O.L. 17

16-03455-C

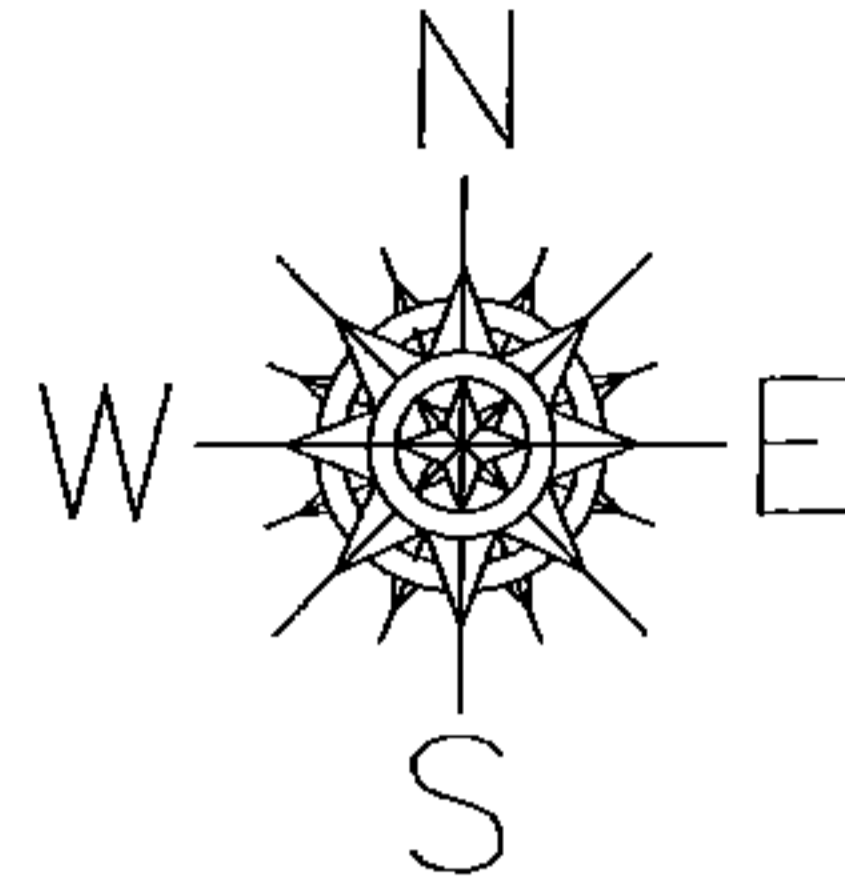
DROP FROM DUPLICATE

~~13-11-017-000-029~~

~~0.74 A.~~

COMBINED INTO -033

INST. # 2000-0709580



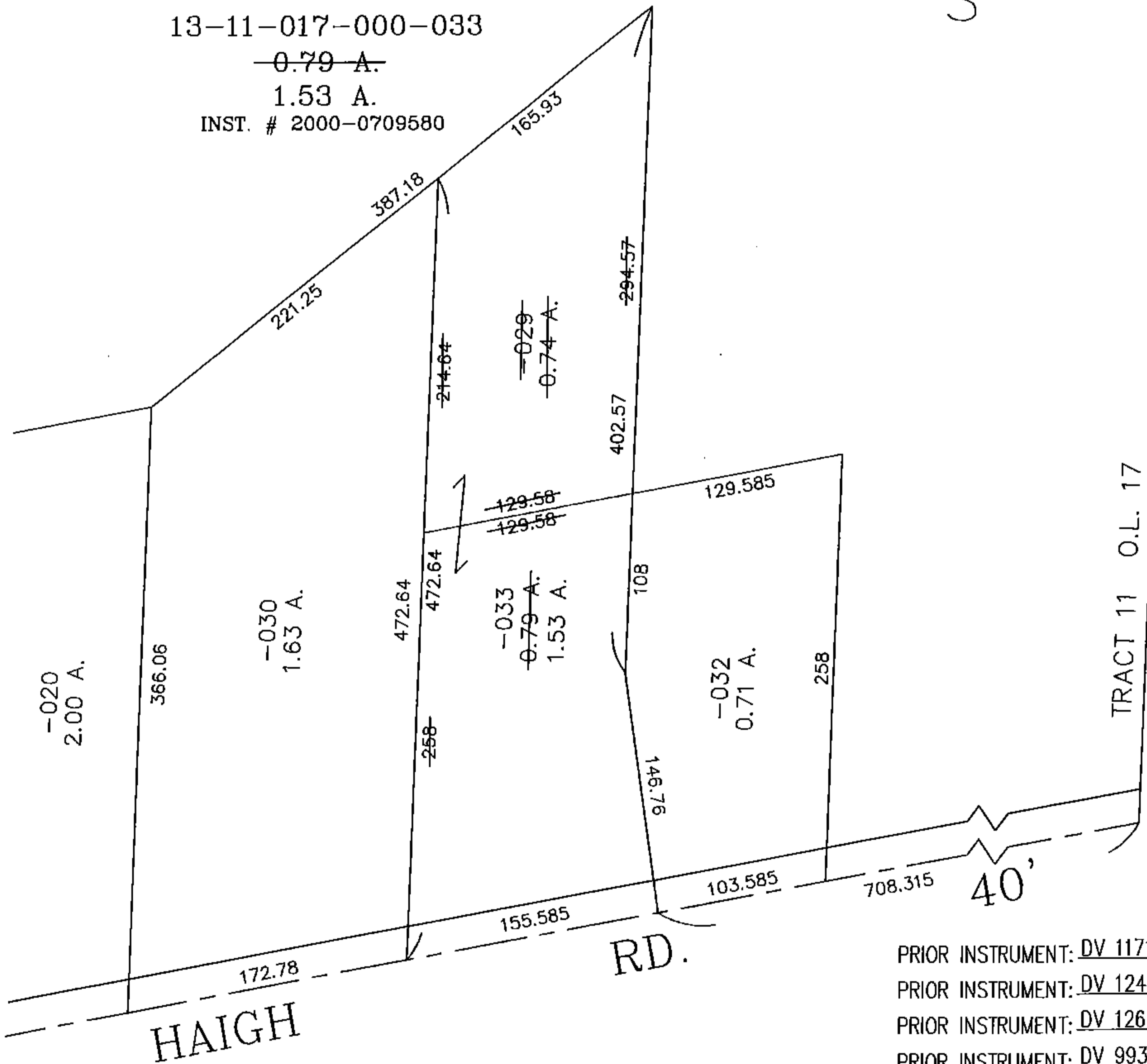
ACREAGE CORRECTION

13-11-017-000-033

~~0.79 A.~~

1.53 A.

INST. # 2000-0709580

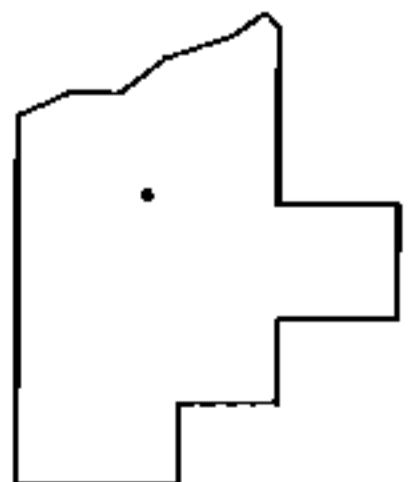


PRIOR INSTRUMENT: DV 1171/627

PRIOR INSTRUMENT: DV 1246/338

PRIOR INSTRUMENT: DV 1269/482

PRIOR INSTRUMENT: DV 993/285



SPLITS/DEEDS PROCESSED

LORAIN COUNTY TAX MAP DEPARTMENT
226 MIDDLE AVE. ELYRIA, OHIO

SURVEYED BY: SUSAN L. EICHHORN

CLOSURE: 0.01 : 10.000

MAP PAGE(S): 13-11-017

APPROVED BY: TJS DATE: 5/19/16

SCALE: 1" = 100'