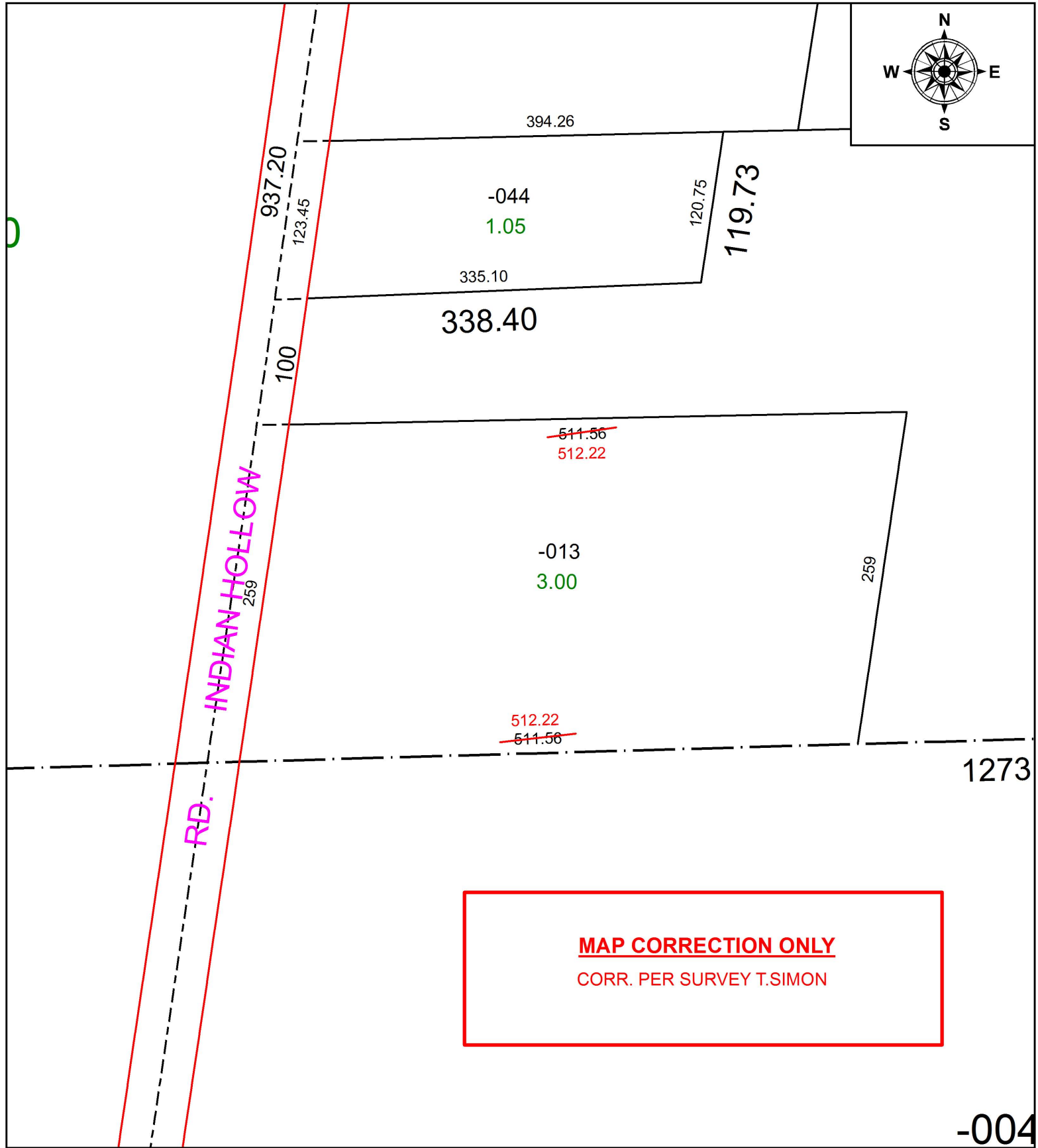


PARENT PARCEL: 15-00-010-000-013

CHILD PARCEL: XX-XX-XXX-XXX-XXX

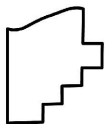
STARTING POINT: INTERSECTION OF C/L OF INDIAN HOLLOW RD. AND C/L OF CROOK ST,

16-03453-D



MAP CORRECTION ONLY
CORR. PER SURVEY T.SIMON

-004



SPLITS/DEEDS PROCESSED
LORAIN COUNTY TAX MAP DEPARTMENT
226 MIDDLE AVE. ELYRIA, OH

SURVEYED BY: THOMAS A. SIMON
CLOSURE: 1: 2147483648
MAP PAGE(S): 15-D
APPROVED BY: RRM DATE: 5-17-16
SCALE: 1" = 100 PRIOR INSTRUMENT: 20030894772