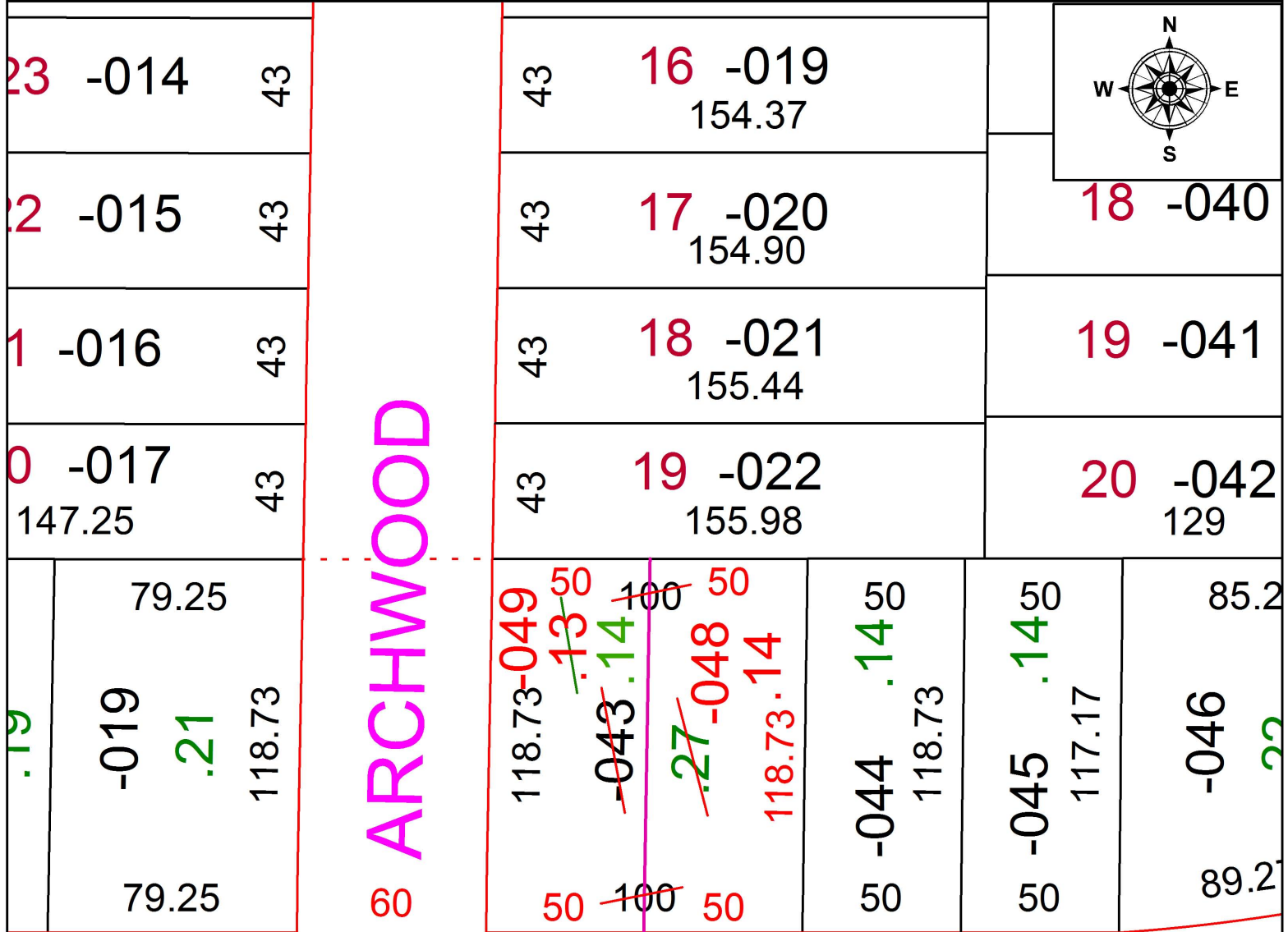


PARENT PARCEL: 02-02-028-103-043

CHILD PARCEL: 02-02-028-103-048, -049

STARTING POINT: INTERSECTION OF NORTH LINE OF 11TH ST. AND EAST LINE OF ARCHWOOD AVE.

16-03448-U



UNCOMBINATION

~~02-02-028-103-043~~

~~0.27 A.~~

02-02-028-103-048

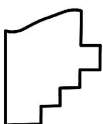
0.14 A.

02-02-028-103-049

~~0.13 A.~~

0.14 A.

PER SURV. BY R. HOLLIS



SPLITS/DEEDS PROCESSED

LORAIN COUNTY TAX MAP DEPARTMENT
226 MIDDLE AVE. ELYRIA, OH

SURVEYED BY: RAY E. HOLLIS

CLOSURE: 1: 230,567

MAP PAGE(S): 2-02-028

APPROVED BY: RRM DATE: 5-13-16

SCALE: 1" = 50 PRIOR INSTRUMENT: DV 1067/152