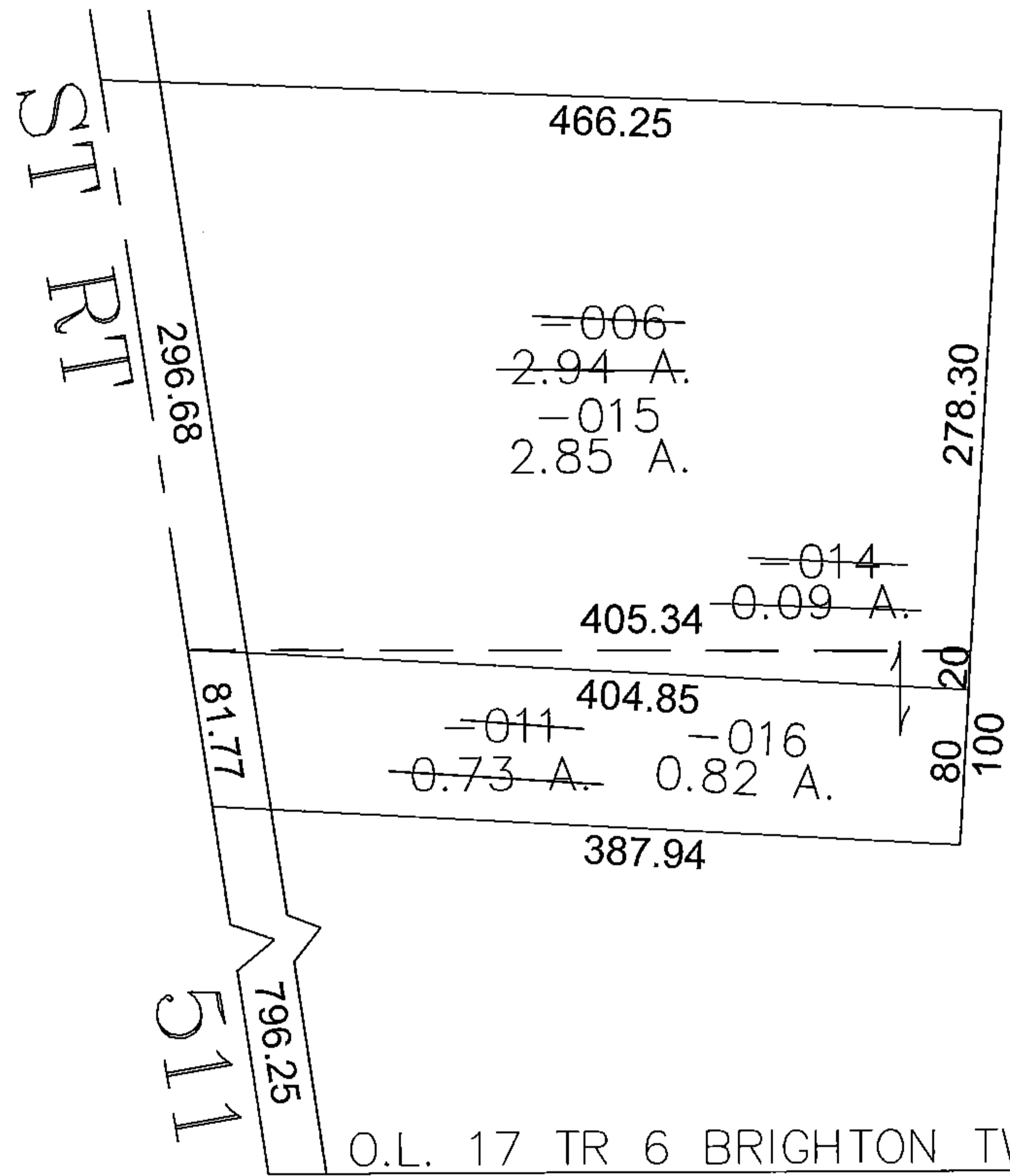
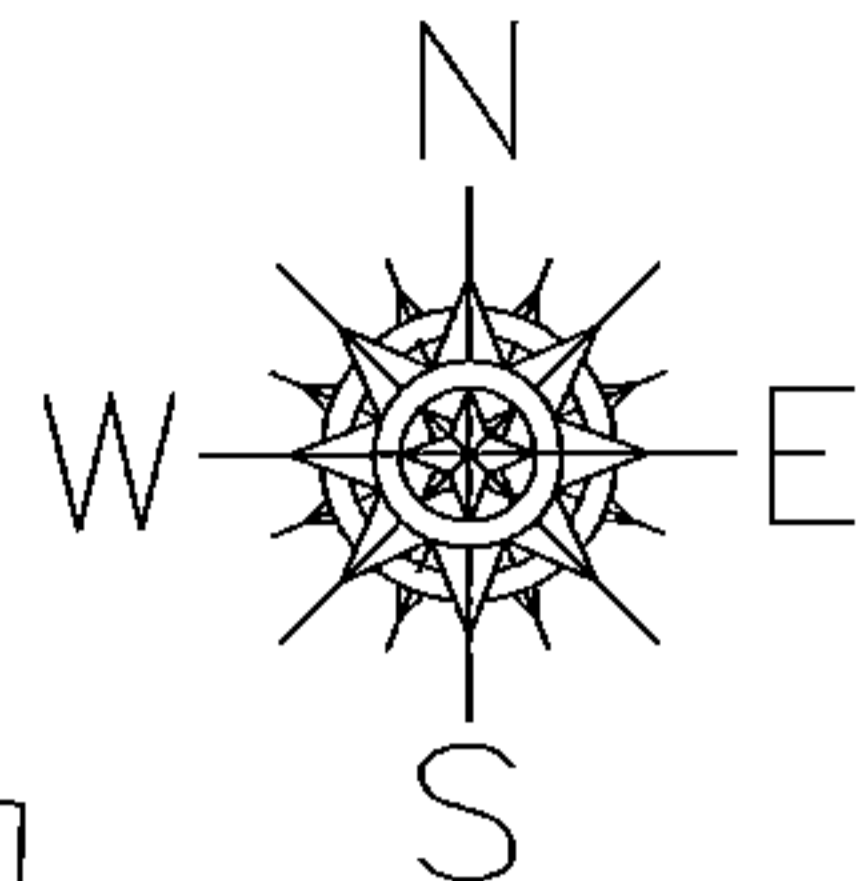
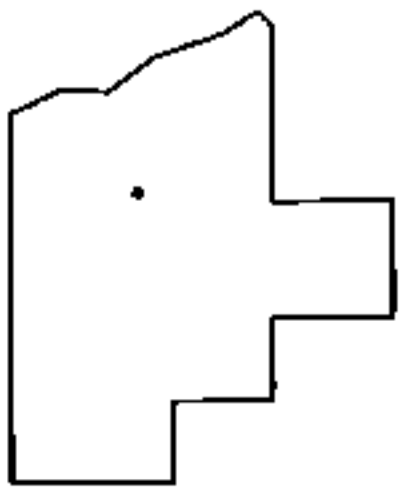


PARENT PARCEL: 17-06-017-000-006, -011
CHILD PARCEL: 17-06-017-000-014, -015, -016
STARTING POINT: CENTERLINE OF ST RT 511 & O.L. 17 TR 6 BRIGHTON TWP

15-03446



O.L. 17 TR 6 BRIGHTON TWP
O.L. 16 TR 6 ROCHESTER TWP



SPLITS/DEEDS PROCESSED

LORAIN COUNTY TAX MAP DEPARTMENT
226 MIDDLE AVE. ELYRIA, OHIO

SURVEYED BY: THOMAS SNEZEK
CLOSURE: 0.00 : 10.000
MAP PAGE(S): 17-A
APPROVED BY: JAH DATE: 12/2/2015
SCALE: 1"= 100 PRIOR INSTRUMENT: 20010767024