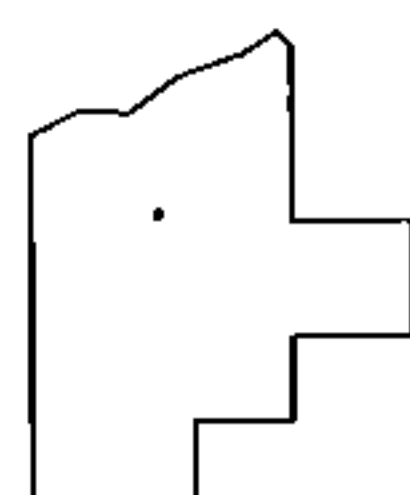
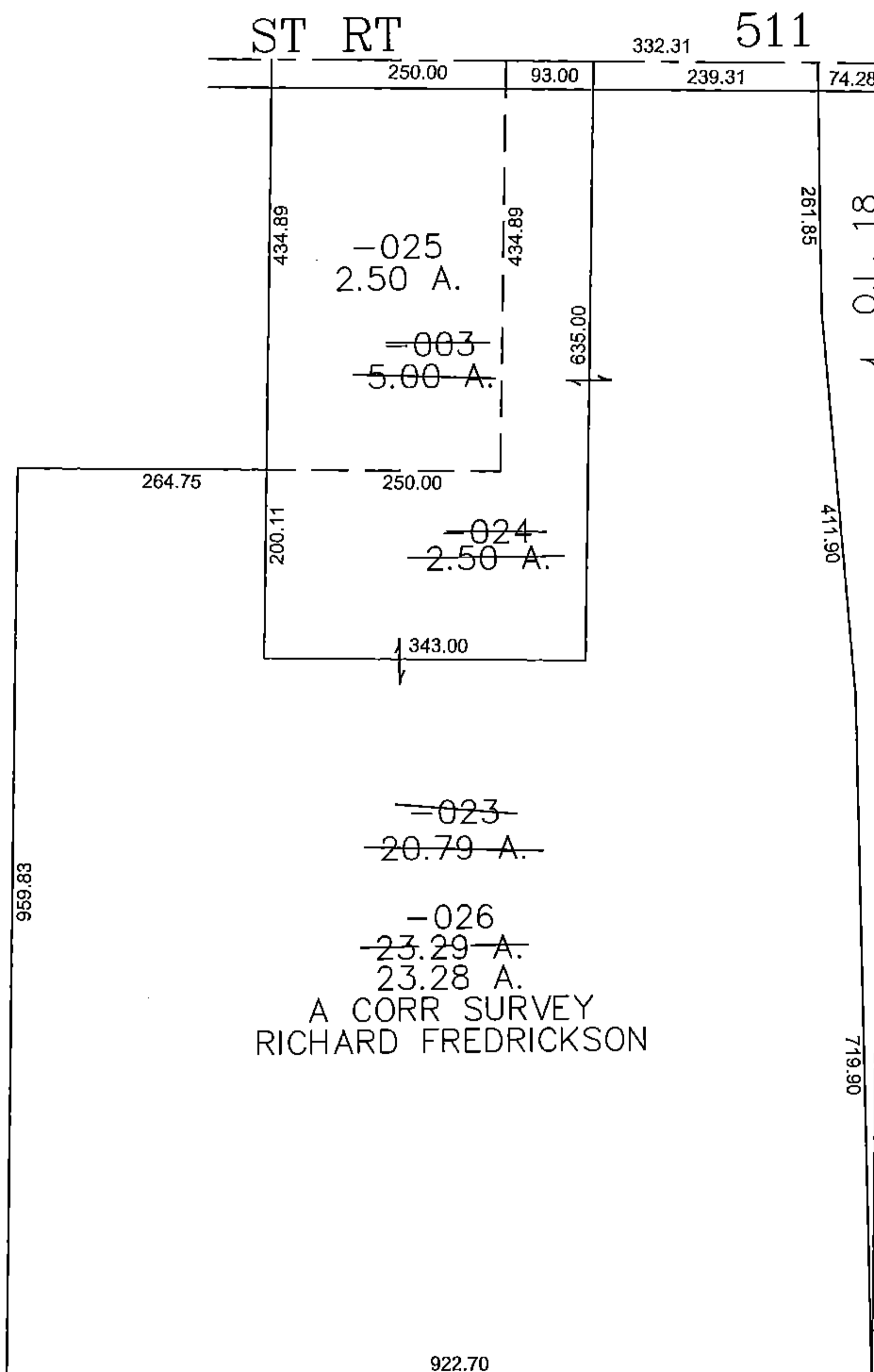
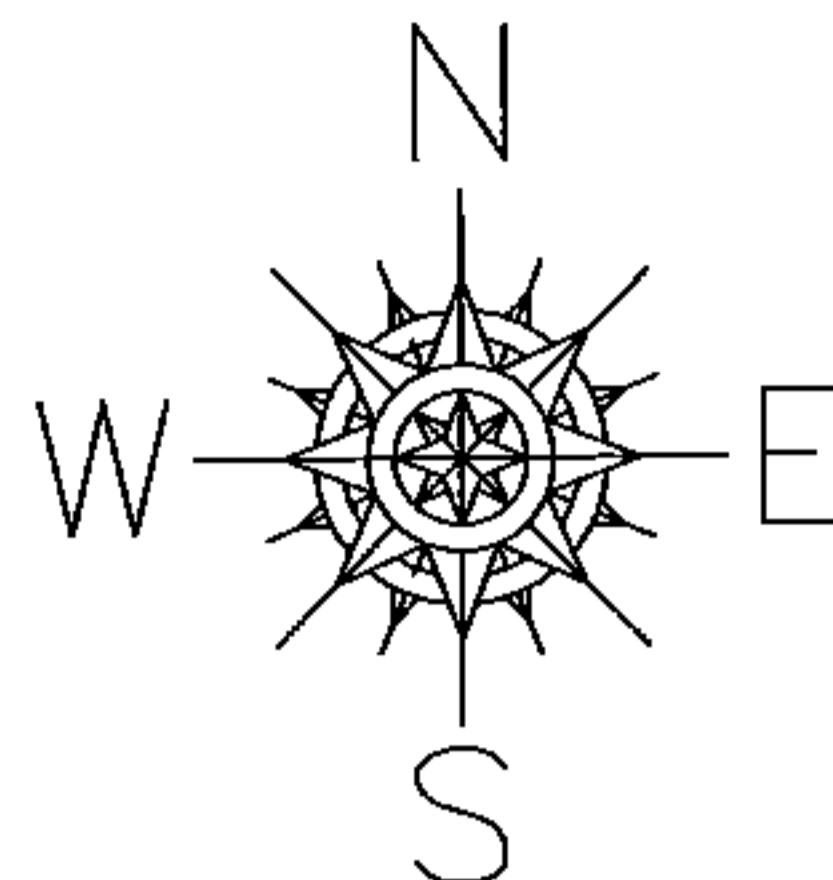


PARENT PARCEL: 08-12-018-000-003

CHILD PARCEL: 08-12-018-000-024, -025, -026

STARTING POINT: CENTERLINE OF ST RT 511 & O.L. 18

15-03439



SPLITS/DEEDS PROCESSED
 LORAIN COUNTY TAX MAP DEPARTMENT
 226 MIDDLE AVE. ELYRIA, OHIO

SURVEYED BY: RICHARD FREDRICKSON
 CLOSURE: 0.00 : 10.000
 MAP PAGE(S): 8-A
 APPROVED BY: JAH DATE: 11/6/2015
 SCALE: 1" = 200' PRIOR INSTRUMENT: 20120402962