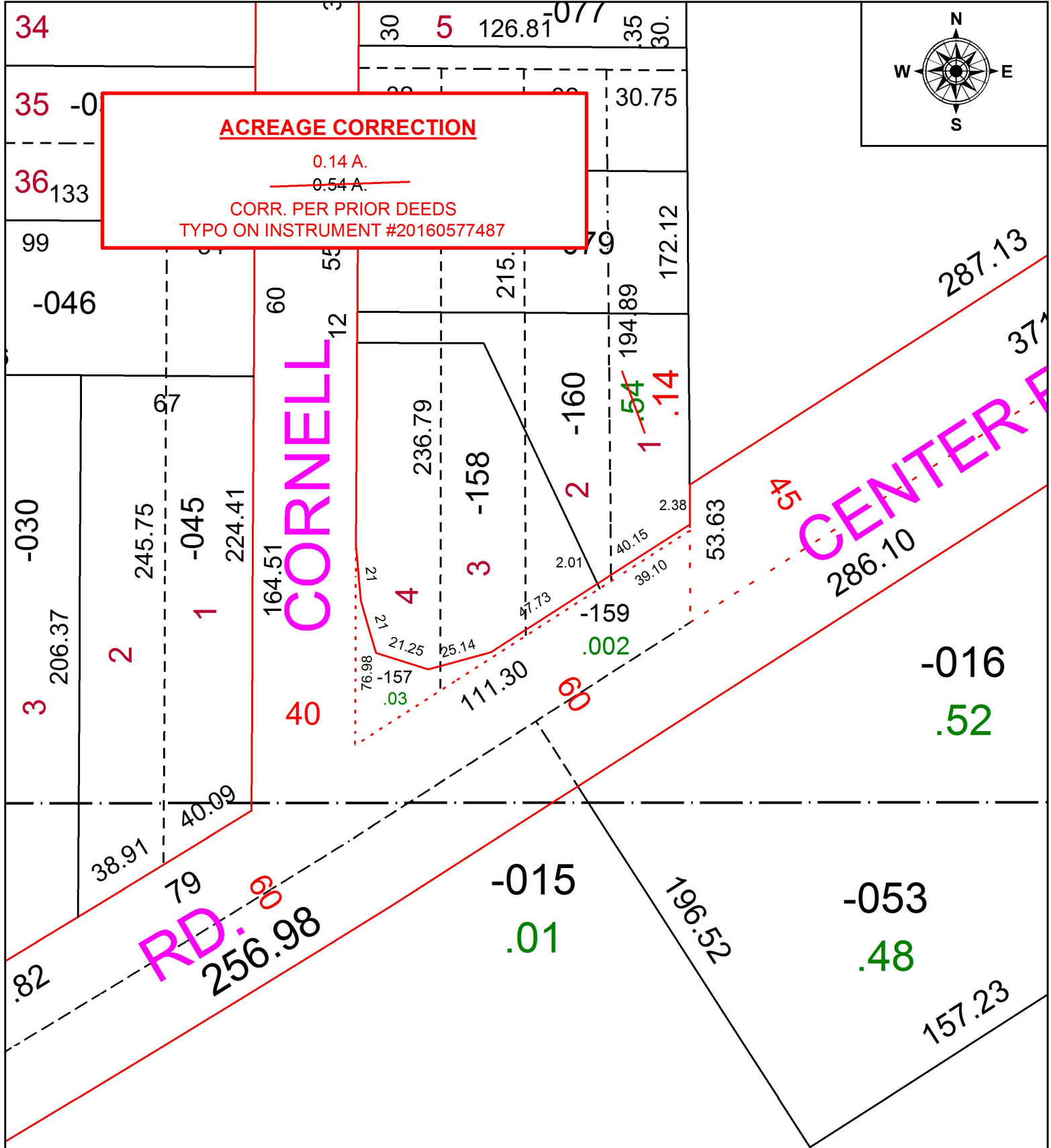
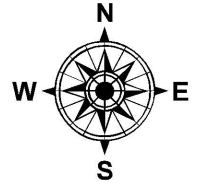


PARENT PARCEL: 07-00-017-128-160  
CHILD PARCEL: XX-XX-XXX-XXX-XXX  
STARTING POINT:

16-03439-A

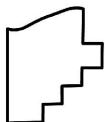


**ACREAGE CORRECTION**  
0.14 A.  
~~0.54 A.~~  
CORR. PER PRIOR DEEDS  
TYPO ON INSTRUMENT #20160577487

CORNELL

CENTER RD.

RD.



**SPLITS/DEEDS PROCESSED**  
LORAIN COUNTY TAX MAP DEPARTMENT  
226 MIDDLE AVE. ELYRIA, OH

SURVEYED BY: N/A  
CLOSURE: N/A  
MAP PAGE(S): 7-00-017-D  
APPROVED BY: RRM DATE: 4-29-16  
SCALE: 1" = 50 PRIOR INSTRUMENT: 19990643849