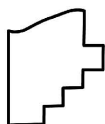
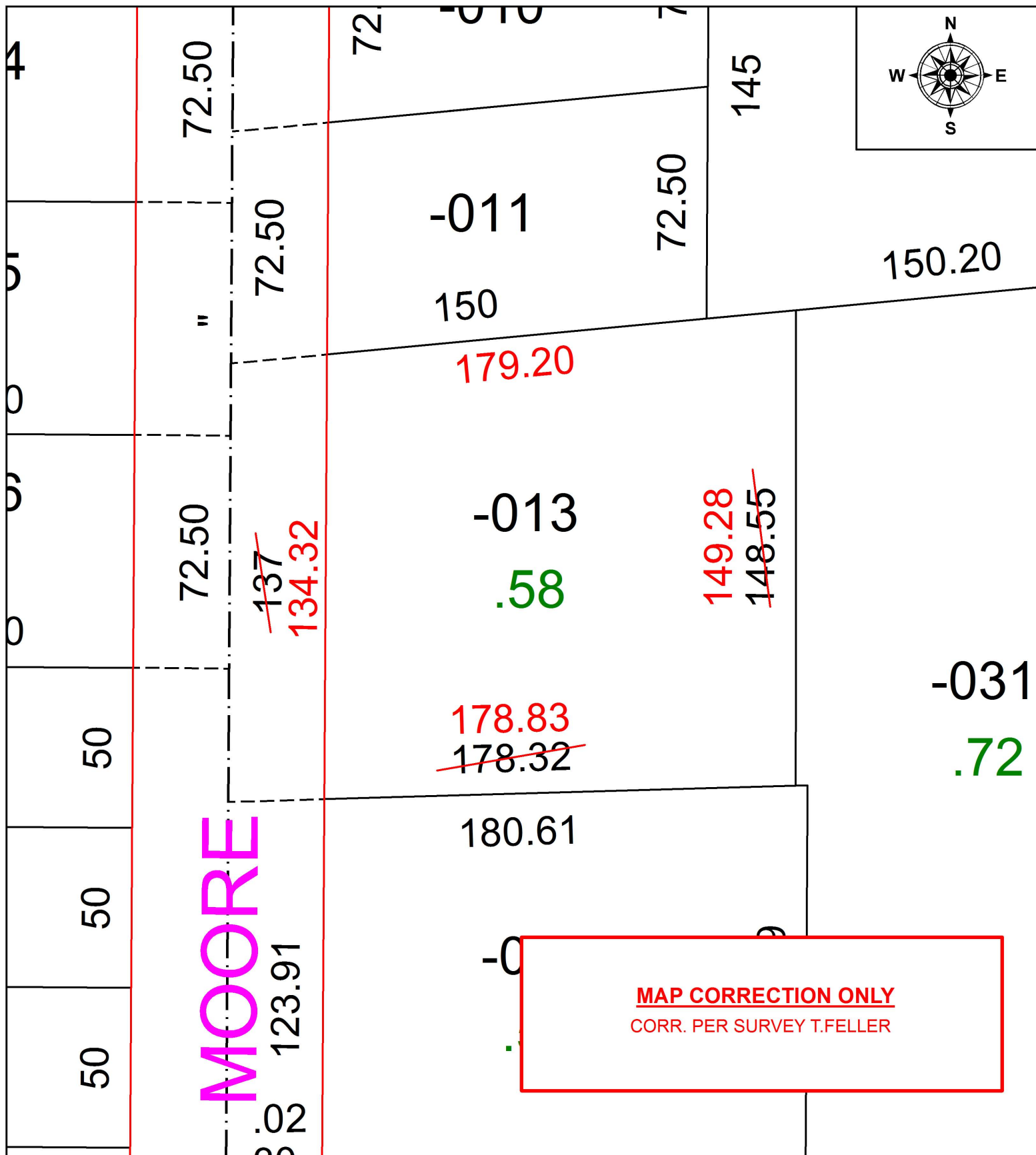


PARENT PARCEL: 04-00-007-111-013

CHILD PARCEL: XX-XX-XXX-XXX-XXX

STARTING POINT: INTERSECTION OF C/L OF MOORE RD. AND SOUTH LINE OF BEACH PARK ALLOT.

16-03436-X



SPLITS/DEEDS PROCESSED
LORAIN COUNTY TAX MAP DEPARTMENT
226 MIDDLE AVE. ELYRIA, OH

SURVEYED BY:	TIMOTHY J. FELLER
CLOSURE:	1: 258,368
MAP PAGE(S):	4-00-007
APPROVED BY:	RRM DATE: 4-27-16
SCALE:	1" = 40' PRIOR INSTRUMENT: 20150568513